

SAW Filter 400MHz
Part No: MP02987

Model: TC0523A
Rev No: 1

A. FEATURES:

1-Port Resonator

B. MAXIMUM RATING:

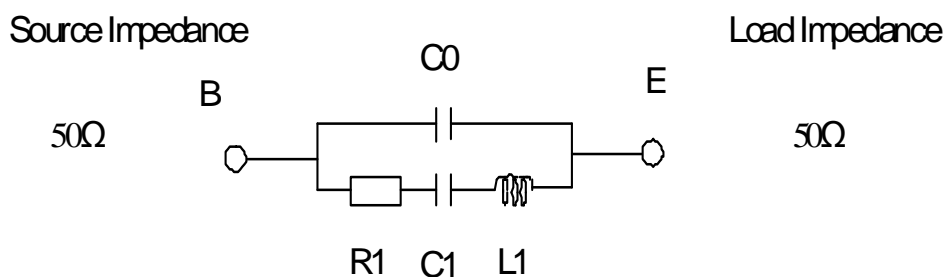
1. Input Power Level: 10dBm
2. DC voltage: 5V
3. Operating Temperature: -40°C to +85°C
4. Storage Temperature: -40°C to +85°C

C. ELECTRICAL CHARACTERISTICS:

Characteristic	Units	Min.	Typ.	Max.
Center frequency Fc	MHz	399.925	400	400.075
Insertion Loss IL	dB	-	0.9	2.0
Equivalent Elements				
Motional capacitance C1	fF	-	3.9	-
Motional inductance L1	μH	-	40.5	-
Motional resistance R1	Ω	-	11.2	-
Parallel capacitance Co	pF	-	5.3	-
Temp.coeff.	ppm/c*2	-	0.032	-
Turnover To	deg.C	-	25	-
Package size		SMD 3.0 X 3.0 X 1.4mm		

D. EQUIVILENT CIRCUIT:

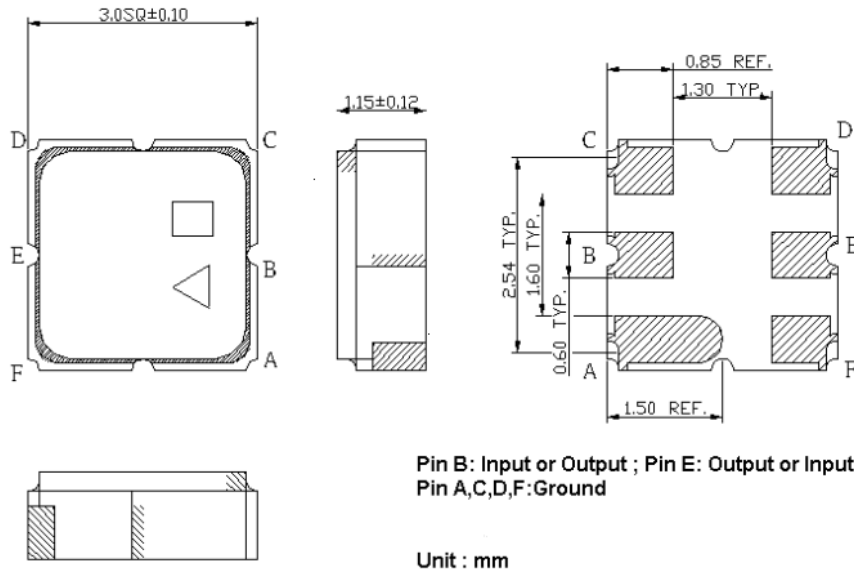
1-Port Resonator



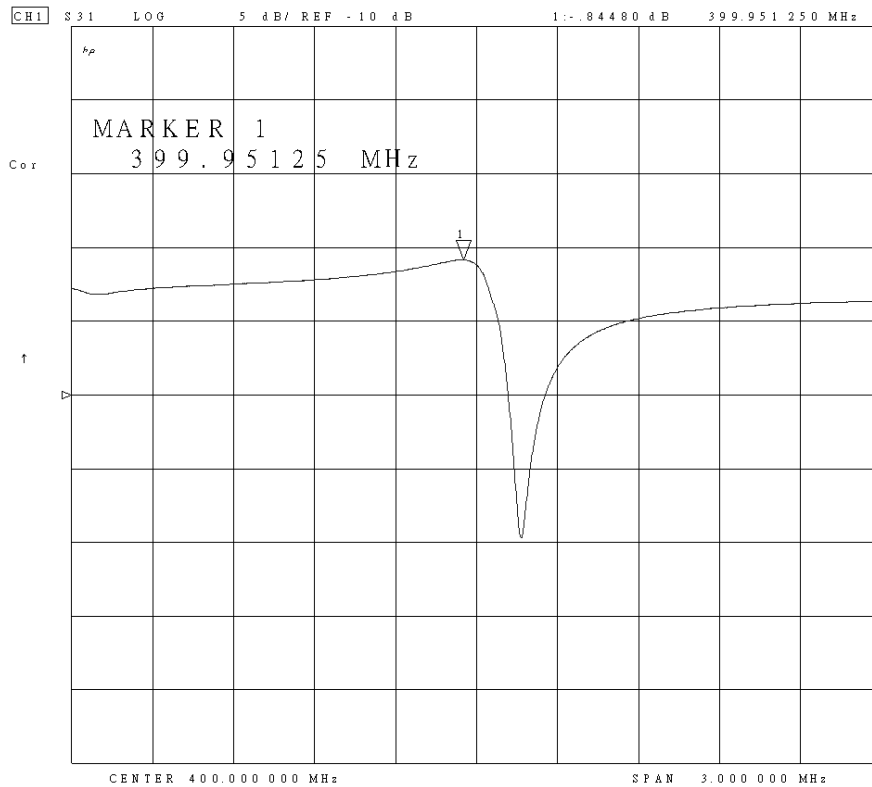
SAW Filter 400MHz
Part No: MP02987

Model: TC0523A
Rev No: 1

E. OUTLINE DRAWING:



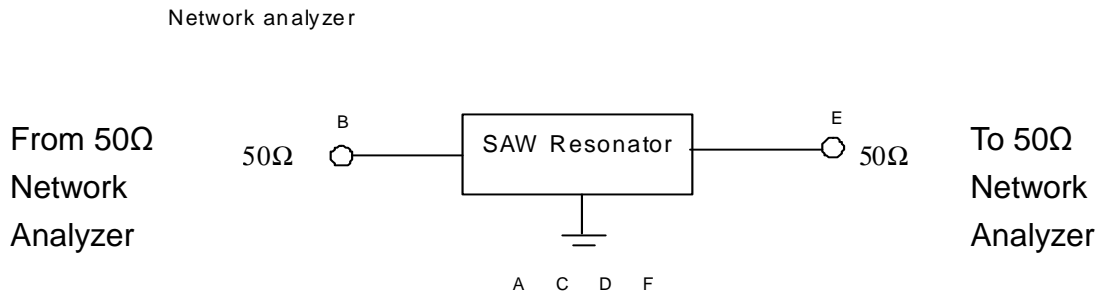
F. FREQUENCY CHARACTERISTICS:



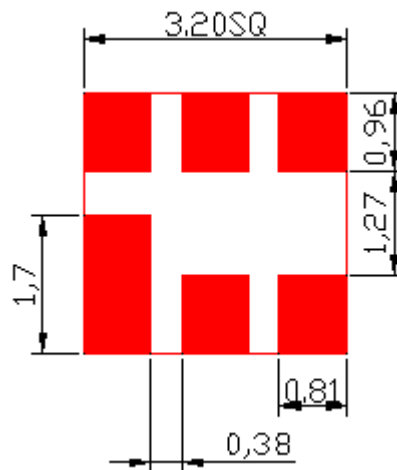
SAW Filter 400MHz
Part No: MP02987

Model: TC0523A
Rev No: 1

G. TEST CIRCUIT:



H. LAND PATTERN:

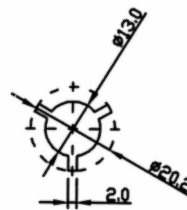
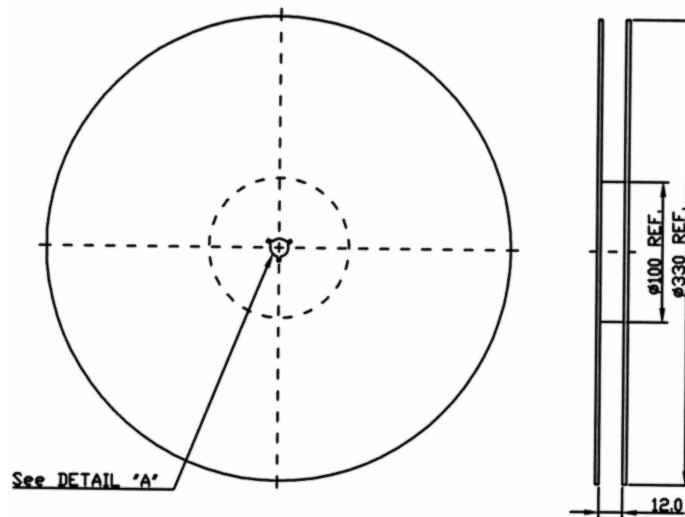


SAW Filter 400MHz
Part No: MP02987

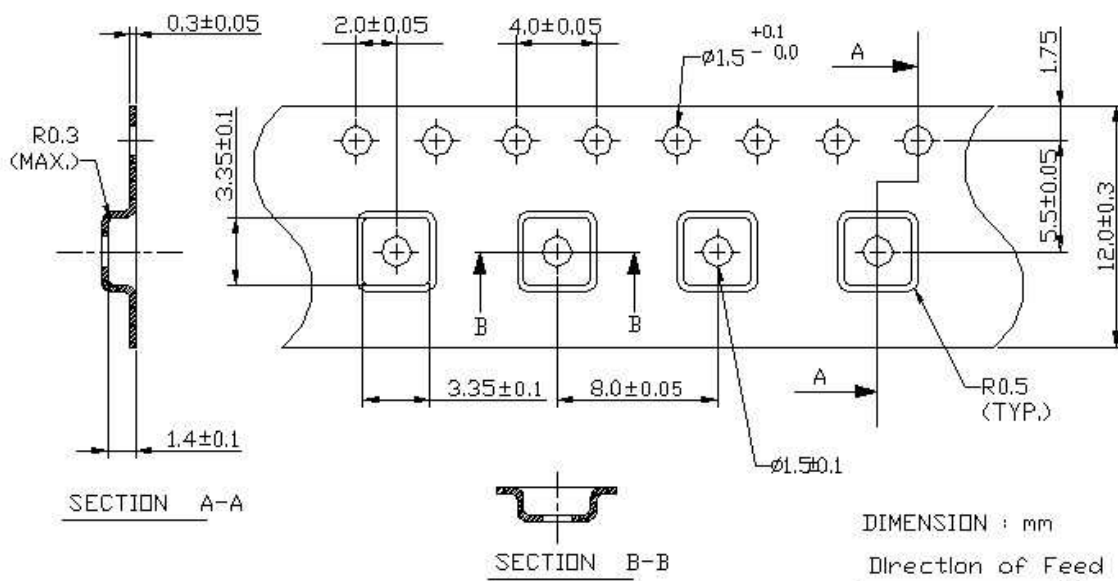
Model: TC0523A
Rev No: 1

I. PACKING:

1. REEL DIMENSION



2. TAPE DIMENSION



SAW Filter 400MHz
Part No: MP02987

Model: TC0523A
Rev No: 1

J. RECOMMENDED REFLOW PROFILE:

