

**SAW Filter 64.80MHz**

**Model: TB0395A**

**Part No: MP02669**

**REV. NO.: 2**

**A. MAXIMUM RATING:**

1. Operating Temperature: -30 °C ~ +60 °C
2. Storage Temperature: -40 °C ~ +85 °C
3. Input Power Level: 10dBm

**B. CHARACTERISTICS:**

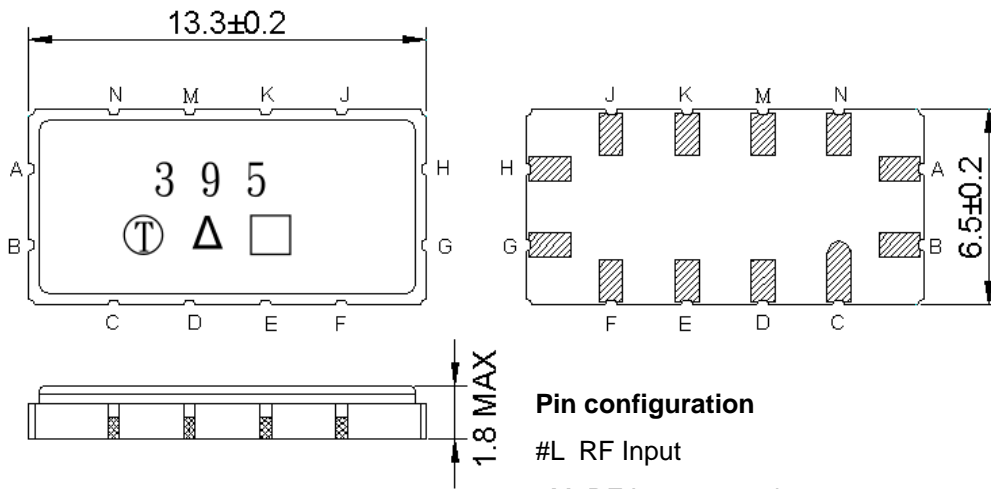
1. Ambient Temperature: 25°C

Characteristics	Value			Note.
	Min.		Max.	
Center frequency $F_c$ MHz	-	64.8	-	-
Maximum Insertion loss I.L. dB	-	8.41	13.0	-
1dB Bandwidth MHz	8.40	9.27	-	-
3dB Bandwidth MHz	9.00	10.25	-	-
35dB Bandwidth MHz	-	13.08	14.00	-
Passband Ripple ( $F_c \pm 4.2\text{MHz}$ ) MHz	-	0.66	1.00	-
Group Delay Ripple ( $F_c \pm 4.2\text{MHz}$ ) nS	-	120	-	-
Group Delay at $F_c$ uS	-	0.90	1.00	-
Phase linearity at any 200kHz B P-P Deg	-	2.0	5.0	-
Temp Coefficient ppm/°C	-	-94	-	-
Attenuation:( Reference level from minimum insertion loss)				
1) 10 ~ 57 MHz dB	30	36	-	-
2) 57.6 MHz dB	35	40	-	-
2) 73 ~ 90 MHz dB	30	34	-	-
2) 90 ~ 100 MHz dB	40	49	-	-
2) 100 ~ 140 MHz dB	40	49	-	-

**C. OUTLINE DRAWING:**

**SAW Filter 64.80MHz**  
**Part No: MP02669**

**Model: TB0395A**  
**REV. NO.: 2**



**Pin configuration**

- #L RF Input
  - #M RF Input ground
  - #E RF Output
  - #F RF Output ground
  - #A,B,C,D,G,H,J,K To be ground
- Unit : mm

**SAW Filter 64.80MHz**  
**Part No: MP02669**

**Model: TB0395A**  
**REV. NO.: 2**

**D. FREQUENCY CHARACTERISTICS:**

**1. S21 Response**

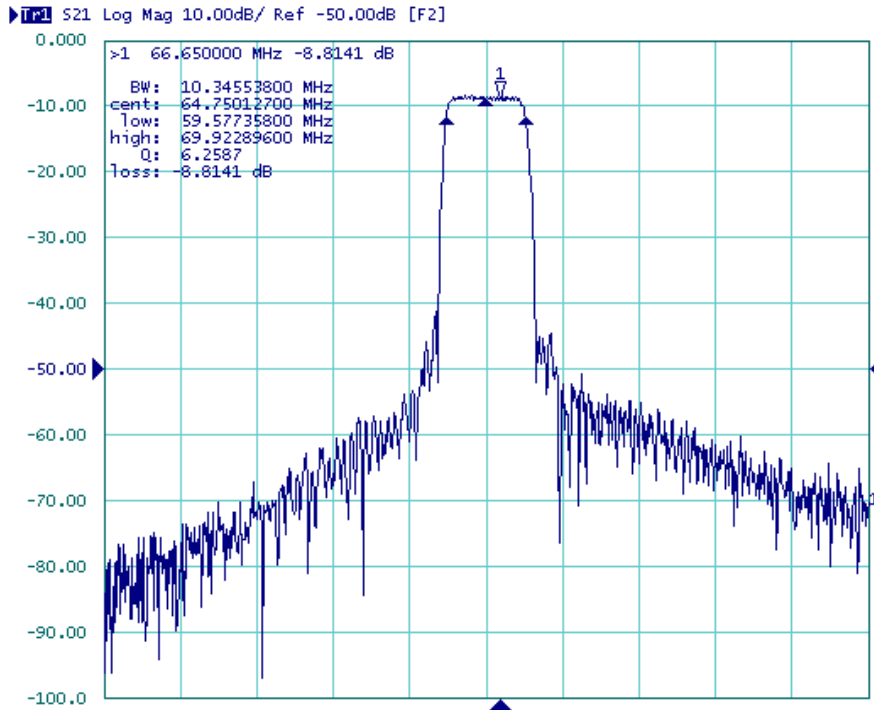


Fig1. Horizontal: 100MHz/Div Vertical: 10dB/Div

**2. Pass band Ripple and Group Delay Ripple**

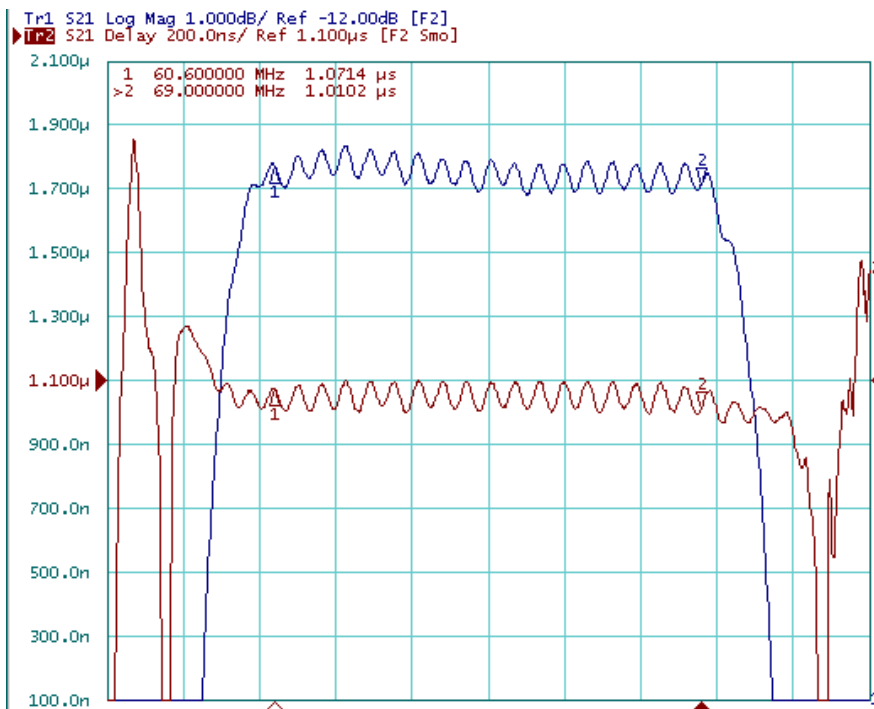
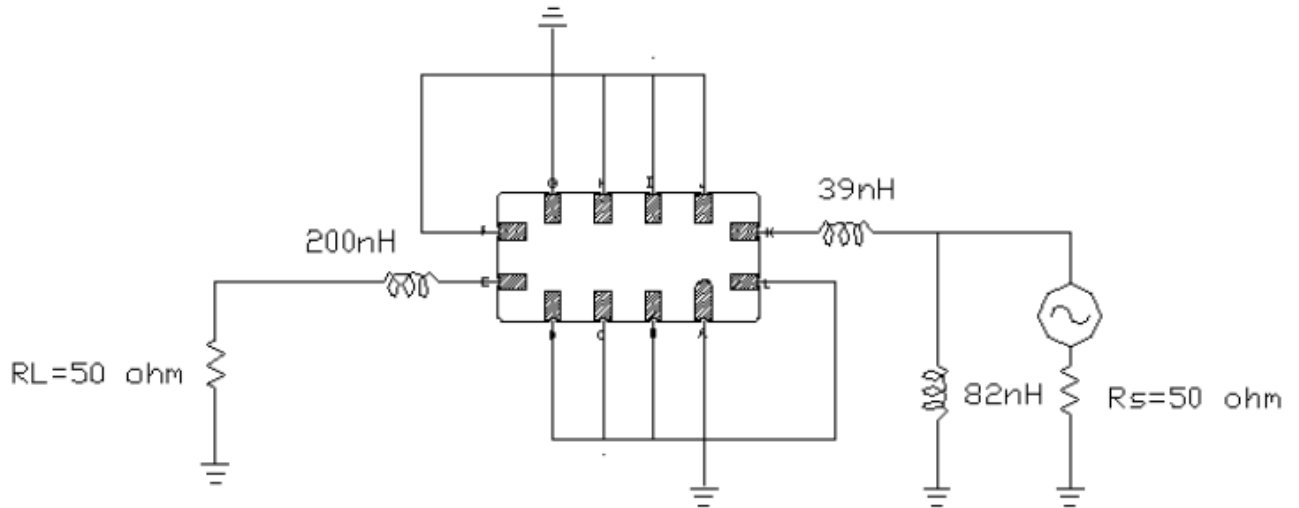


Fig2. Horizontal: 1.5MHz/Div; Vertical: 1dB/Div. Vertical: 200nS/Div,

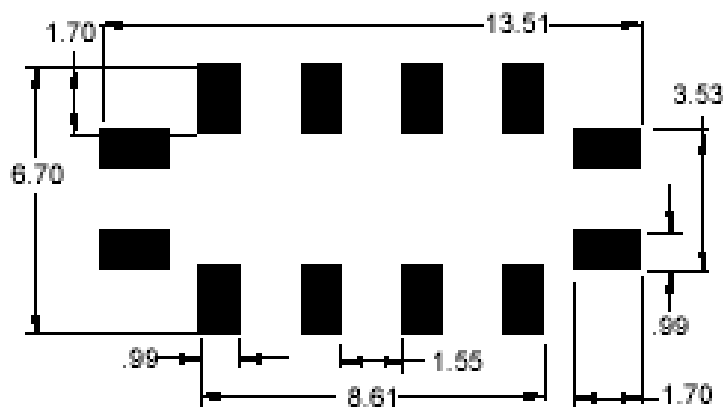
**SAW Filter 64.80MHz**  
**Part No: MP02669**

**Model: TB0395A**  
**REV. NO.: 2**

**E. TEST FIXTURE:**



**F. PCB FOOTPRINT:**



**SAW Filter 64.80MHz**

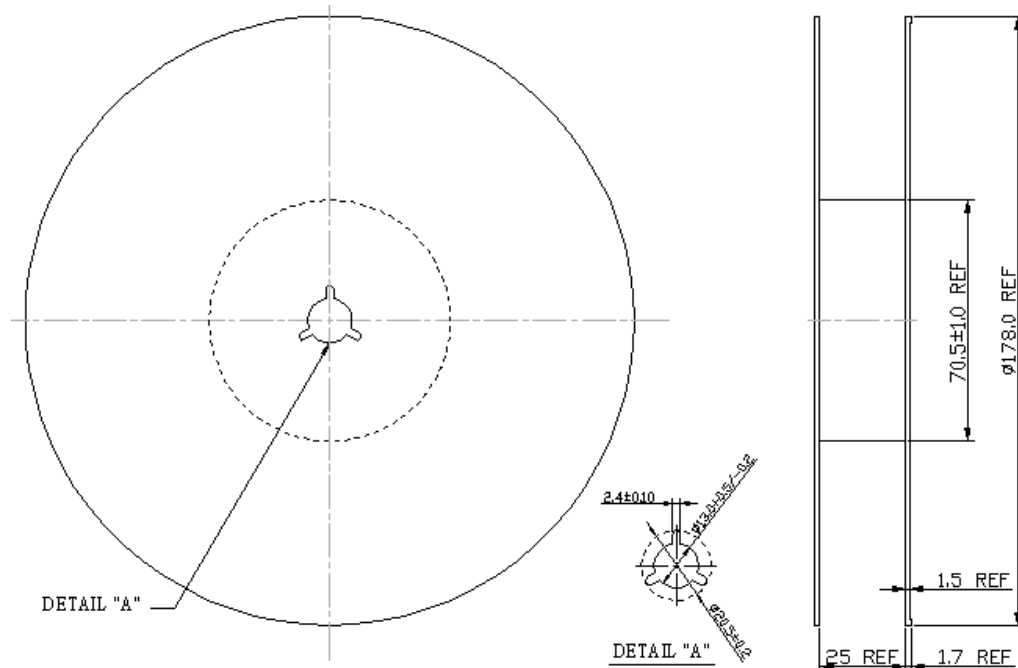
**Model: TB0395A**

**Part No: MP02669**

**REV. NO.: 2**

**G. PACKING:**

**1. REEL DIMENSION**



**2. TAPE DIMENSION**

