

---

**SAW Filter 61.380MHz**

**Model: TB0728A**

**Part No: MP02237**

**REV NO.: 1**

---

**A. MAXIMUM RATING:**

1. Input Power Level: 10 dBm
2. Operating Temperature: -20°C to +80°C
3. Storage Temperature: -40°C to +85°C

**B. CHARACTERISTICS:**

Ambient Temperature: 25 °C

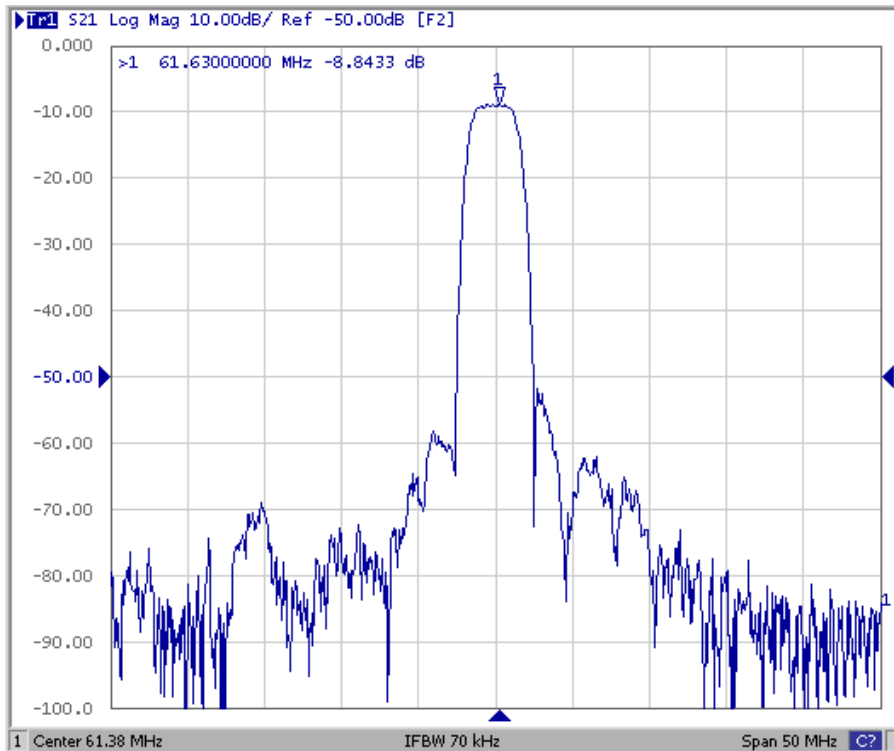
Item	Unit	Min.	Typ.	Max.
Center frequency, Fc	MHz	-	61.38	-
Insertion Loss, IL	dB	-	8.8	10.0
-1 dB Bandwidth	MHz	1.8	2.53	-
-3 dB Bandwidth	MHz	2.8	2.98	-
-40 dB Bandwidth	MHz	-	4.92	5.2
Amplitude Ripple Fc±0.75MHz	dB	-	0.5	1.0
Group-delay Ripple Fc±0.75MHz	dB	-	110	150
Relative Attenuation 1.0 ~ 57.38MHz	dB	45	52	-
Relative Attenuation 65.38 ~150MHz	dB	45	48	-
Temp Coefficient	ppm/K	-23		

**SAW Filter 61.380MHz**  
**Part No: MP02237**

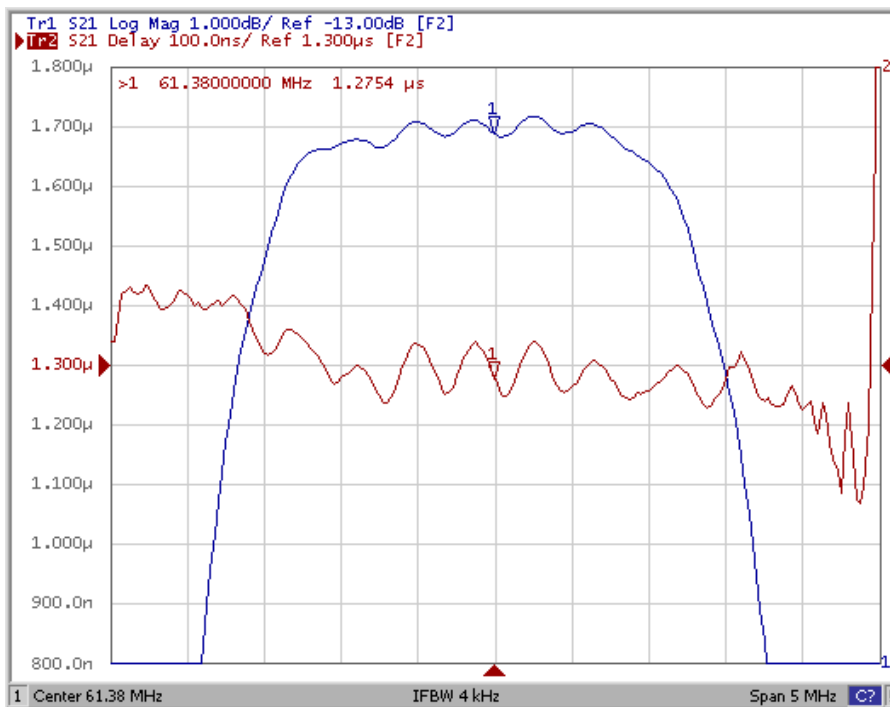
**Model: TB0728A**  
**REV NO.: 1**

**C. FREQUENCY CHARACTERISTICS:**

(1) wide band Response:(span 50MHz)



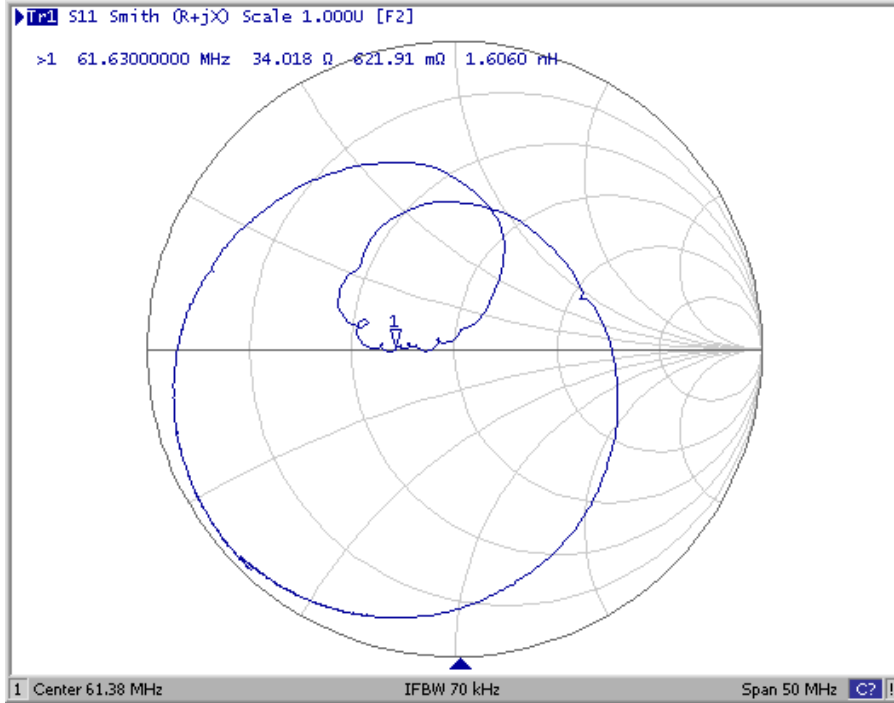
(2) Pass band Response and Group Delay Variation: (span 5MHz)



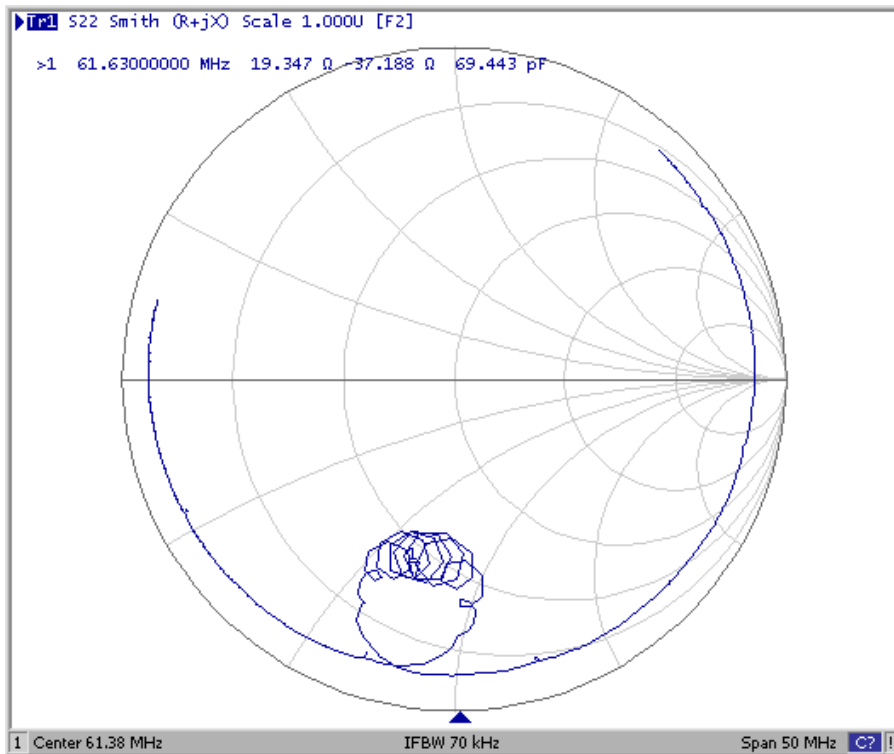
**SAW Filter 61.380MHz**  
**Part No: MP02237**

**Model: TB0728A**  
**REV NO.: 1**

(3) S11 Smith-Chart: (span 50MHz)



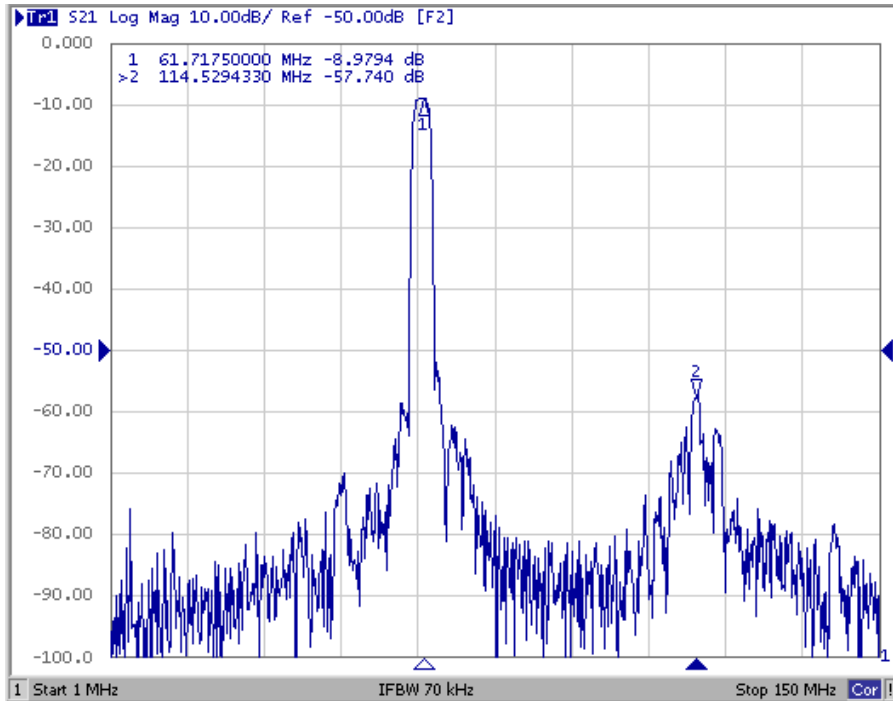
(4) S22 Smith-Chart: (span 50MHz)



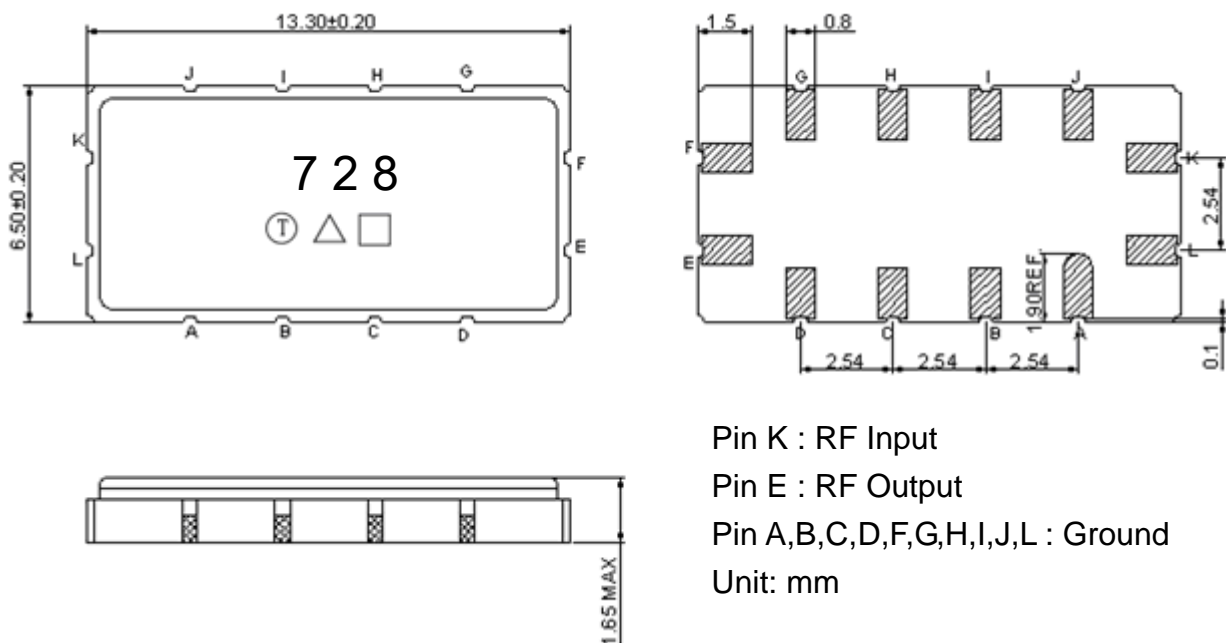
**SAW Filter 61.380MHz**  
**Part No: MP02237**

**Model: TB0728A**  
**REV NO.: 1**

(5) wide band Response:(span 150MHz)



**D. OUTLINE DRAWING:**



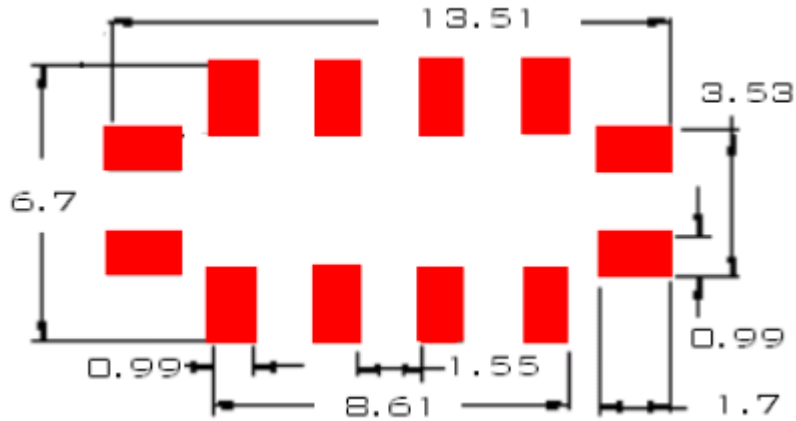
**SAW Filter 61.380MHz**

**Model: TB0728A**

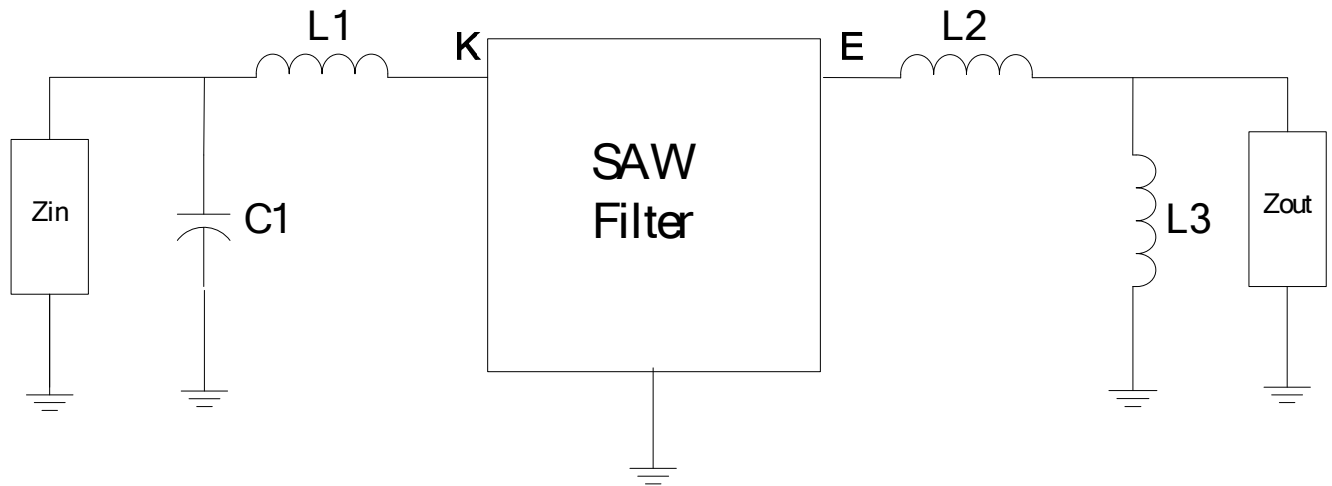
**Part No: MP02237**

**REV NO.: 1**

**E. PCB FOOTPRINT:**



**F. MATCHING CIRCUIT:**



$Z_{in} = Z_{out} = 50 \text{ ohm}$   
 $L1 = 180\text{nH}, C1 = 110\text{pF}, L2 = 82\text{nH}, L3 = 220\text{nH}$



**SAW Filter 61.380MHz**

**Model: TB0728A**

**Part No: MP02237**

**REV NO.: 1**

**H. RECOMMENDED REFLOW PROFILE:**

