
IF SAW Filter: 70MHz (BW = 9MHz) SMD 13.3 X 6.5mm Model: TB0740A
Part No: MP01787 Rev No: 1

A. MAXIMUM RATING:

1. Operating Temperature: -20°C ~ +80°C
2. Storage Temperature: -40°C ~ +85°C
3. Input power: 10dBm

B. CHARACTERISTICS:

Ambient Temperature: 25°C

Characteristics	Value			Note
	Min.	Typ.	Max.	
Center frequency Fc MHz	69.8	70.0	70.2	
Minimum Insertion loss IL dB	-	10.6	12.0	
1dB BW MHz	9.0	9.7	-	
3dB BW MHz	9.5	10	-	
35dB BW MHz	-	11.7	13.0	
Passband Ripple (Fc ± 4MHz) dB	-	0.6	1.0	
Group-Delay Ripple (Fc ± 4MHz) nsec	-	80	160	
Attenuation (Reference to Minimum Insertion loss)				
10 ~ 63MHz dB	40	45	-	
78 ~ 140MHz dB	40	45	-	
Temp Coefficient ppm/K	-	-94	-	-
Matching: 1. The input of the filter will be matched to 50Ω 2. The output of the filter will be matched to 50Ω				

IF SAW Filter: 70MHz (BW = 9MHz) SMD 13.3 X 6.5mm
Part No: MP01787

Model: TB0740A
Rev No: 1

C. FREQUENCY CHARACTERISTICS:

1. S21 Response: (span: 50MHz)

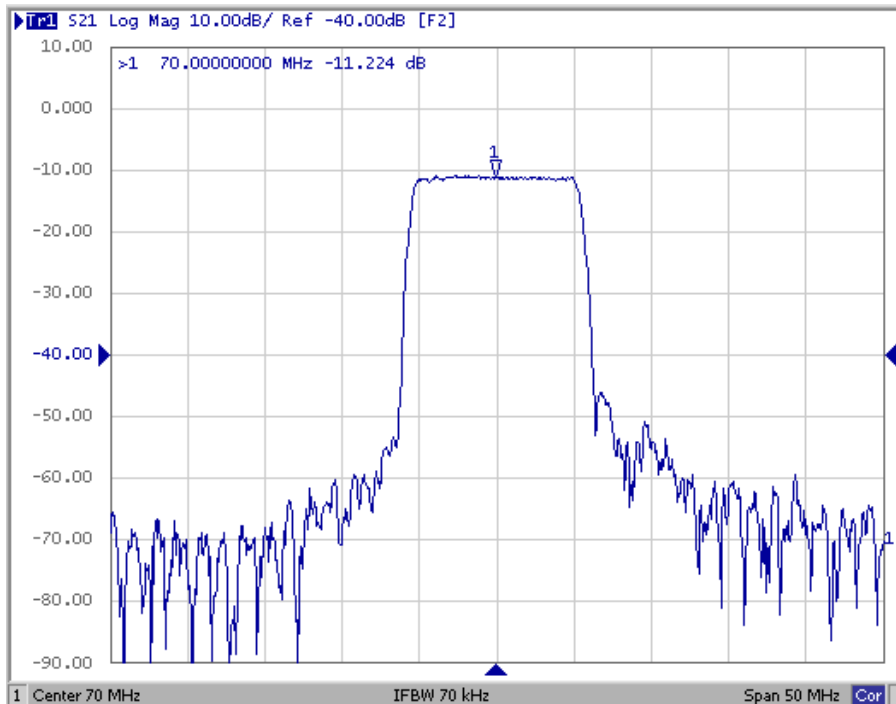


Fig1. Horizontal: 5MHz/Div Vertical: 10dB/Div

2. Group-Delay Ripple: (span: 20MHz)

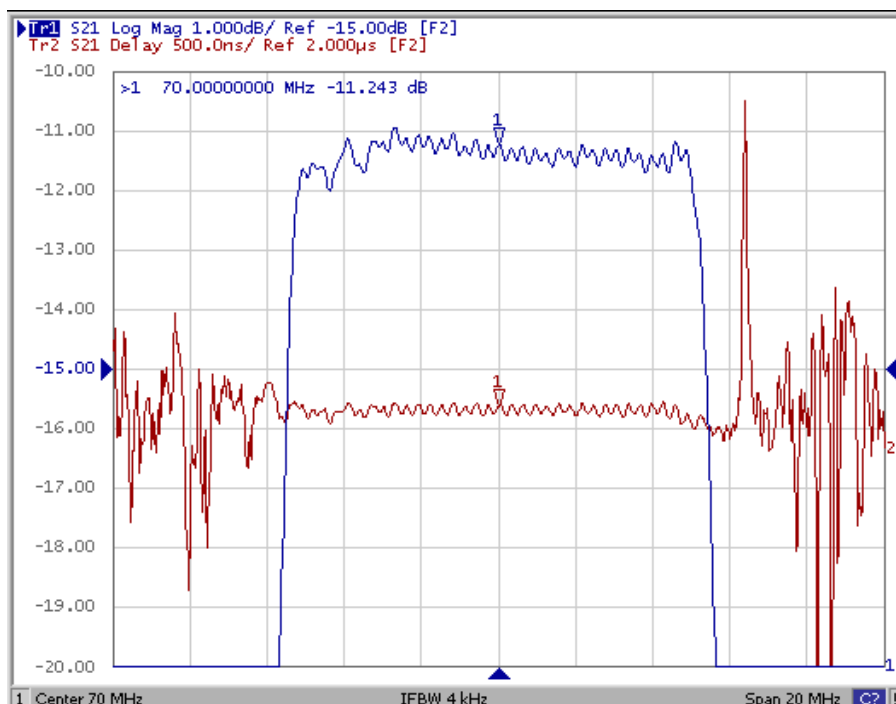
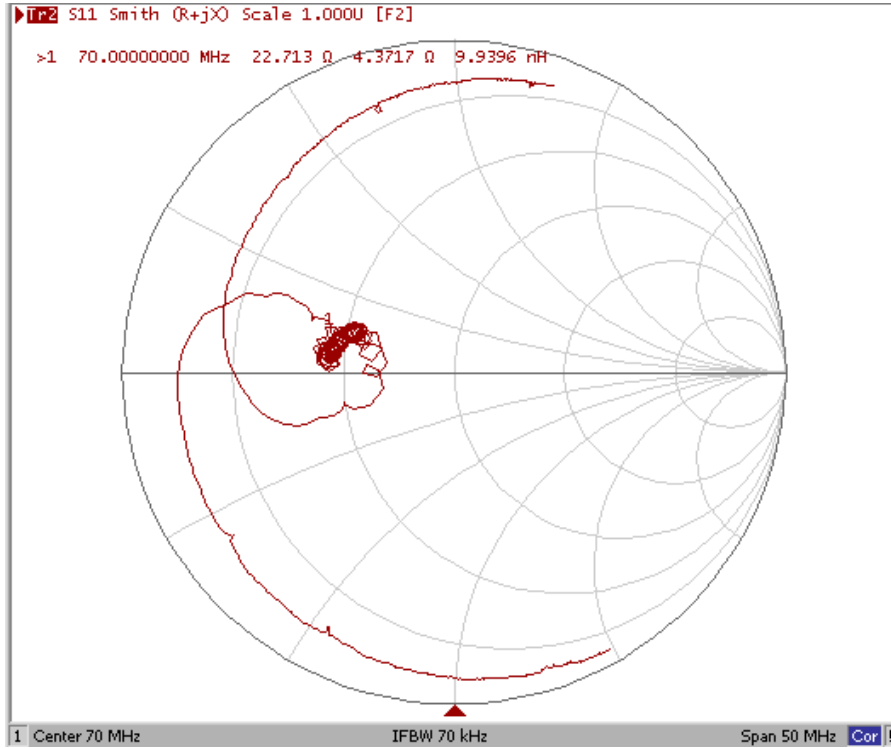


Fig2. Horizontal: 2MHz/Div Vertical: 500nec/Div

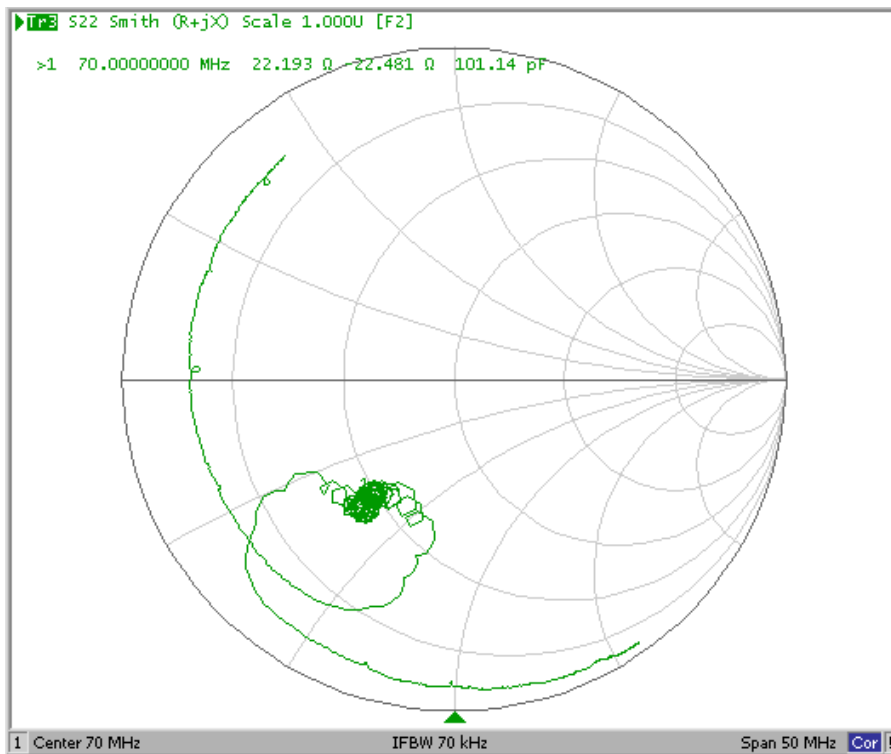
IF SAW Filter: 70MHz (BW = 9MHz) SMD 13.3 X 6.5mm
Part No: MP01787

Model: TB0740A
Rev No: 1

3. S11 Smith Chart: (span: 50MHz)



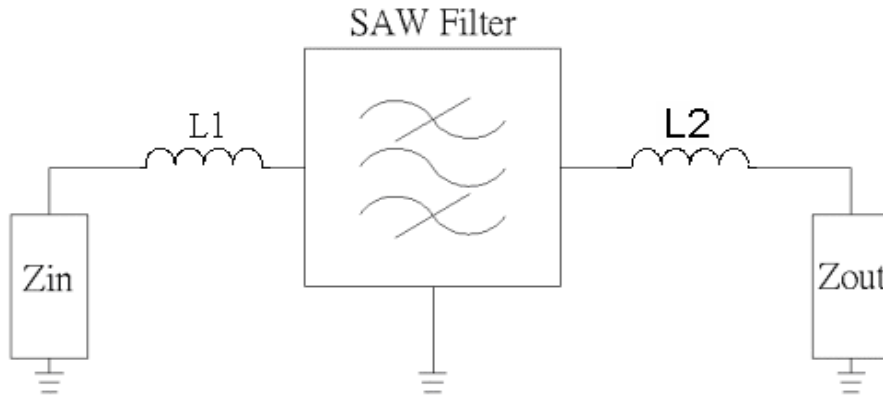
4. S22 Smith Chart (span: 50MHz)



IF SAW Filter: 70MHz (BW = 9MHz) SMD 13.3 X 6.5mm
Part No: MP01787

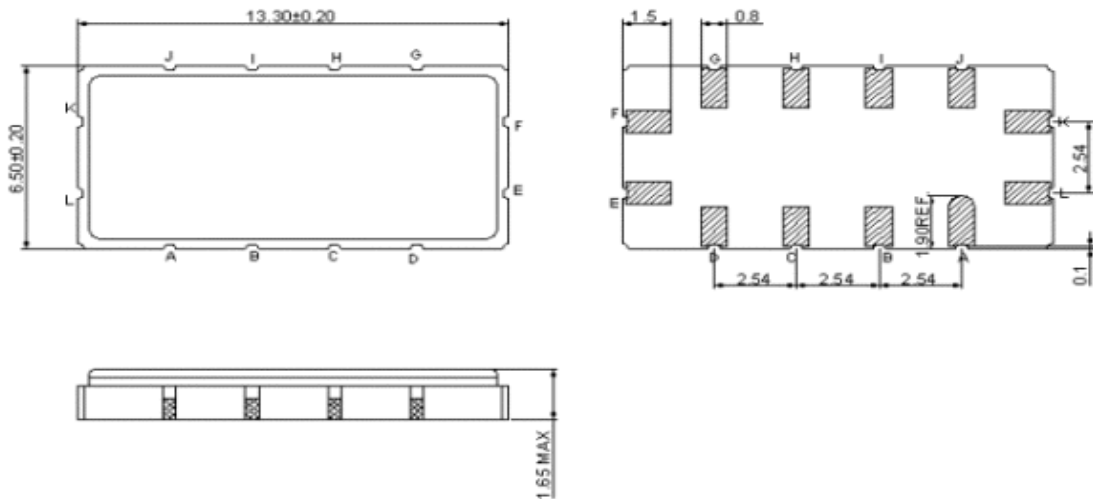
Model: TB0740A
Rev No: 1

D. MEASUREMENT CIRCUIT:



Z_{in} and Z_{out} are $50\ \Omega$.
 $L1 = 220\text{nH}$, $L2 = 150\text{nH}$

E. OUTLINE DRAWING:

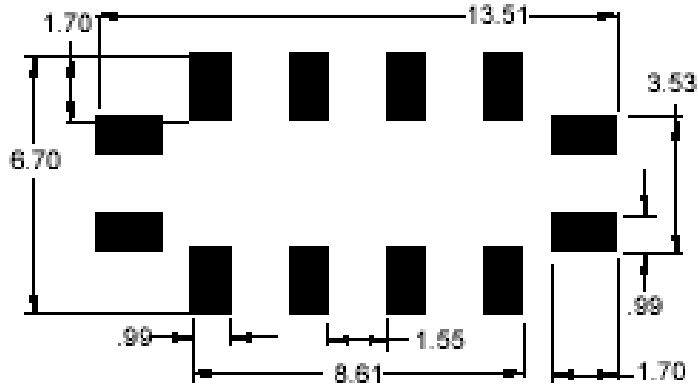


Pin K: RF input
 Pin E: RF output
 Pin A, B, C, D, G, H, I, L, F, J: To be Ground
 Unit: mm

IF SAW Filter: 70MHz (BW = 9MHz) SMD 13.3 X 6.5mm
Part No: MP01787

Model: TB0740A
Rev No: 1

F. PCB FOOTPRINT:

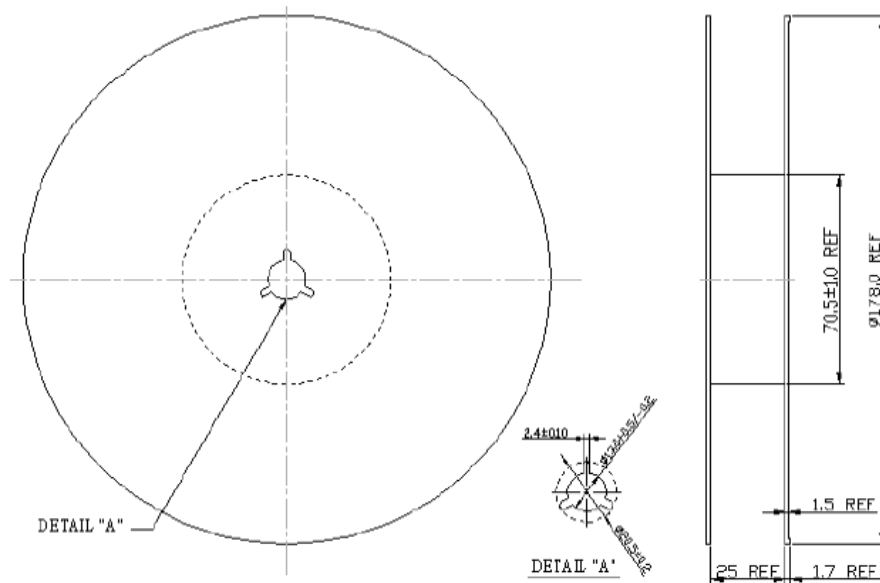


IF SAW Filter: 70MHz (BW = 9MHz) SMD 13.3 X 6.5mm
Part No: MP01787

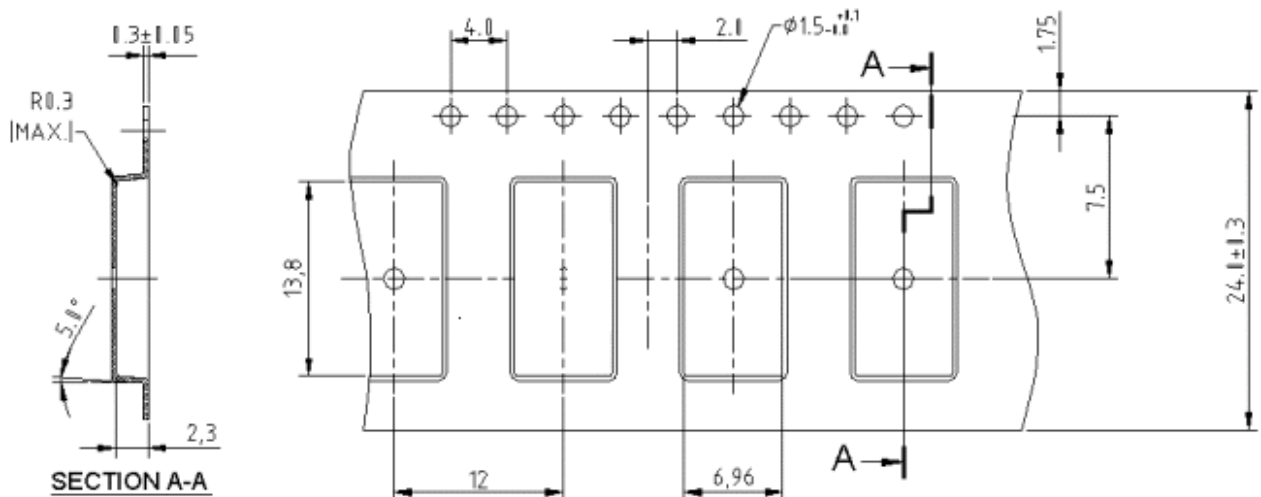
Model: TB0740A
Rev No: 1

G. PACKING:

1. REEL DIMENSION



2. TAPE DIMENSION



IF SAW Filter: 70MHz (BW = 9MHz) SMD 13.3 X 6.5mm
Part No: MP01787

Model: TB0740A
Rev No: 1

H. RECOMMENDED REFLOW PROFILE:

