

70.0MHz IF SAW Filter

Model: TB0460A

Part No: MA09580

REV NO.: 1

A. MAXIMUM RATING:

1. Operating Temperature: -30 °C ~ 80 °C
2. Storage Temperature: -40 °C ~ +85 °C
3. Input Power Level: 10dBm

B. CHARACTERISTICS :

1. Ambient Temperature: 25 °C

Characteristics	Value			Note
	Min.	Typ.	Max.	
Center frequency F_c MHz	69.8	70	70.2	-
Minimum Insertion loss I.L. dB	-	11	13	-
1 dB Bandwidth MHz	-	11.57	-	-
3 dB Bandwidth MHz	-	12.57	-	-
40 dB Bandwidth MHz	-	16.00	18.25	-
Passband Ripple ($F_c \pm 5\text{MHz}$) dB	-	0.46	1.00	-
Group Delay Ripple ($F_c \pm 5\text{MHz}$) nsec	-	30	90	-
Phase linearity ($F_c \pm 5\text{MHz}$) (p-p) deg	-	5	11	-
Attenuation:(Reference level from minimum insertion loss)				dB
2) $F_c \pm 15\text{ MHz} \dots F_c \pm 30\text{ MHz}$ dB	36	53	-	-
Temp Coefficient ppm/° C		-94	-	-

70.0MHz IF SAW Filter

Model: TB0460A

Part No: MA09580

REV NO.: 1

C. FREQUENCY CHARACTERISTICS :

1. S21 Response

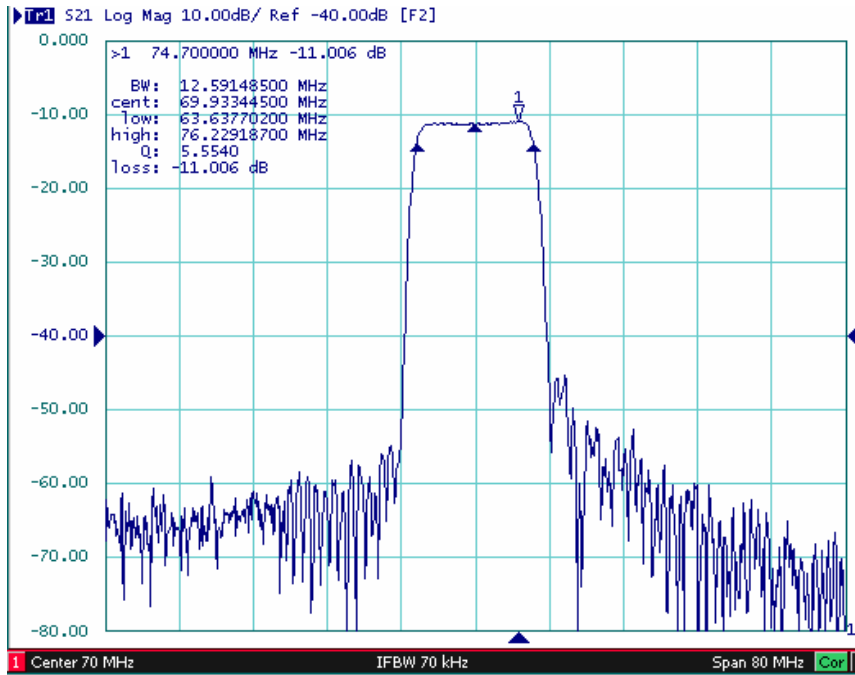


Fig.1 Horizontal : 8MHz/Div Vertical: 10dB/Div

2. Passband Ripple

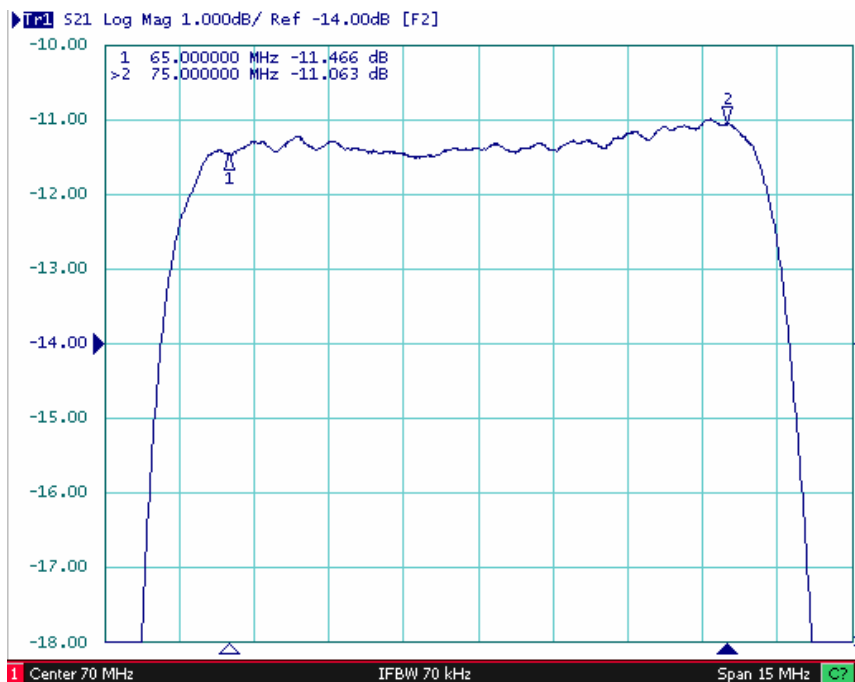


Fig.2 Horizontal : 1.5MHz/Div Vertical: 1dB/Div

70.0MHz IF SAW Filter
Part No: MA09580

Model: TB0460A
REV NO.: 1

3. Group Delay Ripple

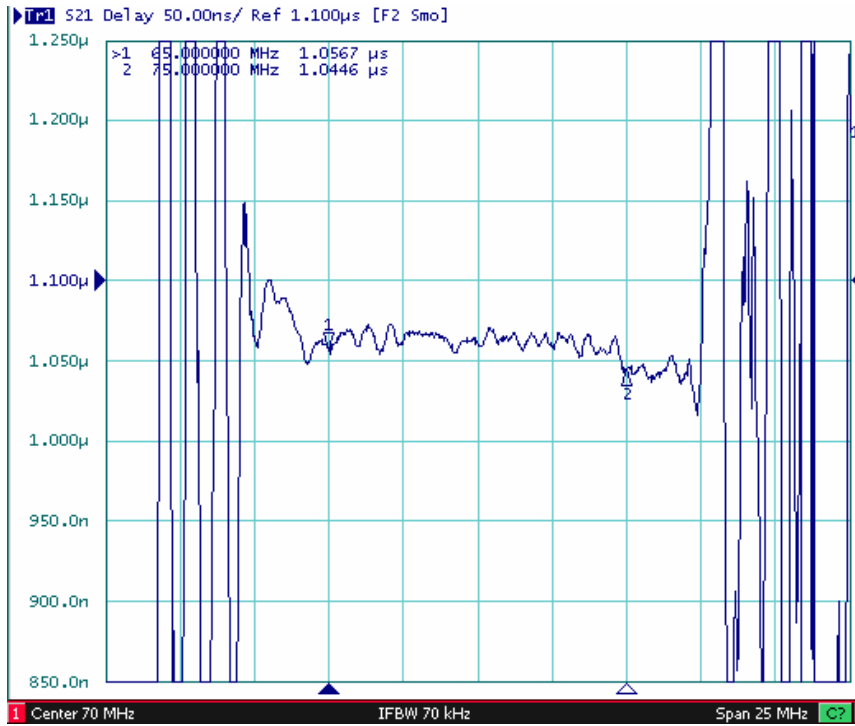


Fig.3 Horizontal : 2.5MHz/Div Vertical: 50 nS/Div

4. Phase linearity

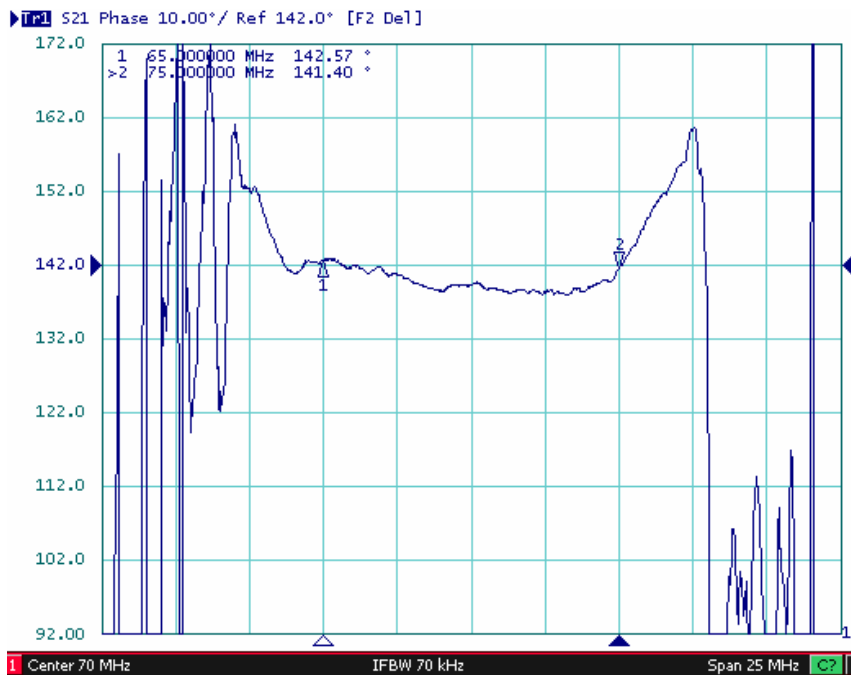


Fig.4 Horizontal : 2.5MHz/Div Vertical: 10 deg/Div

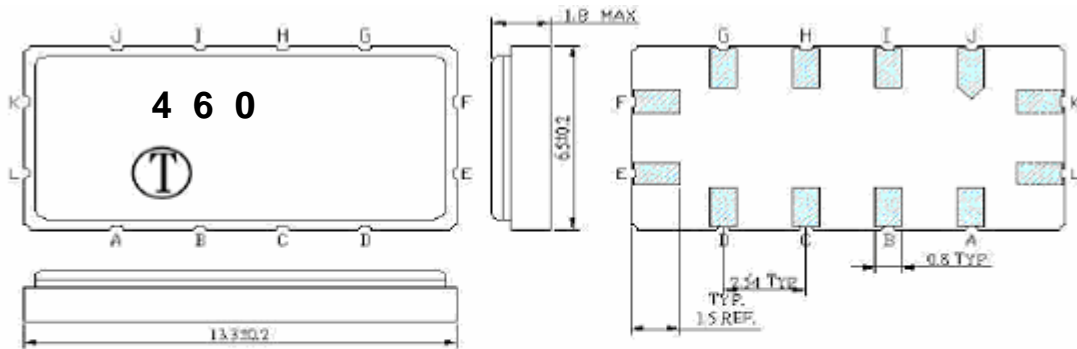
70.0MHz IF SAW Filter

Model: TB0460A

Part No: MA09580

REV NO.: 1

D. OUTLINE DRAWING:

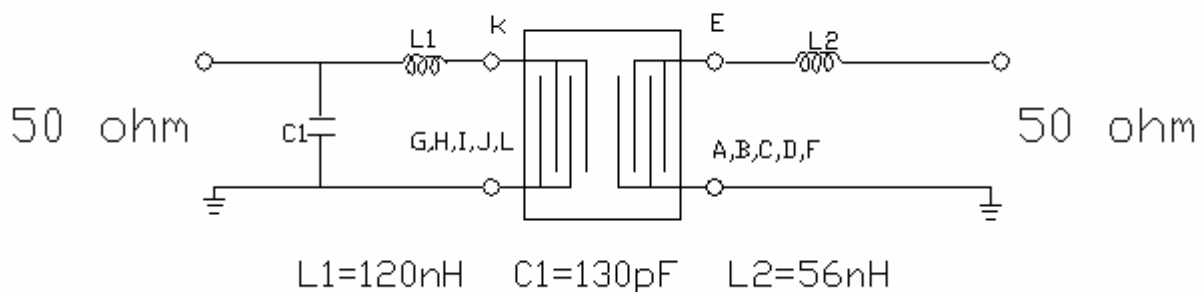


Unit: mm

Pin configuration

- #K RF Input
- #L RF Input ground
- #E RF Output
- #F RF Output ground
- #A,B,C,D,G,H,I,J To be ground

E. TEST FIXTURE:



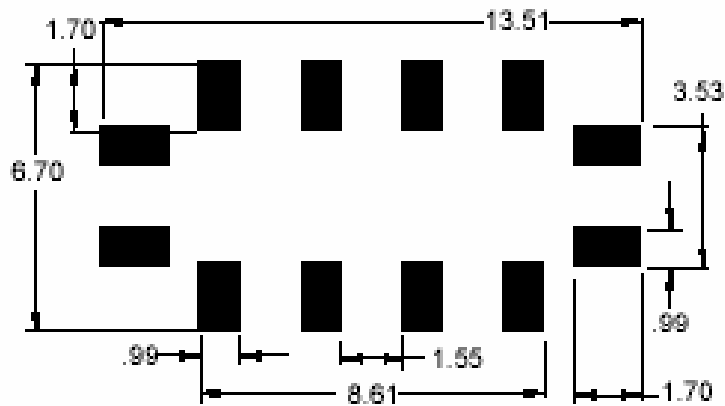
70.0MHz IF SAW Filter

Model: TB0460A

Part No: MA09580

REV NO.: 1

F. PCB FOOTPRINT



70.0MHz IF SAW Filter

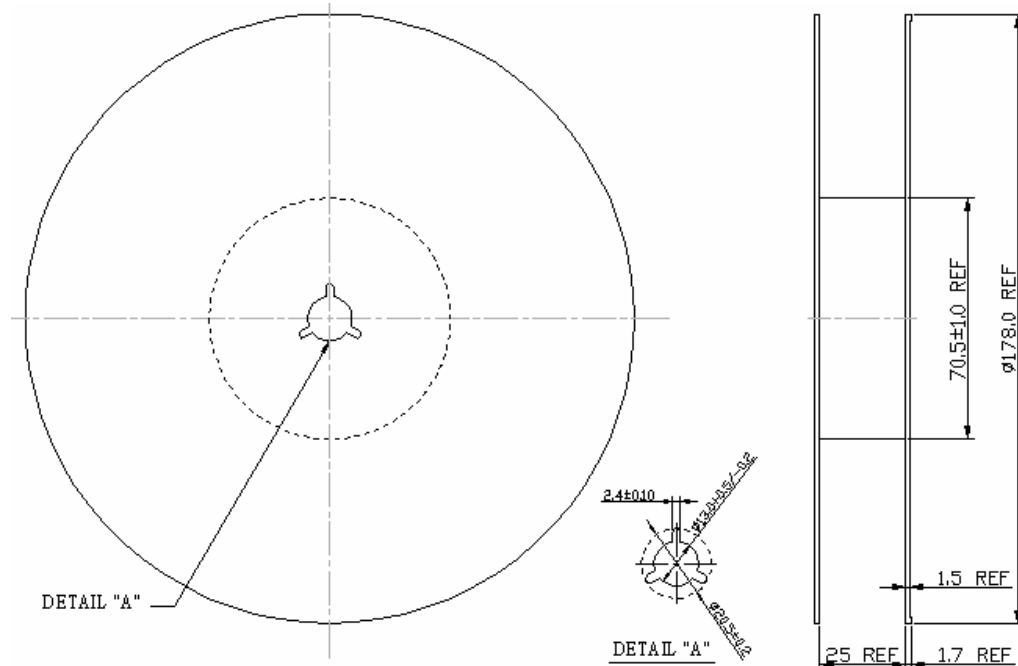
Model: TB0460A

Part No: MA09580

REV NO.: 1

G. PACKING:

1. REEL DIMENSION



2. TAPE DIMENSION

