

SAW Filter: 135.53MHz
Part No: MA09494

Model: TB0557A
Rev No: 1

A. MAXIMUM RATING:

1. Input Power Level: 10dBm
2. DC Voltage: 5V
3. Operating Temperature: -20°C to +75°C
4. Storage Temperature: -30°C to +85°C

B. ELECTRICAL CHARACTERISTICS:

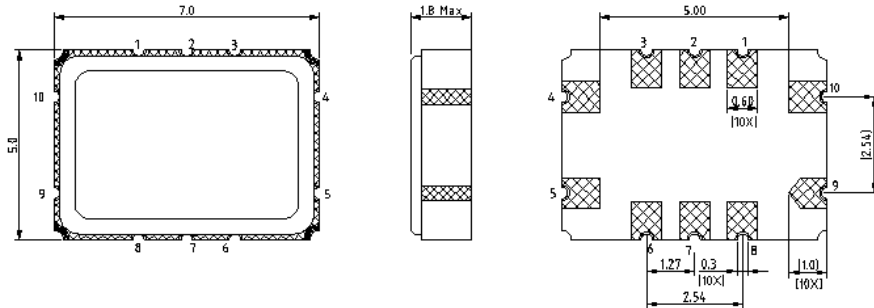
Item	Unit	Min.	Typ.	Max.	Note
Center frequency Fc	MHz	-	135.53	-	-
Minimum Insertion loss IL	dB	-	3.3	5.3	-
Passband Ripple (Fc ± 10kHz)	dB	-	0.3	1.5	-
Passband Ripple (Fc ± 13kHz)	dB	-	0.5	3	-
3dB Bandwidth	KHz	-	87	-	-
Group delay deviation (Fc ± 13kHz)	μ sec	-	2	10	-
Relative Attenuation (relative to 0dB)					
Fc ± 120kHz ~ Fc ± 240kHz	dB	20	36	-	-
Fc ± 240kHz ~ Fc ± 1000kHz	dB	50	52	-	-
Fc ± 330kHz	dB	50	62	-	-
Fc ± 660kHz	dB	50	63	-	-
Temperature coefficient of frequency	-0.032ppm/C ²				

Note. Considering -11kHz frequency shift from -20°C to +75°C

SAW Filter: 135.53MHz
Part No: MA09494

Model: TB0557A
Rev No: 1

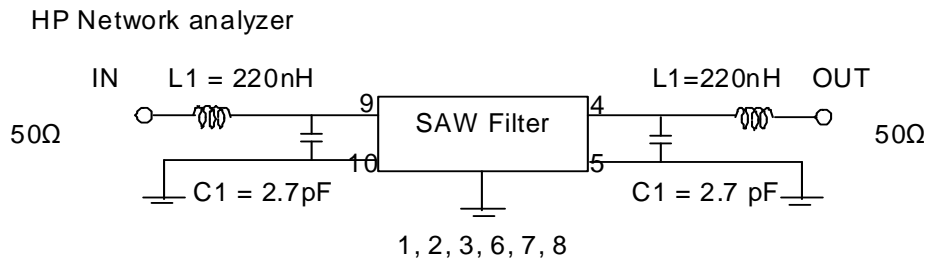
C. OUTLINE DRAWING:



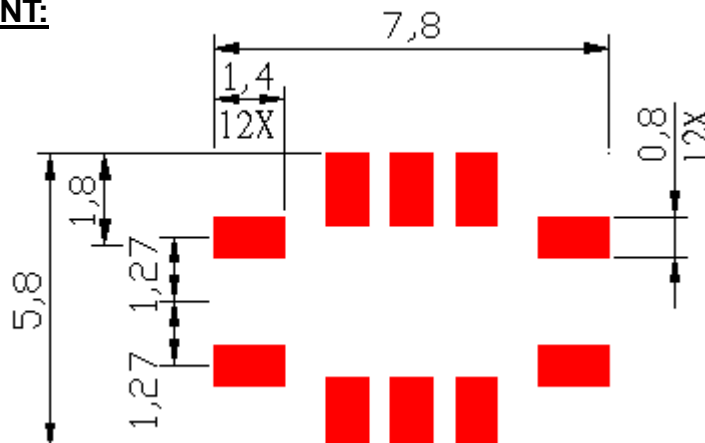
- 9: Input
 - 4: Output
 - 10: Balance input or input ground
 - 5: Balance output or output ground
 - 1, 2, 3, 6, 7, 8: To be grounded
- Unit: mm

D. MEASUREMENT CIRCUIT:

50Ω Test circuit (single-ended / single-ended)



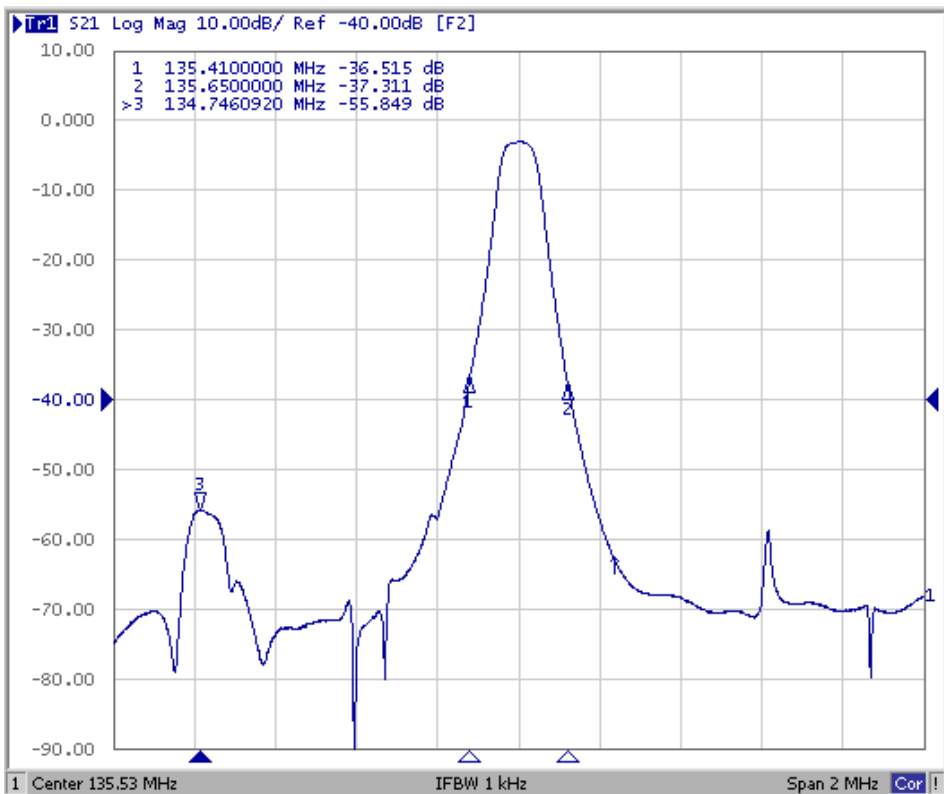
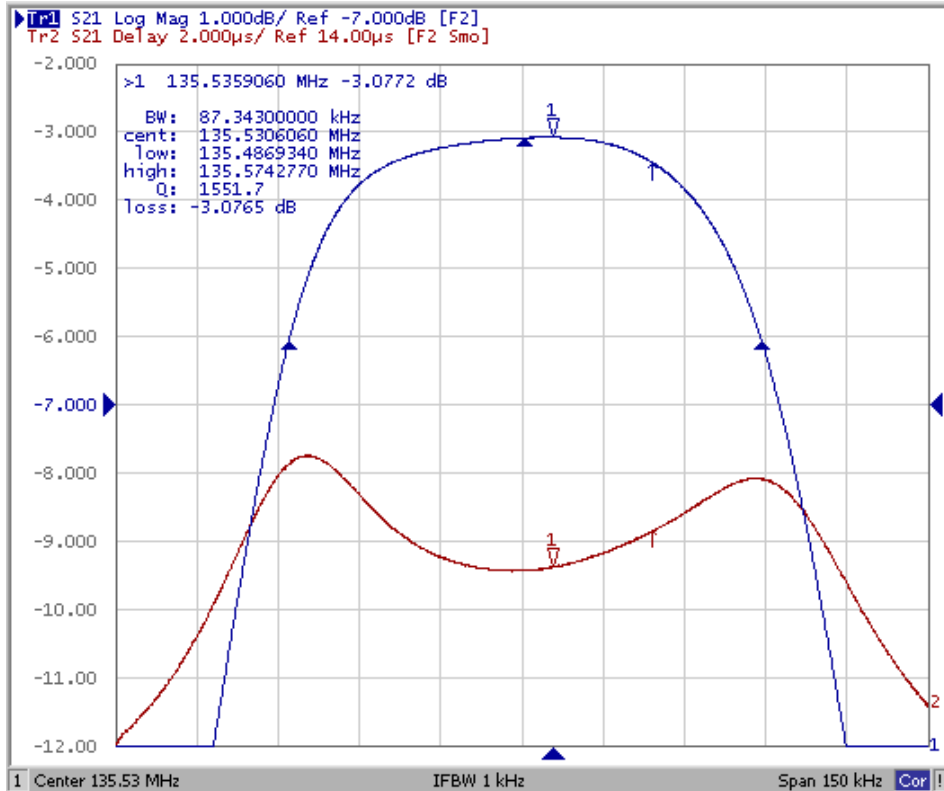
E. PCB FOOTPRINT:



SAW Filter: 135.53MHz
Part No: MA09494

Model: TB0557A
Rev No: 1

F. FREQUENCY CHARACTERISTICS:

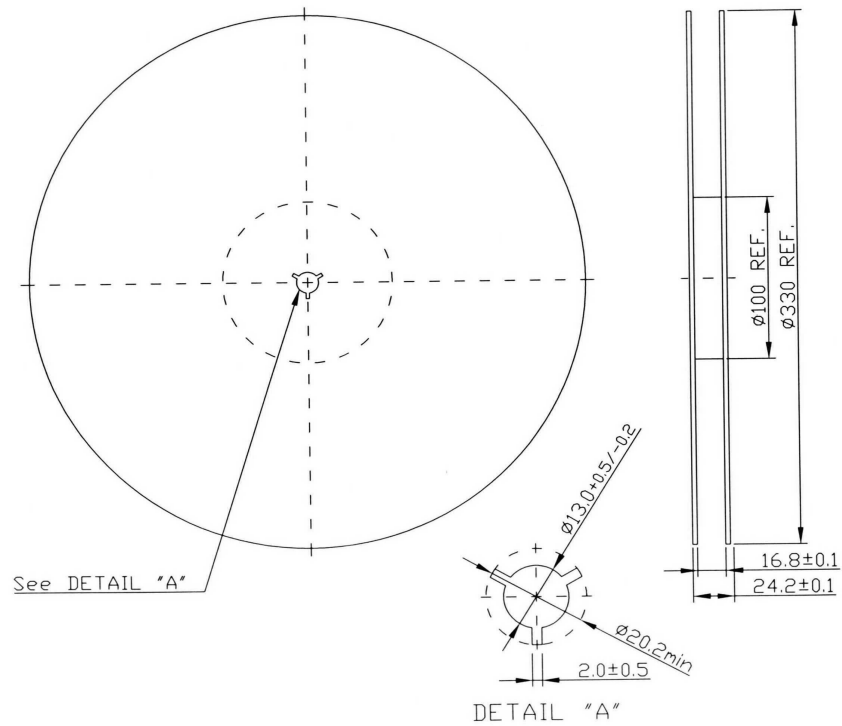


SAW Filter: 135.53MHz
Part No: MA09494

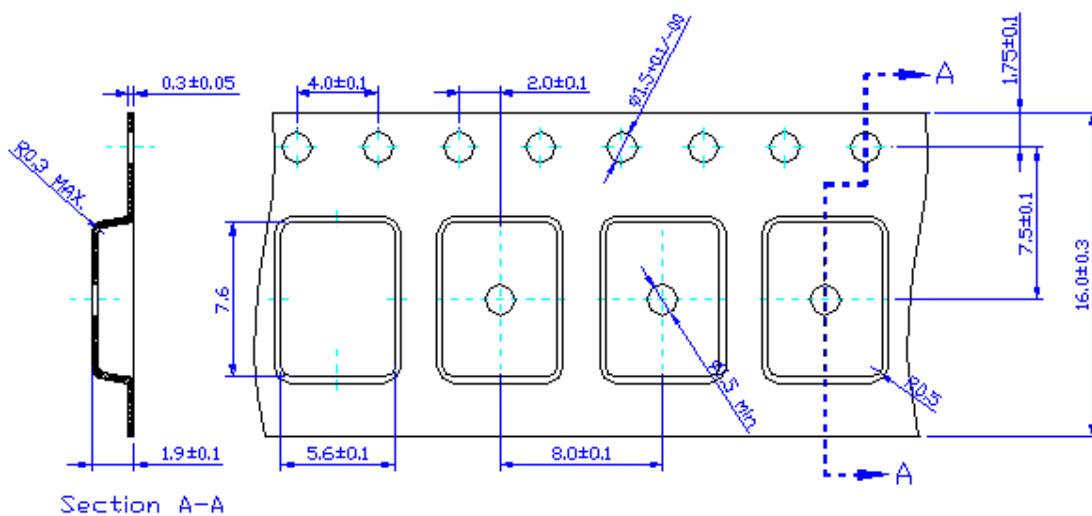
Model: TB0557A
Rev No: 1

G. PACKING:

1. REEL DIMENSION



2. TAPE DIMENSION



SAW Filter: 135.53MHz
Part No: MA09494

Model: TB0557A
Rev No: 1

H. RECOMMENDED REFLOW PROFILE:

