

70MHz SAW Filter

Model: TB0505A

Part No: MA09489

REV NO.: 1

A. MAXIMUM RATING:

1. Input Power Level: 10dBm
2. DC Voltage: 5V
3. Operating Temperature: -10°C to 60°C
4. Storage Temperature: -40°C to 85°C

B. ELECTRICAL CHARACTERISTICS: (Ambient temperature: 25°C)

Item	Unit	Min.	Type.	Max.	Note
Center frequency, Fc	MHz	69.955	70	70.044	-
Insertion Loss, IL	dB	-	3.2	6	-
3dB bandwidth	dB	0.03	0.05	-	-
40dB bandwidth	dB	-	0.14	0.2	-
Absolute Group Delay at Fc	μ s	-	16	-	-
Group Delay Variation (70±0.015 MHz)	μ s	-	6	12	-
Attenuation:(Reference level from Min IL)					
0.3MHz ~ 69.8MHz	dB	48	58	-	-
70.2MHz ~ 71MHz	dB	35	43	-	-
71MHz ~ 71.5MHz	dB	35	45	-	-
71.5MHz ~ 75MHz	dB	45	48	-	-
Temperature coefficient of frequency	TCF	-0.032 ppm/C ²			

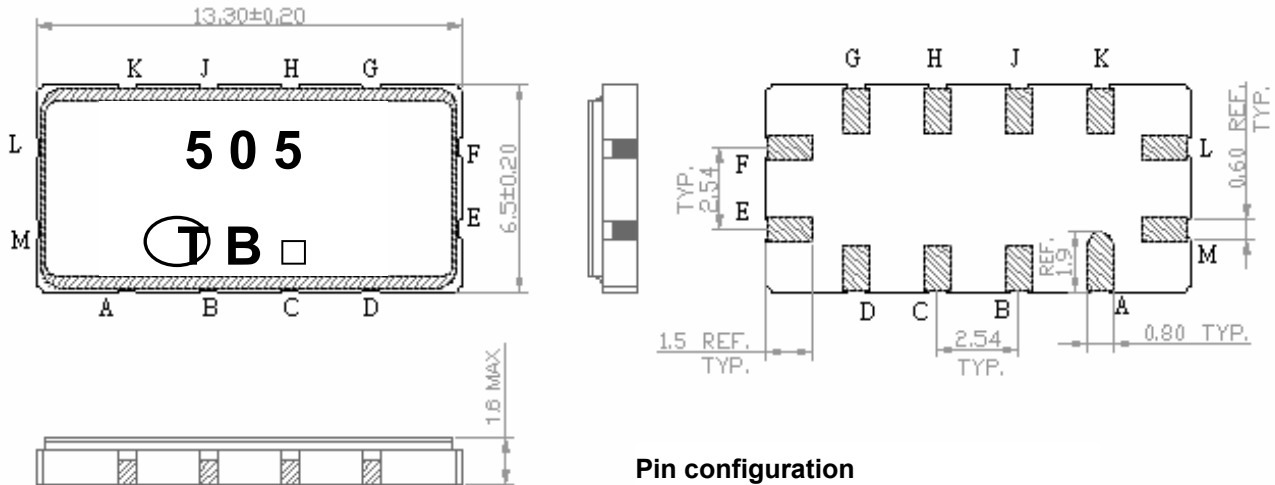
70MHz SAW Filter

Model: TB0505A

Part No: MA09489

REV NO.: 1

C. OUTLINE DRAWING:

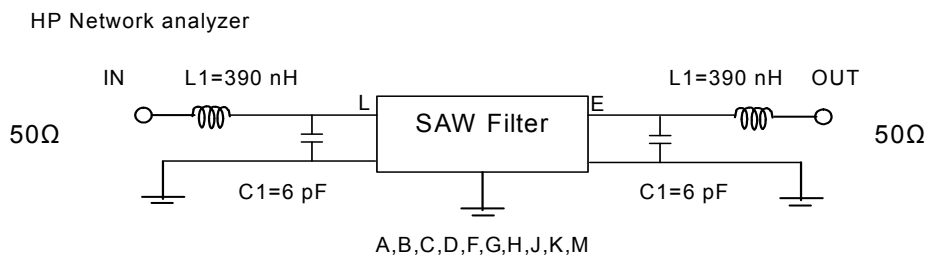


Pin configuration

- #L Input
 - #M Input RF-Return
 - #E Output
 - #F Output RF-Return
 - #A,B,C,D,G,H,J,K To be grounded
 - Date code
- Unit mm

D. MEASUREMENT CIRCUIT:

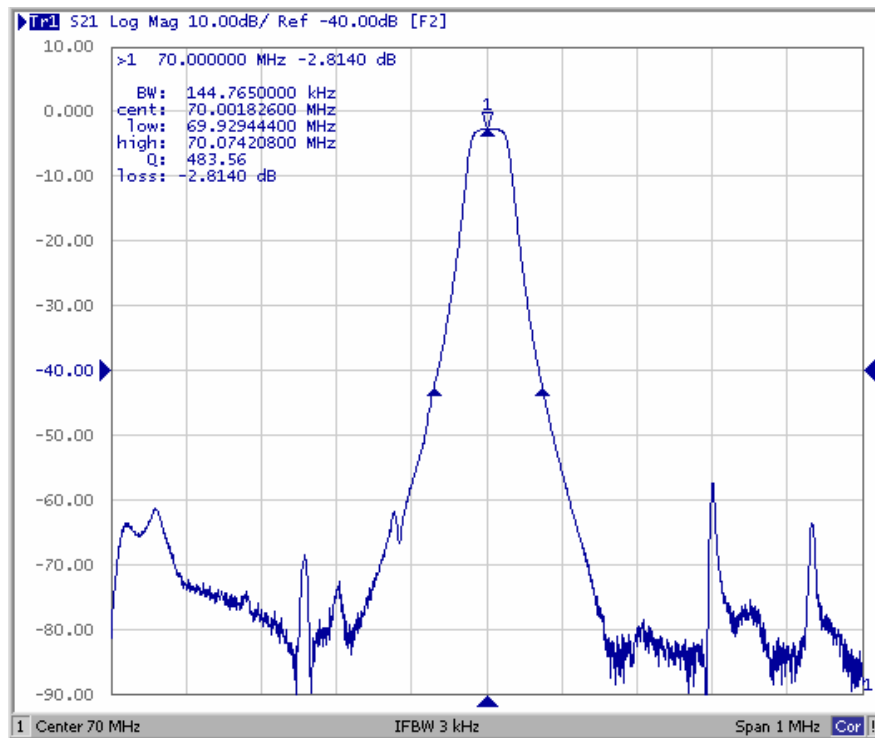
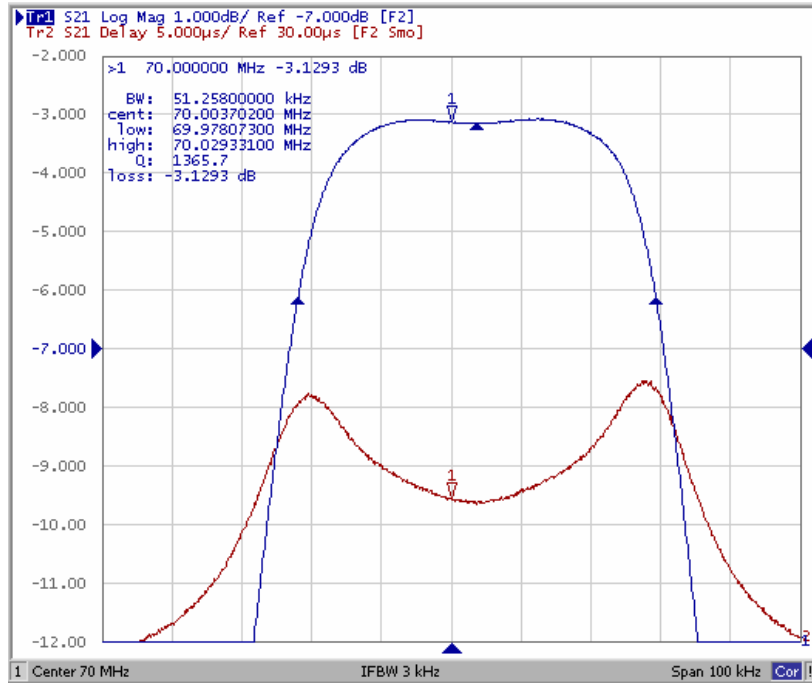
50 Ohm Test circuit (single-ended/single-ended)



70MHz SAW Filter
Part No: MA09489

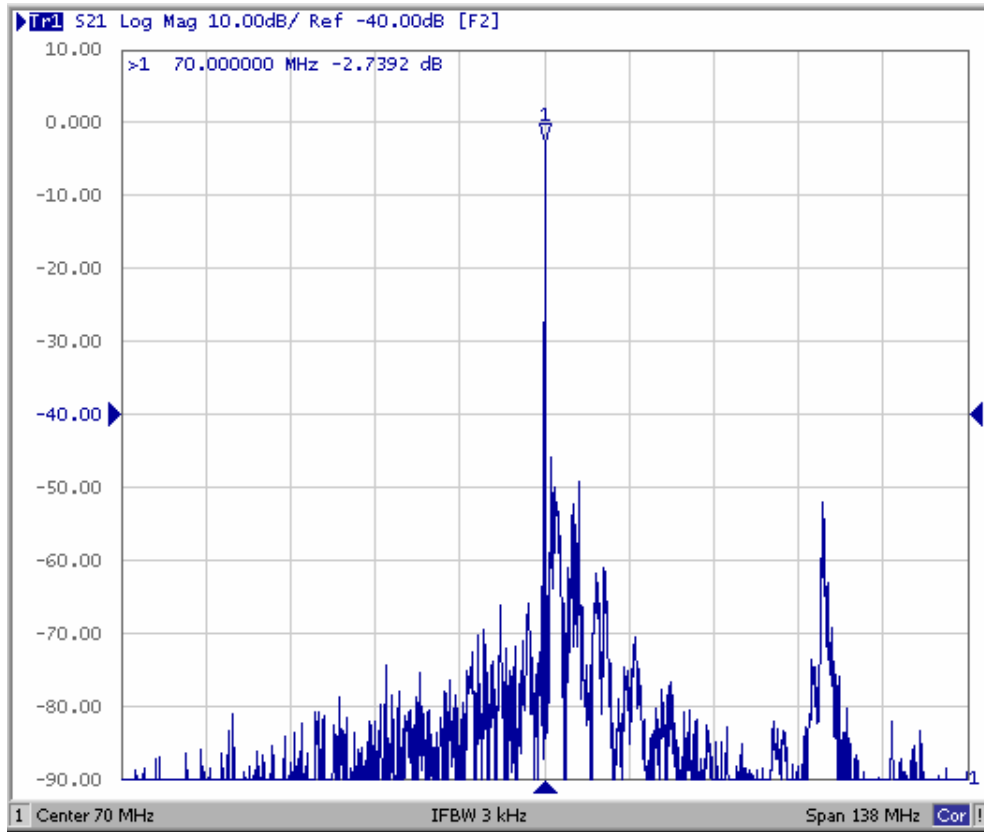
Model: TB0505A
REV NO.: 1

E. FREQUENCY CHARACTERISTICS:

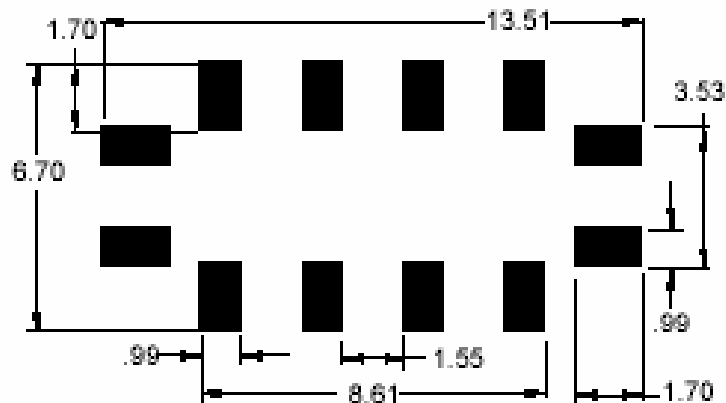


70MHz SAW Filter
Part No: MA09489

Model: TB0505A
REV NO.: 1



F. PCB FOOTPRINT:

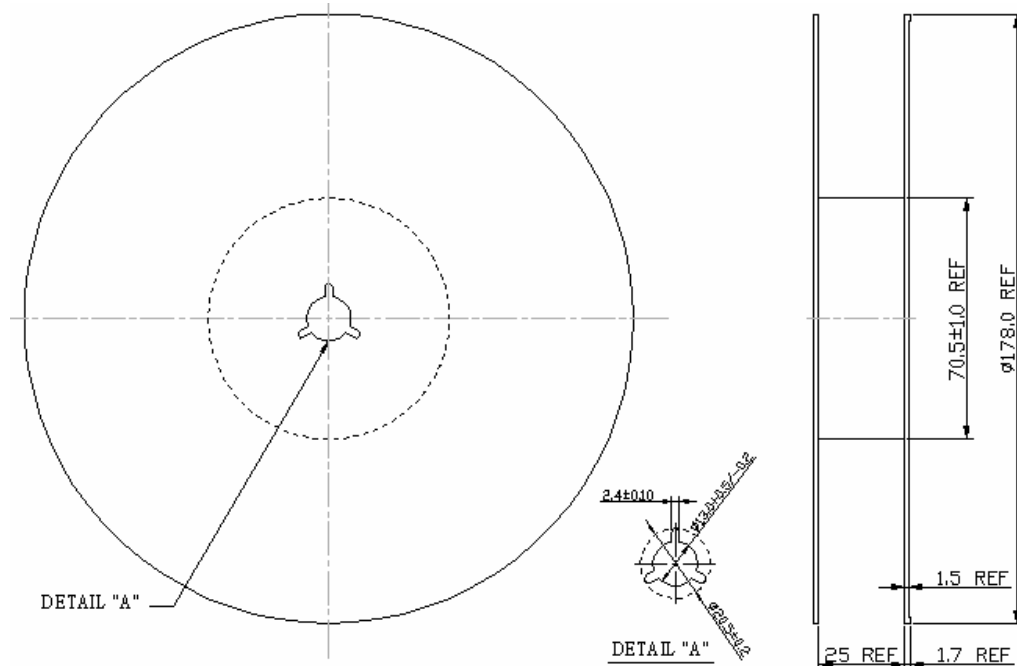


70MHz SAW Filter
Part No: MA09489

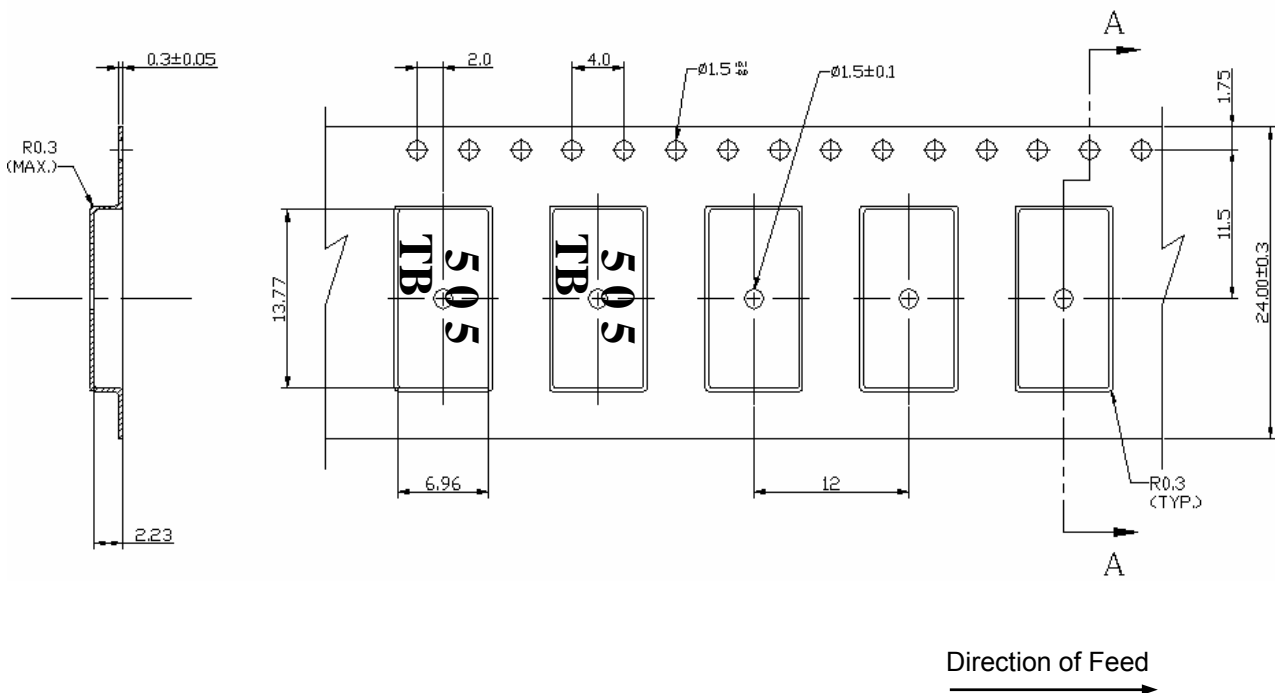
Model: TB0505A
REV NO.: 1

G. PACKING:

1. REEL DIMENSION



2. TAPE DIMENSION



70MHz SAW Filter

Model: TB0505A

Part No: MA09489

REV NO.: 1

H. RECOMMENDED REFLOW PROFILE:

