

315.0MHz SAW Filter

Model: **TA0500A**

Part No: **MA09382**

REV NO.: 1

A. MAXIMUM RATING:

1. Input Power Level: 10 dBm
2. DC voltage: 5 V
3. Operating Temperature: -40°C to +85°C
4. Storage Temperature: -40°C to +85°C

B. ELECTRICAL CHARACTERISTICS:

TA= -40°C to +95°C

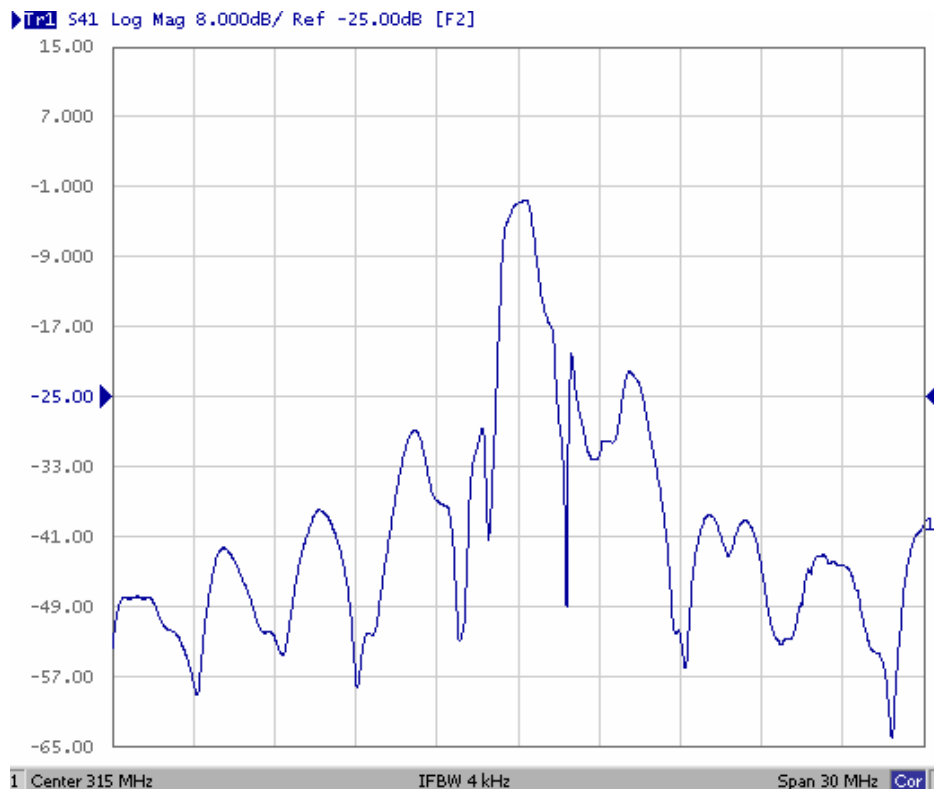
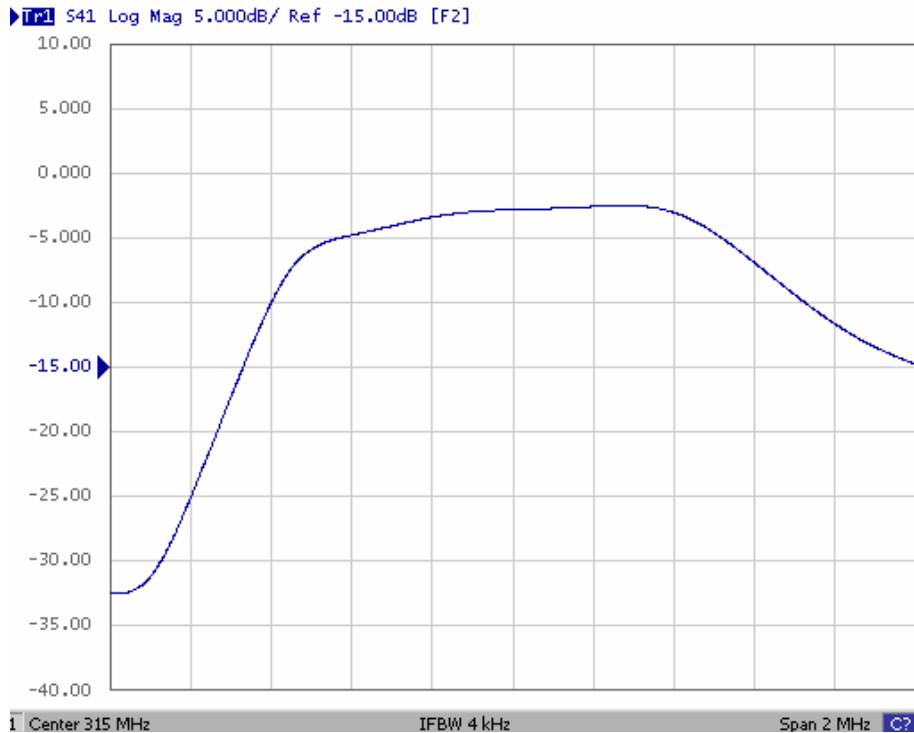
Item	Min.	Typ.	Max.	Note
Center frequency F_c (MHz)	-	315	-	1
Minimum I.L. (314.82~315.22 MHz) (dB) IL_{min}	-	2.4	4.0	
Pass band (relative to IL_{min})				
314.77~315.2 MHz (dB)	-	1.5	3.0	1
314.71~315.26 MHz (dB)	-	2.0	6.0	
Pass bandwidth (relative to IL_{min}) BW_3 (KHz)	800	970	-	
Attenuation:(relative to IL_{min}) (dB)				
10~270 MHz (dB)	45	50	-	1
270~309 MHz (dB)	30	35	-	
309~313.94 MHz (dB)	15	20	-	
316.5~335 MHz (dB)	10	15	-	
335~400 MHz (dB)	35	40	-	
400~1000 MHz (dB)	45	50	-	
Impedance at F_c ; Input $Z_{IN}=R_{IN}/C_{IN}$ Output $Z_{OUT}=R_{OUT}/C_{OUT}$	373Ω // 5.0 pF 373Ω // 5.0 pF			

Note1. The standard definitions is in JIS C 6703

315.0MHz SAW Filter
Part No: MA09382

Model: TA0500A
REV NO.: 1

C.FREQUENCY CHARACTERISTICS:



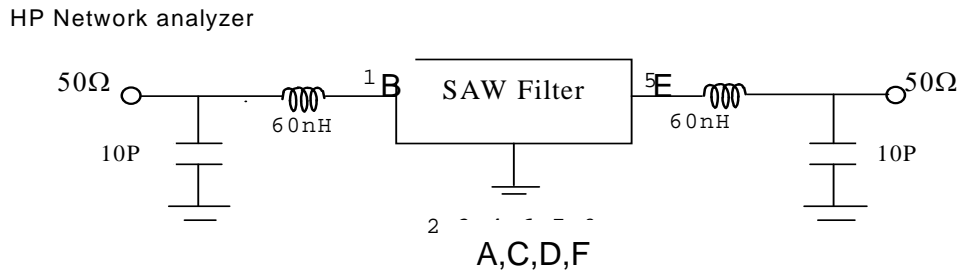
315.0MHz SAW Filter

Model: TA0500A

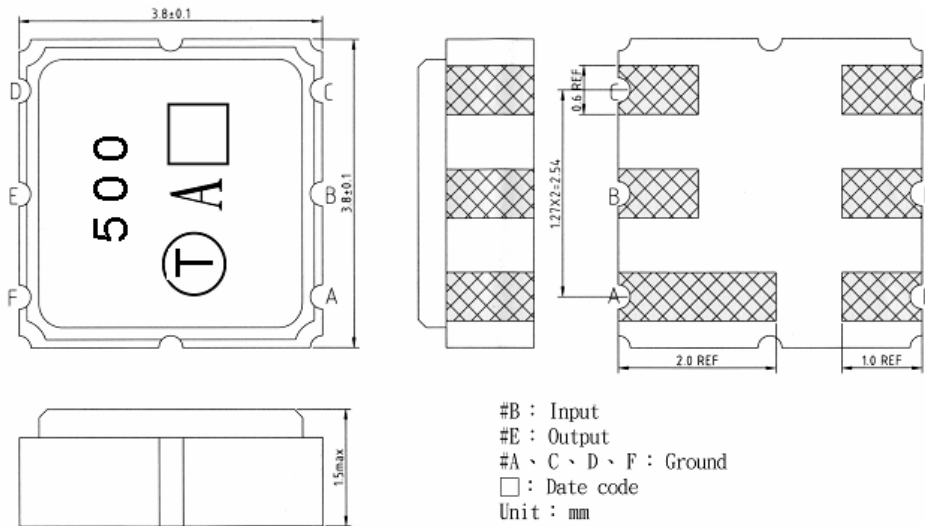
Part No: MA09382

REV NO.: 1

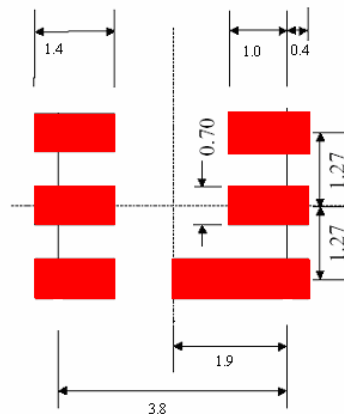
D. MEASUREMENT CIRCUIT:



E. OUTLINE DRAWING:



F. PCB FOOTPRINT

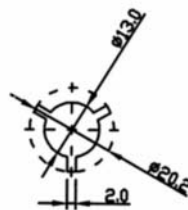
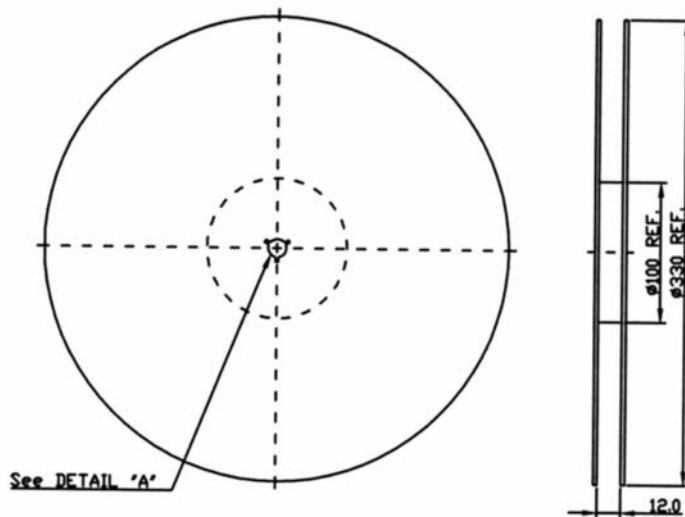


315.0MHz SAW Filter
Part No: MA09382

Model: TA0500A
REV NO.: 1

G. PACKING:

1. REEL DIMENSION



2. TAPE DIMENSION

