

SAW Filter: 284MHz
Part No: MA09364

Model: TA0205A
Rev No: 1

A. MAXIMUM RATING:

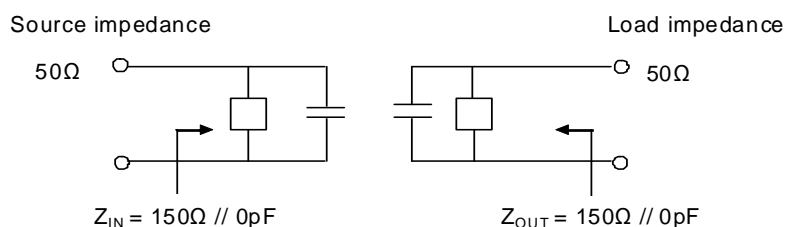
1. Input Power Level: 0dBm
2. DC voltage: 10V
3. Operating Temperature: -10°C to +50°C
4. Storage Temperature: -40°C to +85°C

B. ELECTRICAL CHARACTERISTICS:

Characteristics	Specification	Note
Center frequency Fc (MHz)	284	1
IL (Within Fc ± 4MHz) (dB)	4.5 max.	
Pass band BW 4.5dB (MHz)	8.0 min.	1
Ripple (Within Fc ± 4MHz) (dB)	2.0 max.	1
Attenuation: (Reference level from 0dB)		
Fc -100MHz to -37.5MHz (dB)	48 min.	1
Fc +37.5MHz to +100MHz (dB)	48 min.	
Impedance at Fc: Input Z _{IN} = R _{IN} // C _{IN}	150Ω // 0pF	2
Output Z _{OUT} = R _{OUT} // C _{OUT}	150Ω // 0pF	2

Note 1. The standard definitions is in JIS C 6703

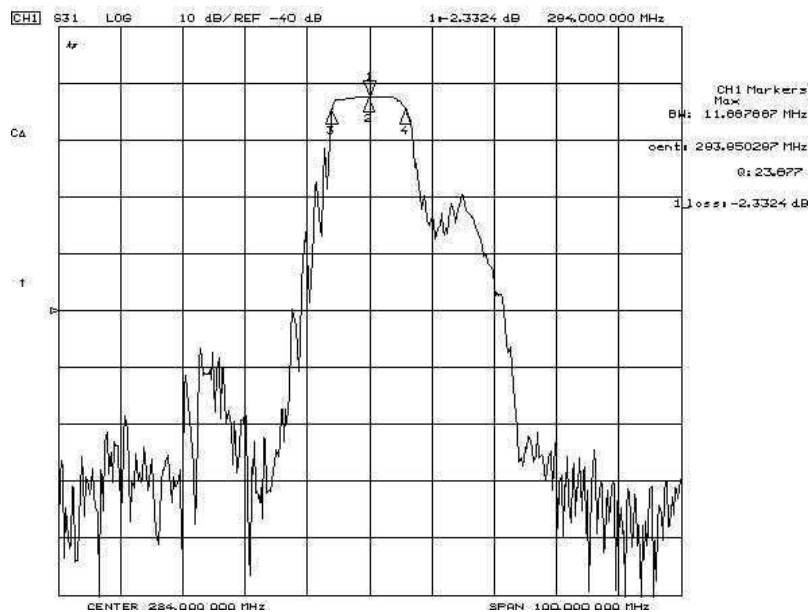
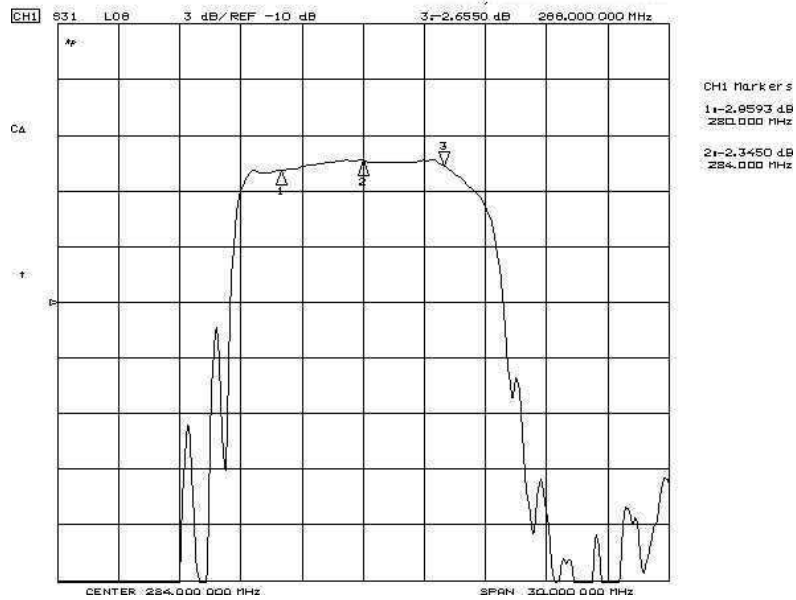
Note 2.



SAW Filter: 284MHz
Part No: MA09364

Model: TA0205A
Rev No: 1

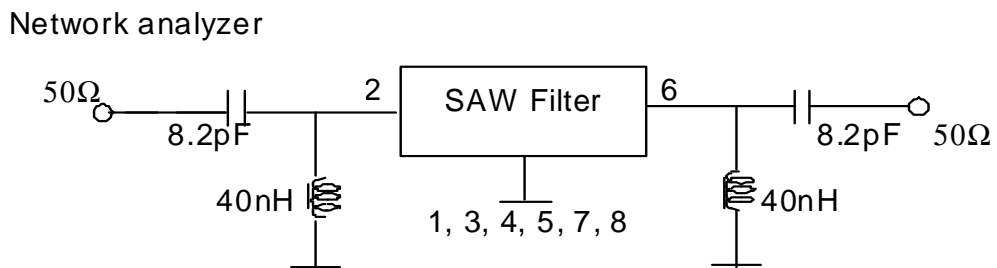
C. FREQUENCY CHARACTERISTICS:



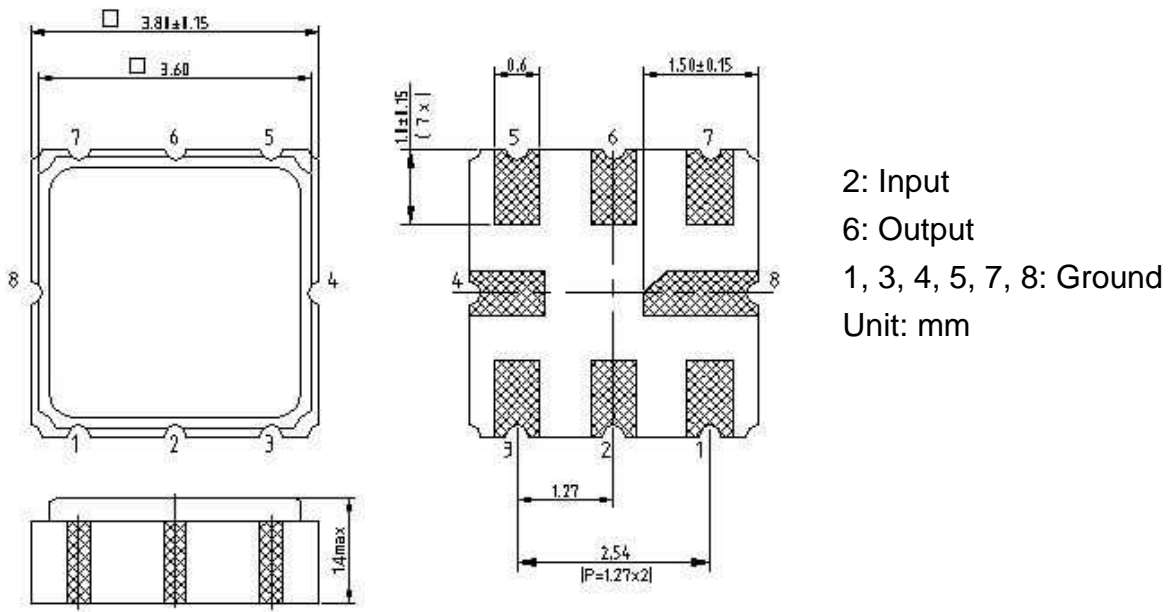
SAW Filter: 284MHz
Part No: MA09364

Model: TA0205A
Rev No: 1

D. MEASUREMENT CIRCUIT:



E. OUTLINE DRAWING:

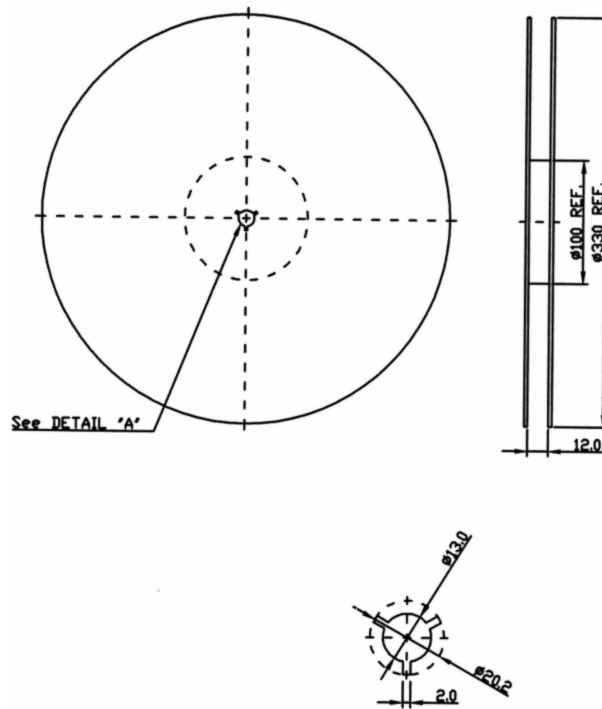


SAW Filter: 284MHz
Part No: MA09364

Model: TA0205A
Rev No: 1

F. PACKING:

1. REEL DIMENSION



2. TAPE DIMENSION

