

500.0MHz SAW Resonator
 Part No: **MA09357**

Model: TC0378A
 REV NO.: 1

A. FEATURES:

- 1-Port Resonator.

B. MAXIMUM RATING:

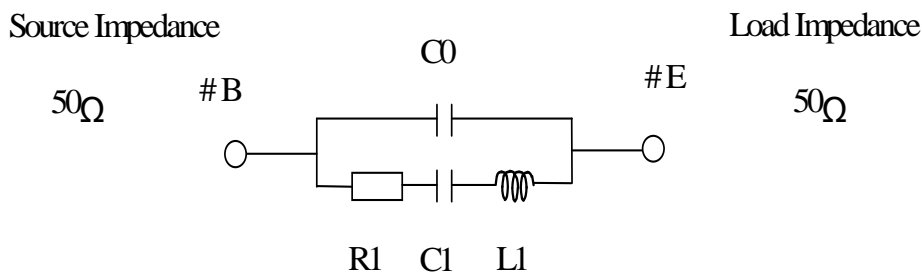
1. Input Power Level: 10 dBm
2. DC voltage: 5 V
3. Operating Temperature: -40°C to +85°C
4. Storage Temperature: -40°C to +85°C

C. ELECTRICAL CHARACTERISTICS:

Characteristic	Units	Minimum	Typical	Maximum
Center frequency Fr	MHz	499.965	500	500.035
Insertion Loss IL	dB	-	0.98	2.0
Equivalent Elements				
Motional capacitance C1	fF	-	3.07	-
Motional inductance L1	μH	-	32.95	-
Motional resistance R1	Ohm	-	13.96	-
Parallel capacitance Co	pF	-	4.35	-
Temp.coeff.	ppm/c*2	-	0.032	-
Turnover To	deg.C	-	25	-
Package size		SMD 3.0X3.0X1.4mm		

D. EQUIVALENT CIRCUIT:

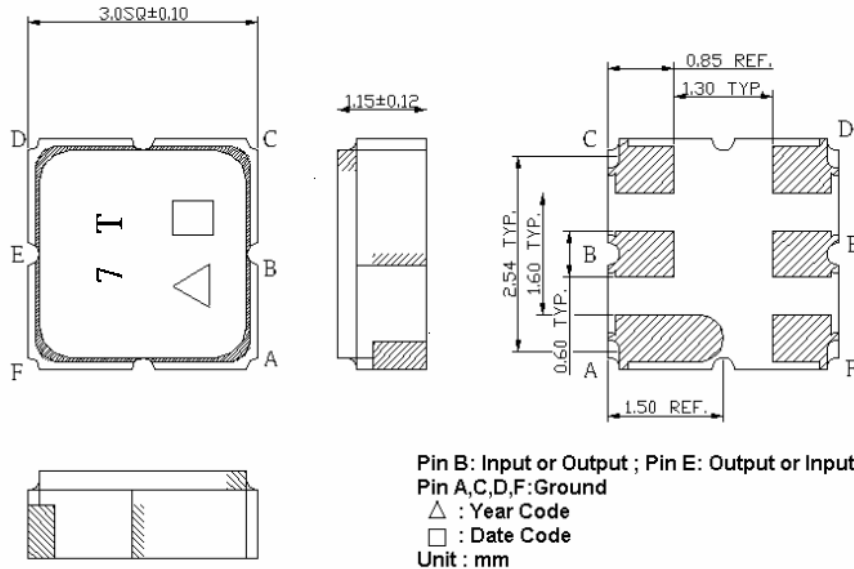
One-Port Resonator:



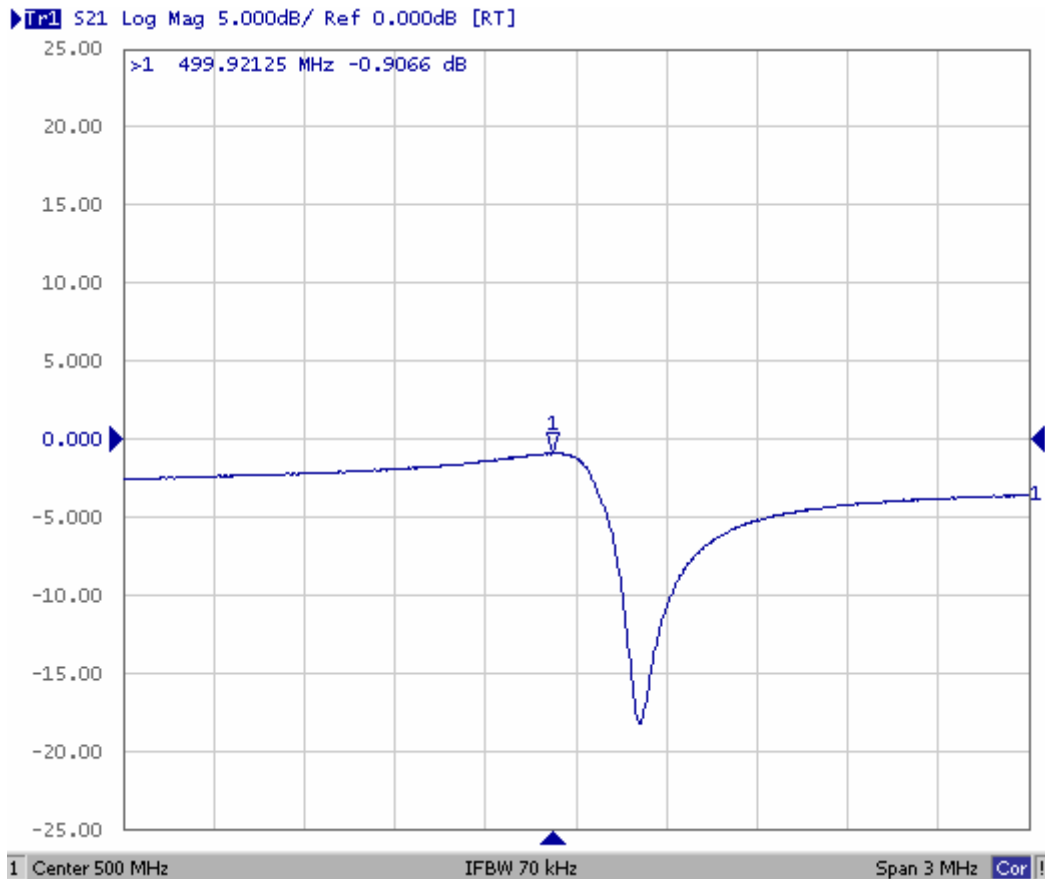
500.0MHz SAW Resonator
Part No: MA09357

Model: TC0378A
REV NO.: 1

E. OUTLINE DRAWING:



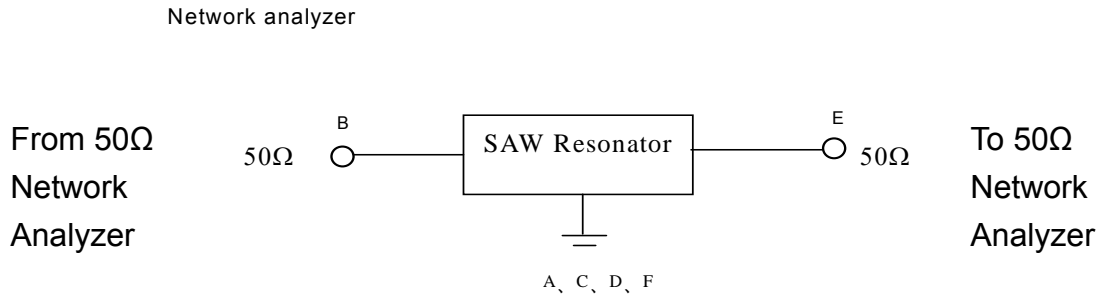
F. FREQUENCY CHARACTERISTICS



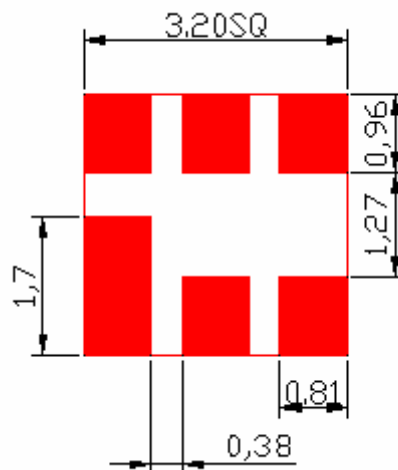
500.0MHz SAW Resonator
Part No: **MA09357**

Model: TC0378A
REV NO.: 1

G. TEST CIRCUIT:



H. LAND PATTERN:

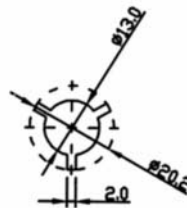
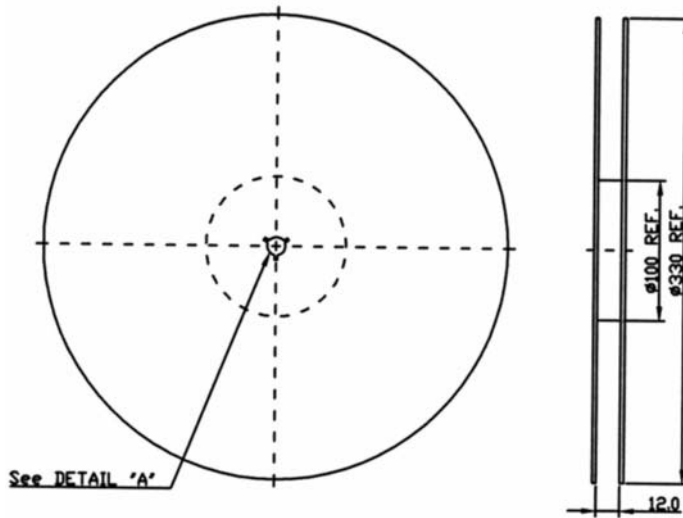


500.0MHz SAW Resonator
Part No: MA09357

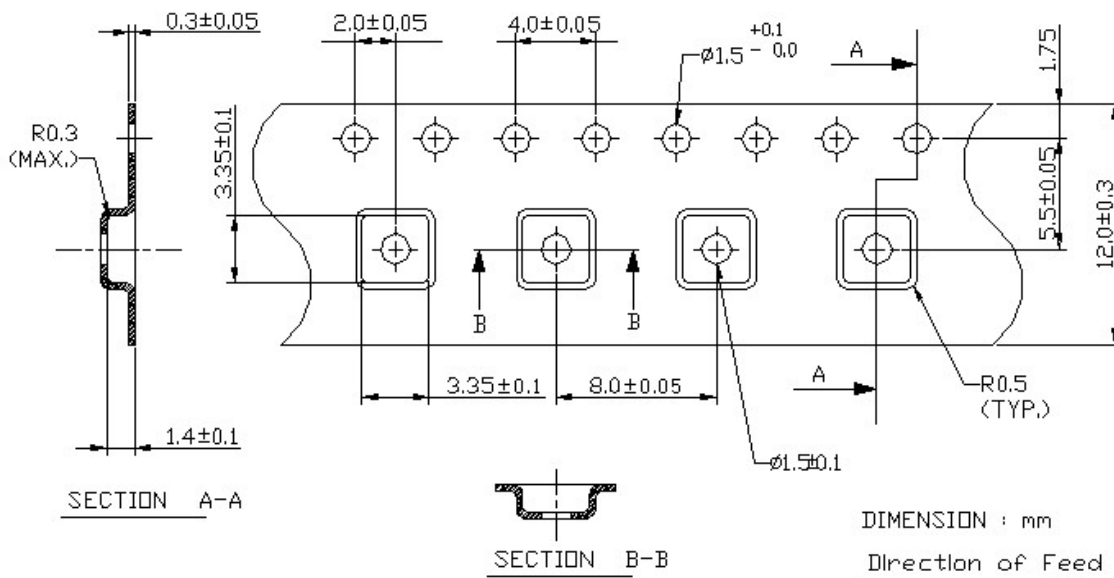
Model: TC0378A
REV NO.: 1

I. PACKING:

1. REEL DIMENSION



2. TAPE DIMENSION



DIMENSION : mm
 Direction of Feed

500.0MHz SAW Resonator
Part No: MA09357

Model: TC0378A
REV NO.: 1

J. RECOMMENDED REFLOW PROFILE:

