

1000.0MHz SAW Resonator
Part No: MA09355

Model: TC0306A
REV NO.: 1

A. FEATURES:

- 1-Port Resonator.

B. MAXIMUM RATING:

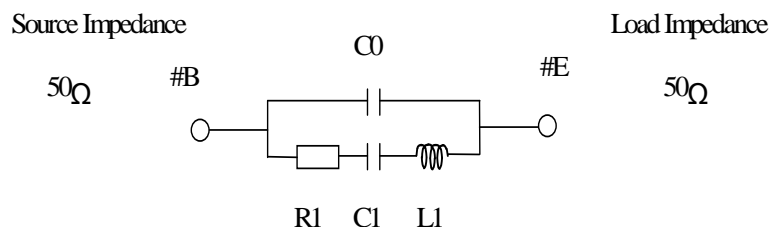
1. Input Power Level: 0 dBm
2. DC voltage: 12 V
3. Operating Temperature: -40°C to +85°C
4. Storage Temperature: -40°C to +85°C

C. ELECTRICAL CHARACTERISTICS:

| Characteristic | Units | Minimum | Typical | Maximum |
|--------------------------------|----------------|-------------------|---------|----------|
| Center frequency Fr | MHz | 999.875 | 1000 | 1000.125 |
| Insertion Loss IL | dB | - | 1.5 | 2.0 |
| Equivalent Elements | | | | |
| Motional capacitance C1 | fF | - | 0.969 | - |
| Motional inductance L1 | μH | - | 26.13 | - |
| Motional resistance R1 | Ohm | - | 20.73 | - |
| Parallel capacitance Co | pF | - | 2.06 | - |
| Temp. coeff. | ppm/c*2 | - | 0.032 | - |
| Turnover To | deg.C | - | 25 | - |
| Package size | | SMD 3.8X3.8X1.4mm | | |

D. EQUIVALENT CIRCUIT:

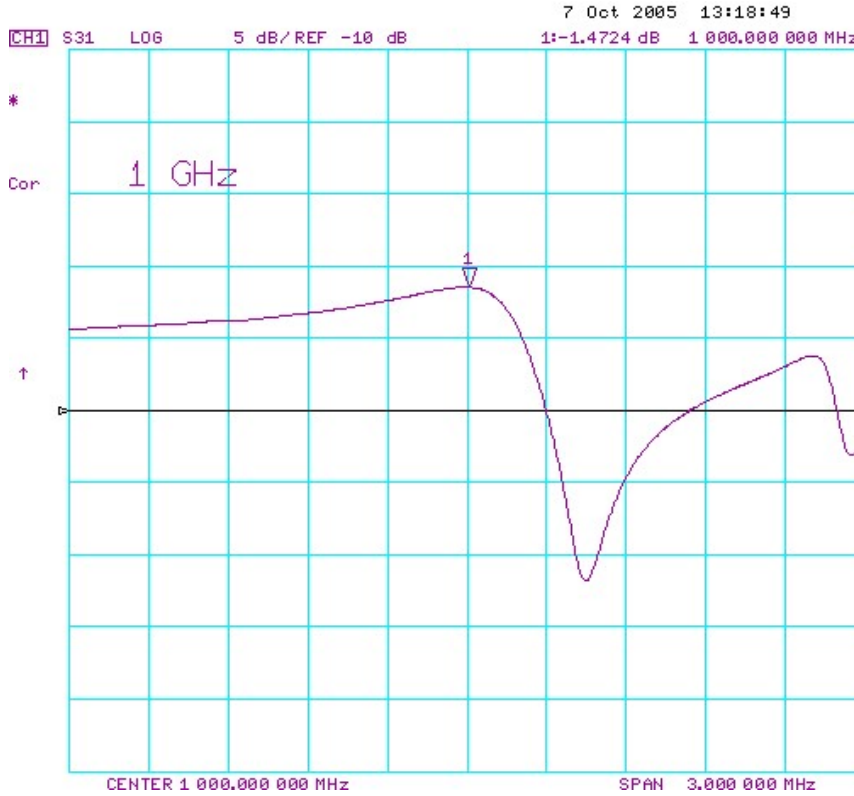
One-Port Resonator:



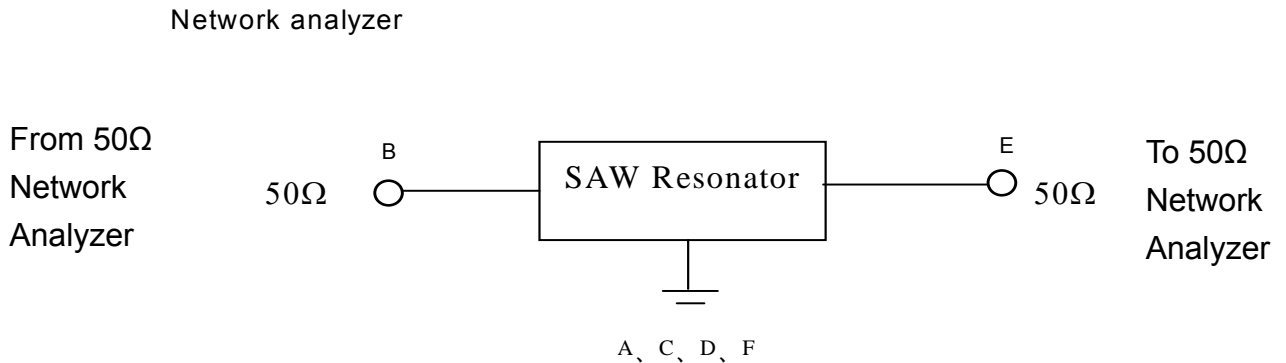
1000.0MHz SAW Resonator
Part No: **MA09355**

Model: TC0306A
REV NO.: 1

E.FREQUENCY CHARACTERISTICS:



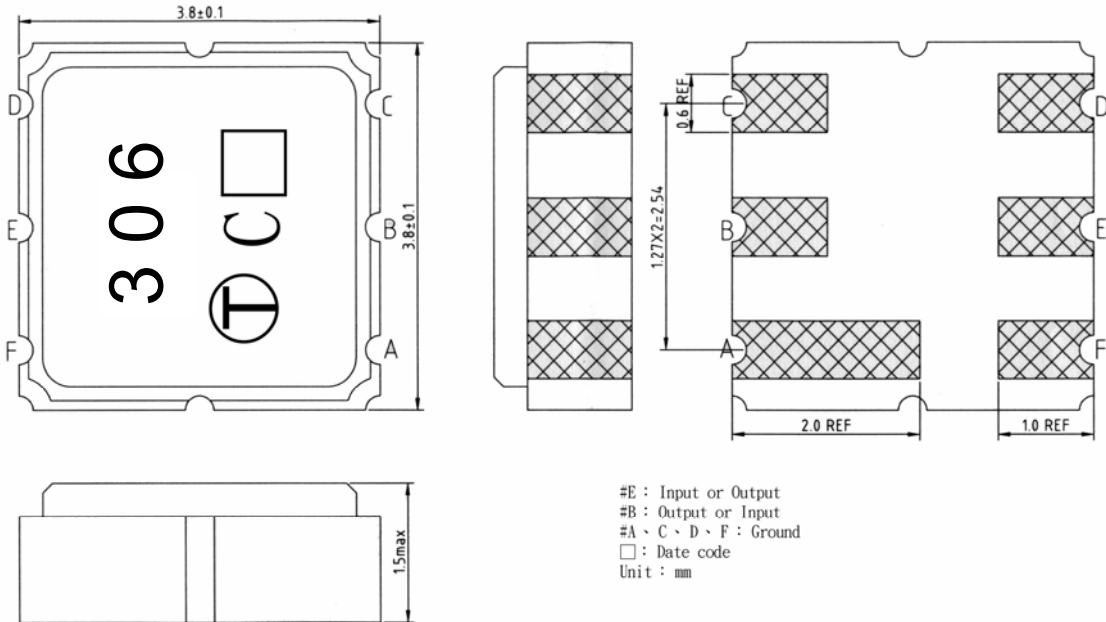
F. TEST CIRCUIT:



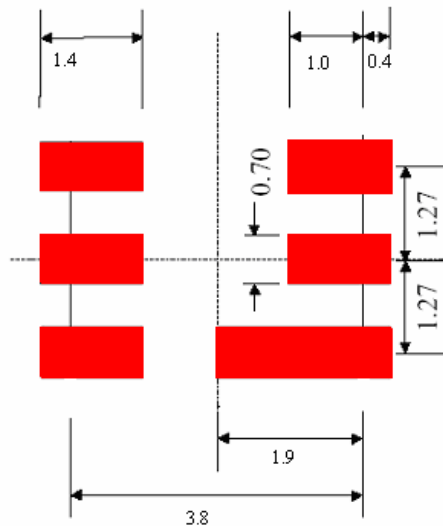
1000.0MHz SAW Resonator
Part No: MA09355

Model: TC0306A
REV NO.: 1

G. OUTLINE DRAWING:



H. PCB FOOT PRINT:

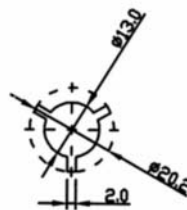
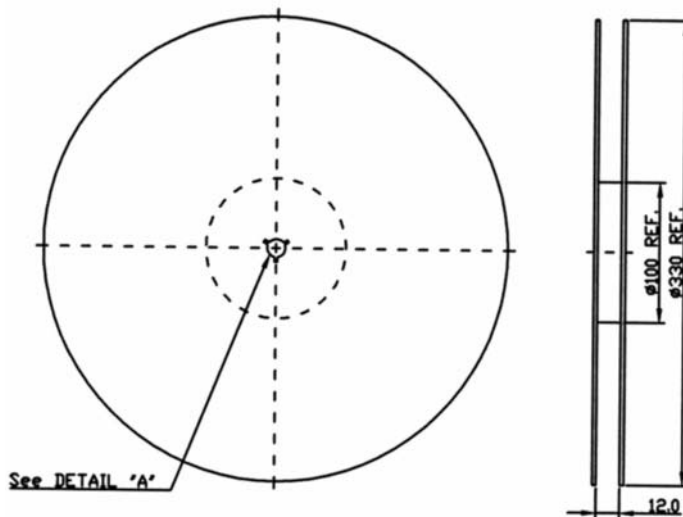


1000.0MHz SAW Resonator
Part No: MA09355

Model: TC0306A
REV NO.: 1

I. PACKING:

1. REEL DIMENSION



2. TAPE DIMENSION

