
78.0MHz SAW Filter**Model: TB0444A****Part No: MA09274****REV NO.: 1**

A. MAXIMUM RATING:

1. Input Power Level: 10 dBm
2. DC Voltage : 5V
3. Operating Temperature: -20°C to 70°C
4. Storage Temperature: -40°C to 85°C

B. ELECTRICAL CHARACTERISTICS:

Item	Unit	Min.	Typ.	Max.	Note
Center frequency, Fc	MHz	-	78	-	-
Insertion Loss at Fc (-30 to +85°C) IL	dB	-	3.1	8	-
Insertion Loss at Fc (-10 to +65°C) IL			2.9	5.5	
Passband Ripple (Fc ±7.5KHz)	dB	-	0.05	0.6	-
Absolute Group Delay at Fc	μ s	-	15	25	-
Group Delay Variation (Fc ±7.5KHz), GD	μ s	-	1.5	10	-
Attenuation:					
Fc - 10 to Fc - 1 MHz	dB	35	65	-	-
Fc + 1 to Fc + 10 MHz	dB	35	40	-	-

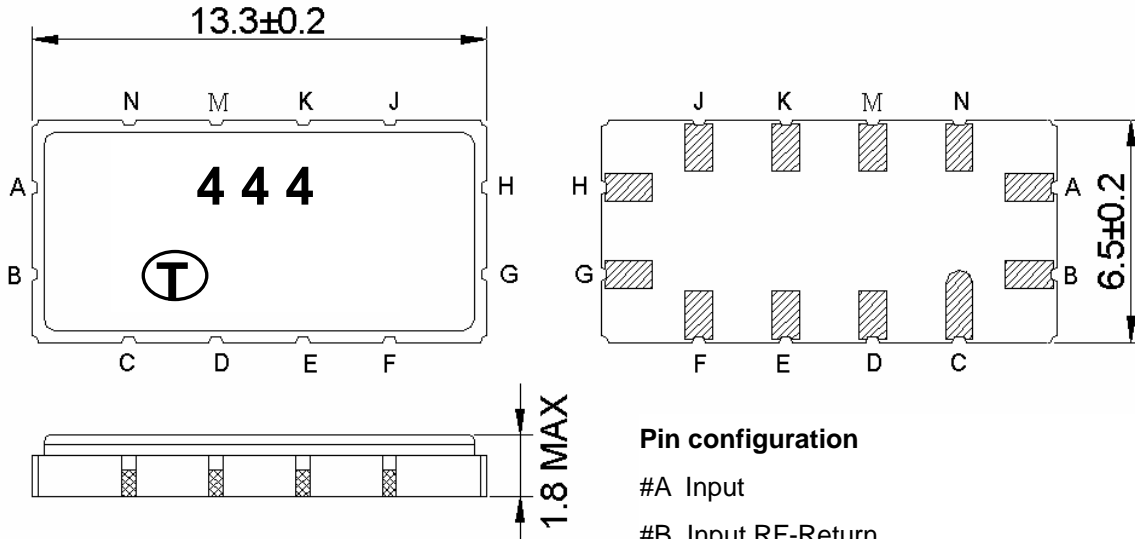
78.0MHz SAW Filter

Model: TB0444A

Part No: MA09274

REV NO.: 1

C. OUTLINE DRAWING:

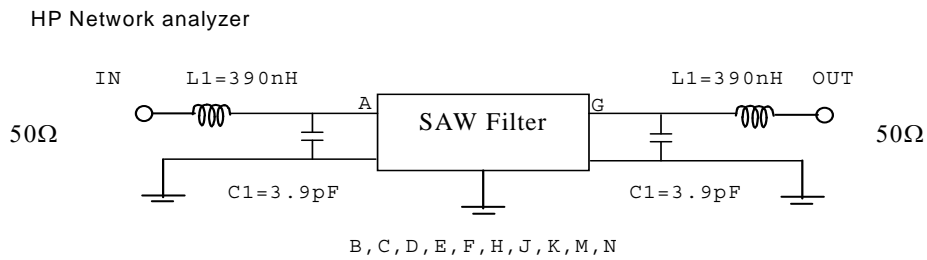


Pin configuration

- #A Input
 - #B Input RF-Return
 - #G Output
 - #H Output RF-Return
 - #C,D,E,F,J,K,M,N To be grounded
- Unit mm

D. MEASUREMENT CIRCUIT:

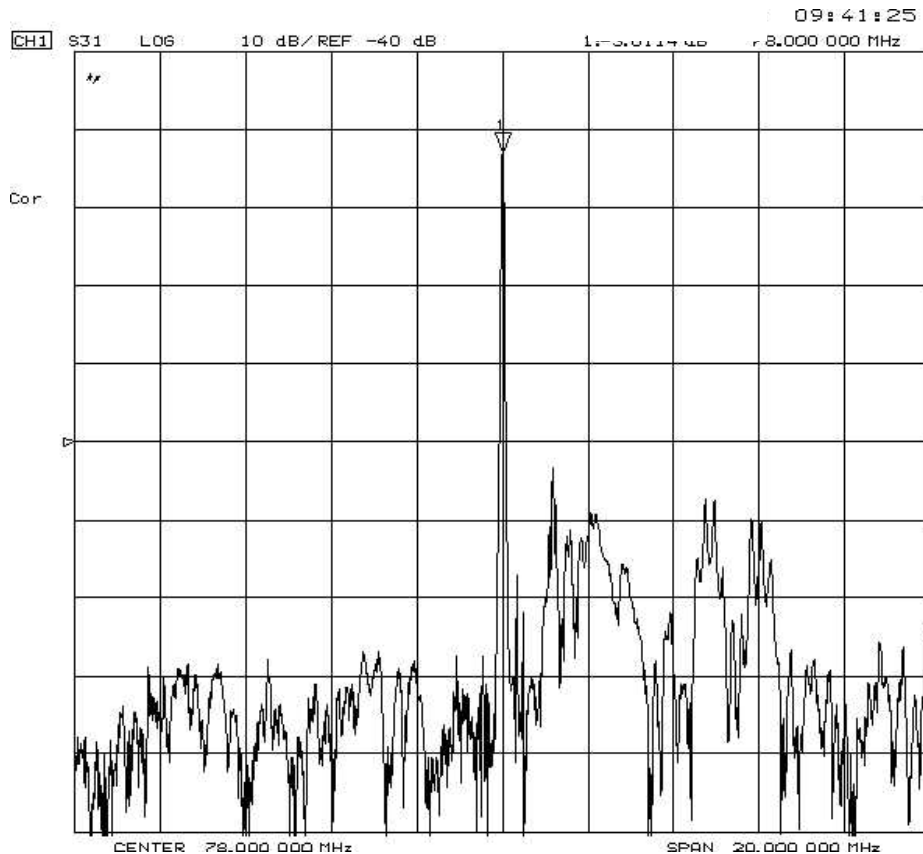
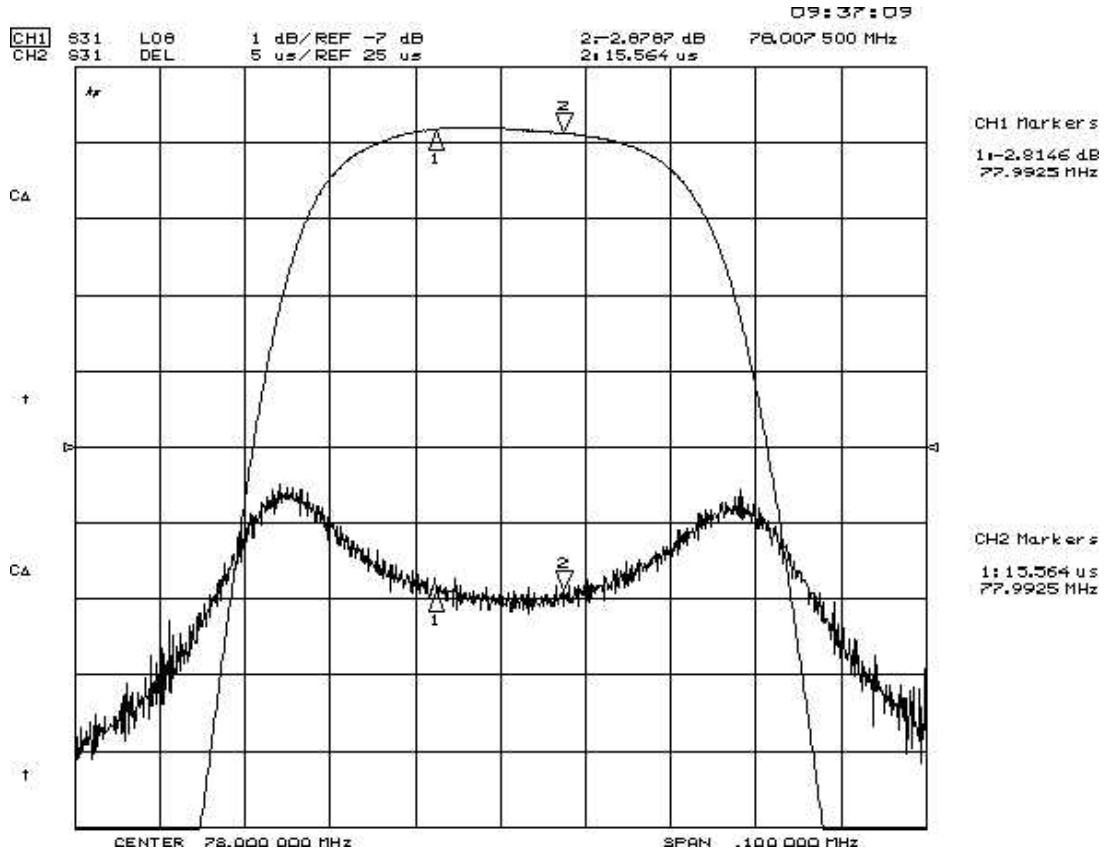
50 Ohm Test circuit (single-ended / single-ended)



78.0MHz SAW Filter
Part No: MA09274

Model: TB0444A
REV NO.: 1

E. FREQUENCY CHARACTERISTICS:



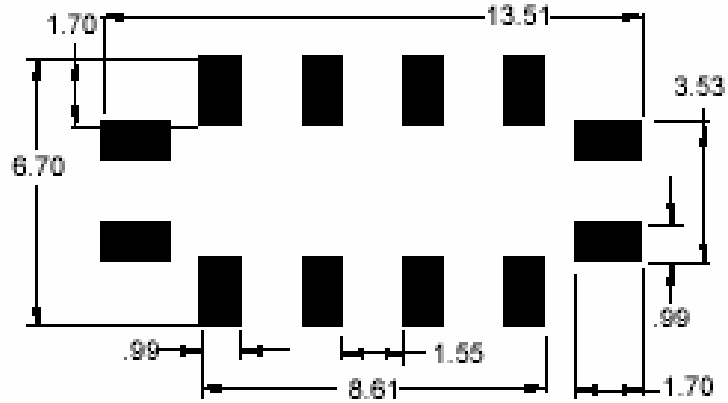
78.0MHz SAW Filter

Model: TB0444A

Part No: MA09274

REV NO.: 1

F. PCB FOOTPRINT:

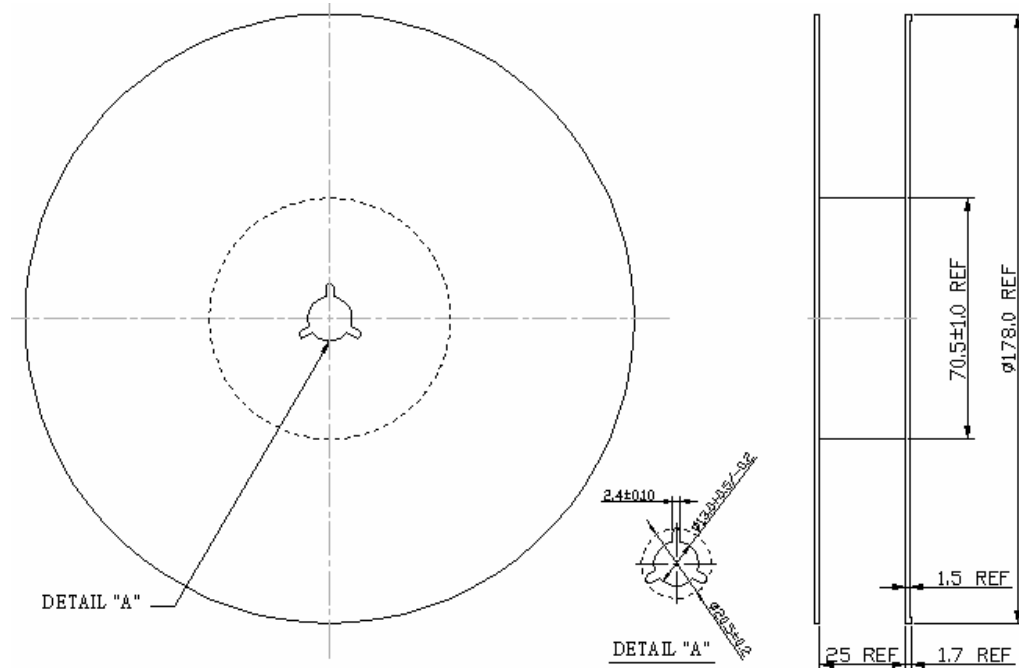


78.0MHz SAW Filter
Part No: MA09274

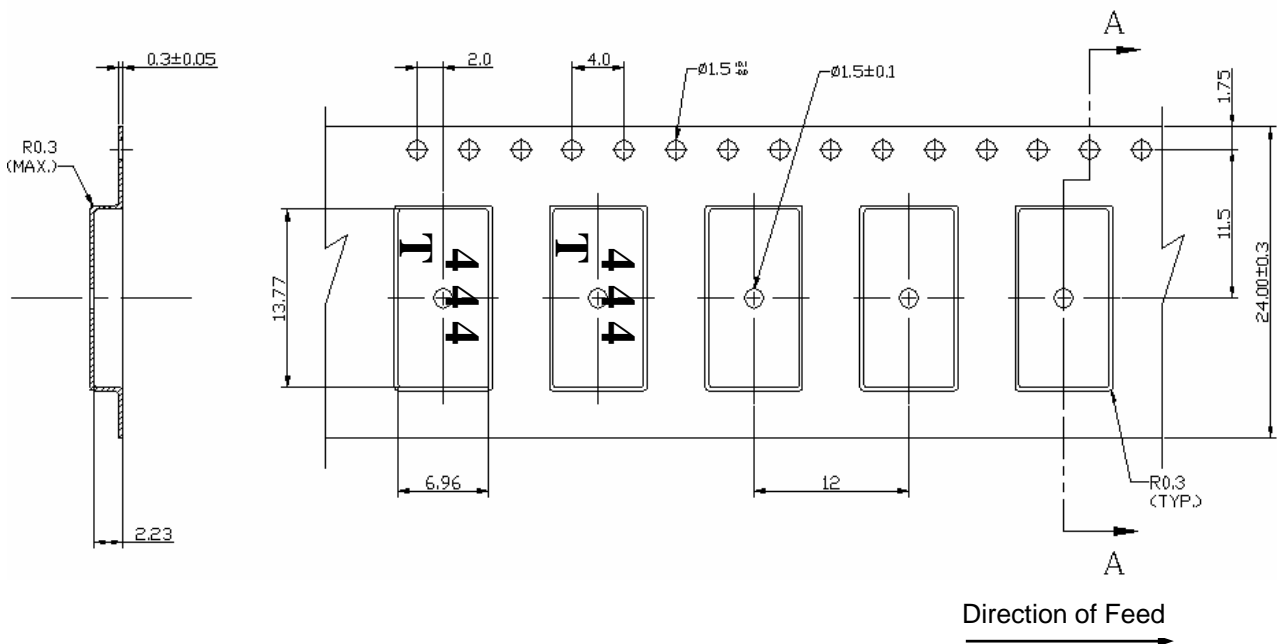
Model: TB0444A
REV NO.: 1

G. PACKING:

1. REEL DIMENSION



2. TAPE DIMENSION



78.0MHz SAW Filter

Model: TB0444A

Part No: MA09274

REV NO.: 1

H. RECOMMENDED REFLOW PROFILE :

