

**73.1250MHz SAW Filter**

Model: **TB0259A**

Part No: **MA09051**

REV NO.: 1

**A. MAXIMUM RATING:**

1. Input Power Level: 15 dBm
2. DC Voltage : 5V
3. Operating Temperature: -30°C to 85°C
4. Storage Temperature: -40°C to 100°C

**B. ELECTRICAL CHARACTERISTICS:**

Item	Unit	Min.	Type.	Max.	Note
Center frequency, <b>Fc</b>	MHz	-	73.125	-	-
Insertion Loss at <b>Fc</b> (-30 to +85°C) <b>IL</b>	dB	-	3	8	-
Insertion Loss at <b>Fc</b> (-10 to +65°C) <b>IL</b>			2.7	5.5	
Passband Ripple ( <b>Fc</b> ±7.5KHz )	dB	-	±0.1	±0.3	-
Absolute Group Delay at <b>Fc</b>	μ s	-	16	25	-
Group Delay Variation ( <b>Fc</b> ±7.5KHz ), <b>GD</b>	μ s	-	1.5	10	-
Attenuation:(Ref level from Min IL)					
<b>Fc</b> - 10 to <b>Fc</b> - 0.095 MHz	dB	20	54	-	-
<b>Fc</b> - 0.095 to <b>Fc</b> - 0.05 MHz	dB	10	23	-	-
<b>Fc</b> + 0.05 to <b>Fc</b> + 0.095 MHz	dB	10	23	-	-
<b>Fc</b> + 0.095 to <b>Fc</b> + 10 MHz	dB	20	42	-	-

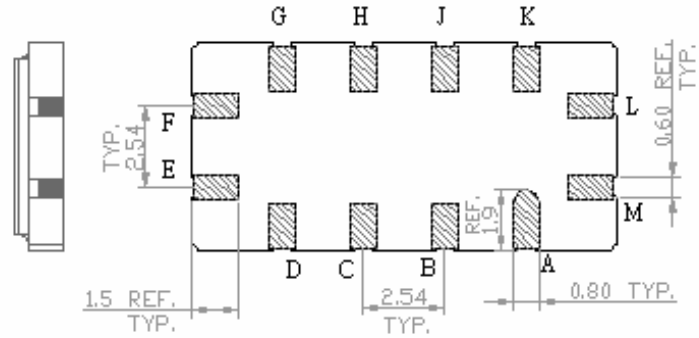
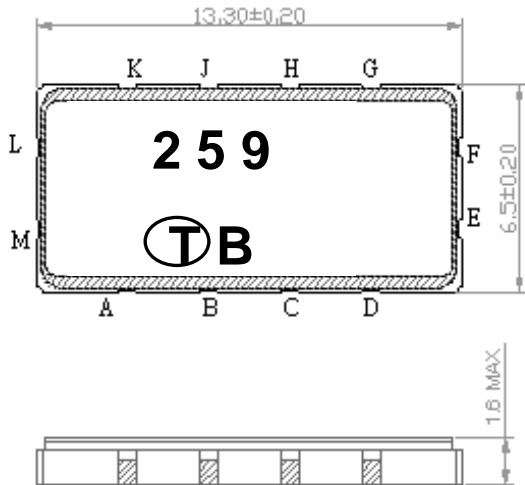
**73.1250MHz SAW Filter**

**Model: TB0259A**

**Part No: MA09051**

**REV NO.: 1**

**C. OUTLINE DRAWING:**

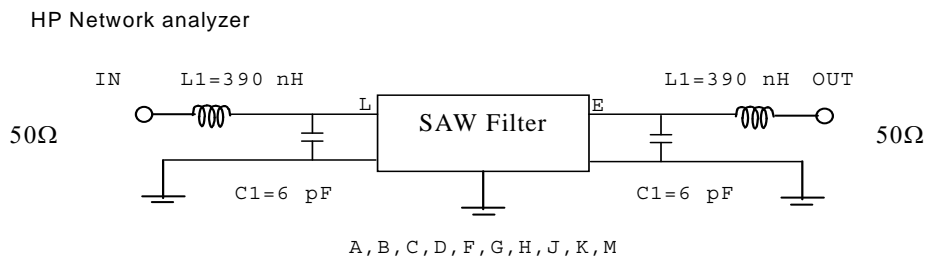


**Pin configuration**

- #L Input
  - #M Input RF-Return
  - #E Output
  - #F Output RF-Return
  - #A,B,C,D,G,H,J,K To be grounded
- Unit mm

**D. MEASUREMENT CIRCUIT:**

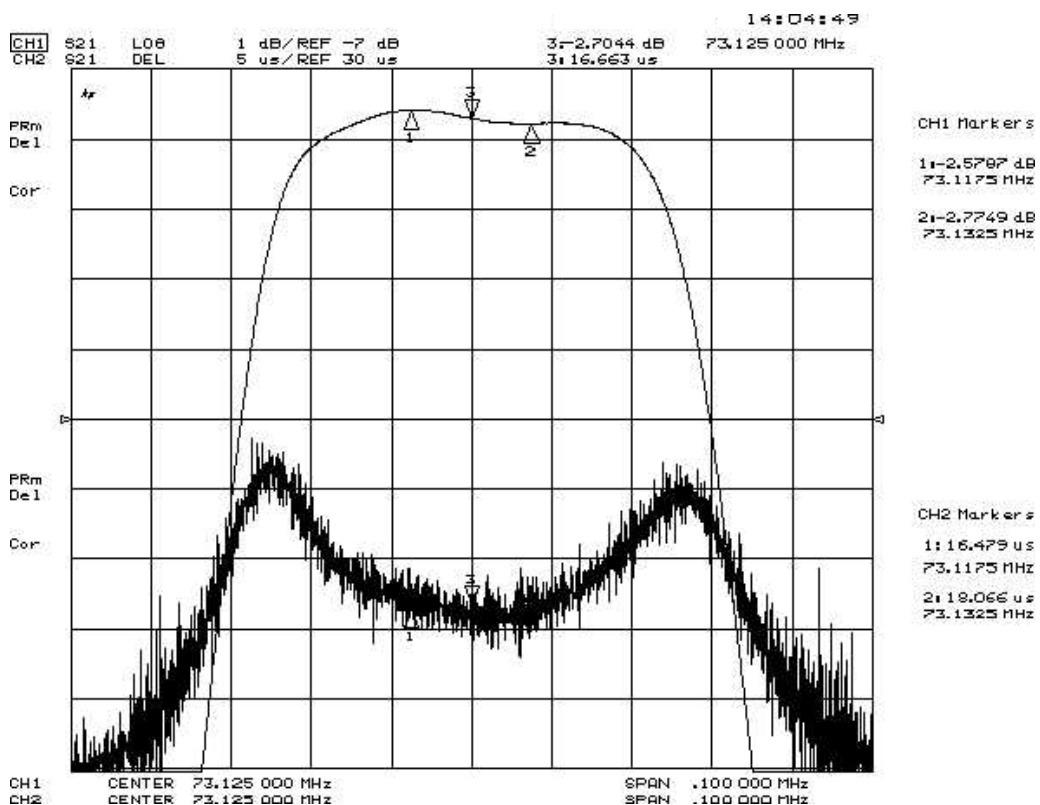
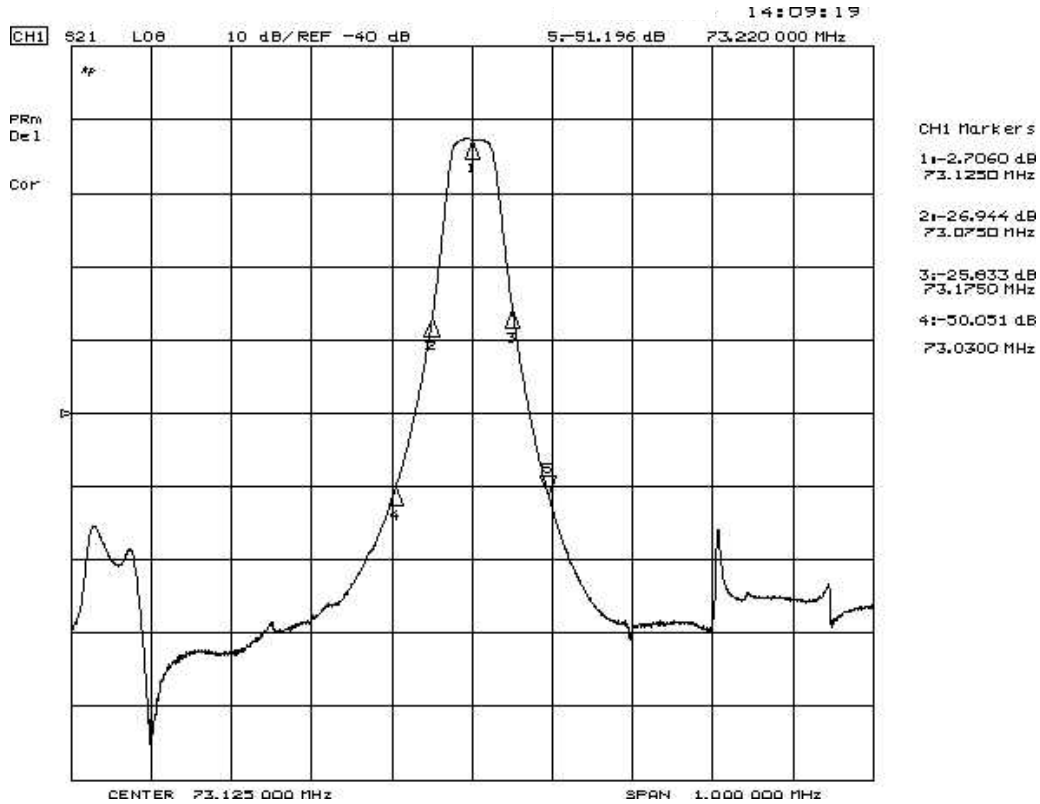
**50 Ohm Test circuit ( single-ended / single-ended )**



**73.1250MHz SAW Filter**  
**Part No: MA09051**

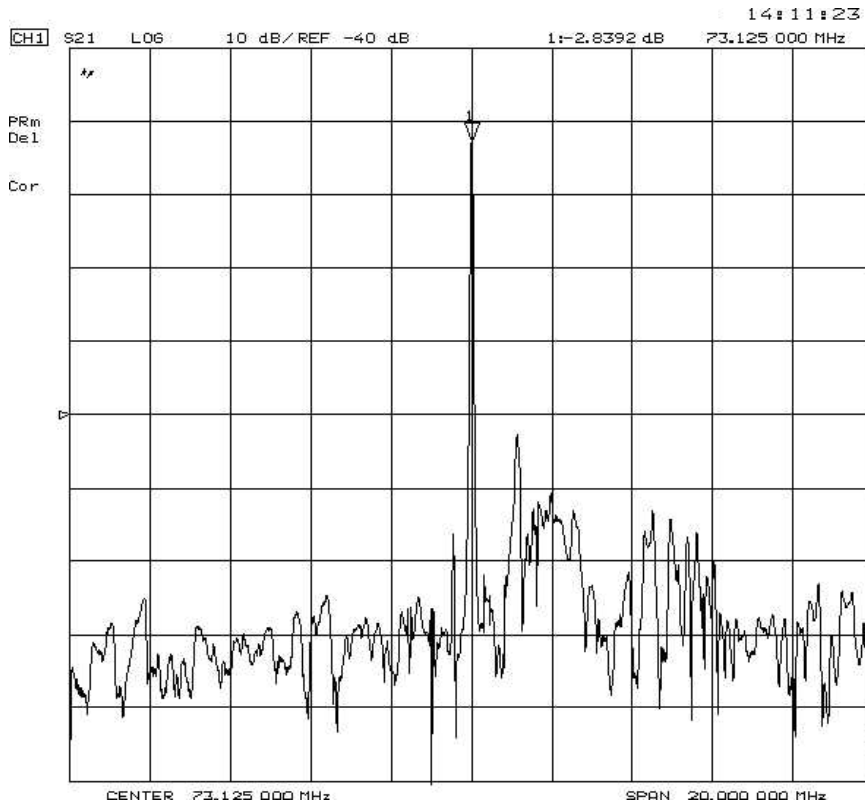
**Model: TB0259A**  
**REV NO.: 1**

**E. FREQUENCY CHARACTERISTICS:**

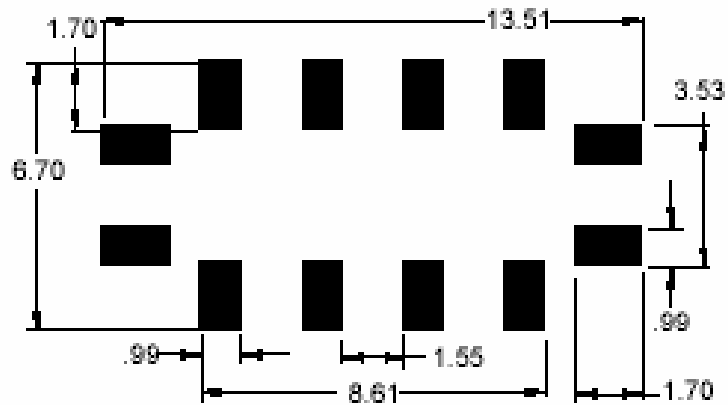


**73.125MHz SAW Filter**  
**Part No: MA09051**

**Model: TB0259A**  
**REV NO.: 1**



**F. PCB FOOTPRINT:**



**73.1250MHz SAW Filter**

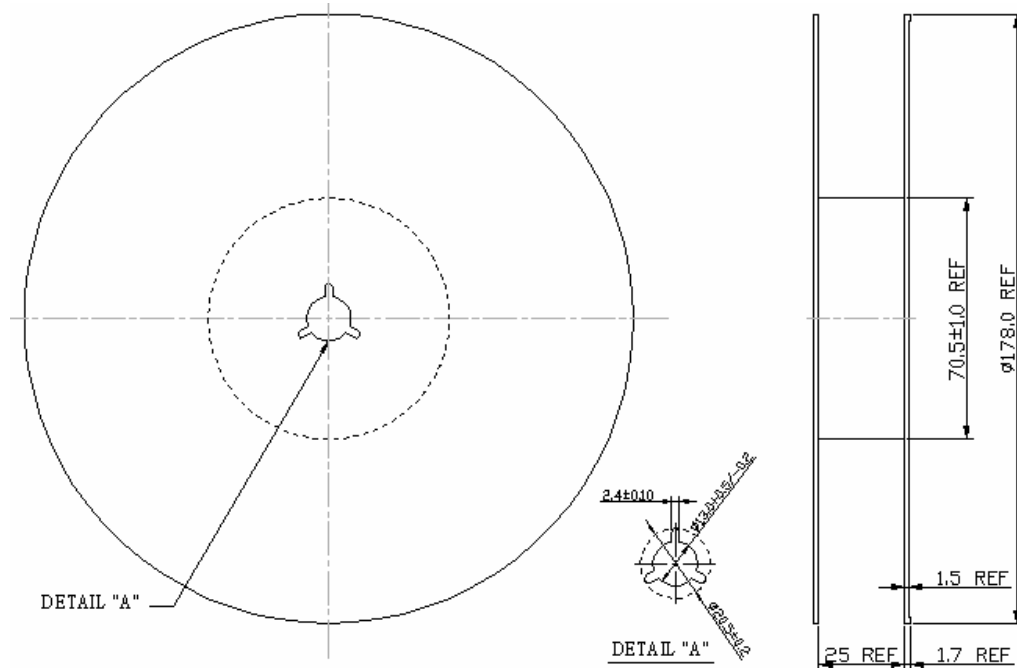
**Model: TB0259A**

**Part No: MA09051**

**REV NO.: 1**

**G. PACKING:**

**1. REEL DIMENSION**



**2. TAPE DIMENSION**

