

SAW Filter 40.0MHz

Model: TB0318A

Part No: MA08721

REV. NO.: 1

A. MAXIMUM RATING:

1. Input Power Level: 10 dBm
2. DC voltage: 5 V
3. Operating Temperature: -20°C to +85°C
4. Storage Temperature: -40°C to +85°C

B. ELECTRICAL CHARACTERISTICS:

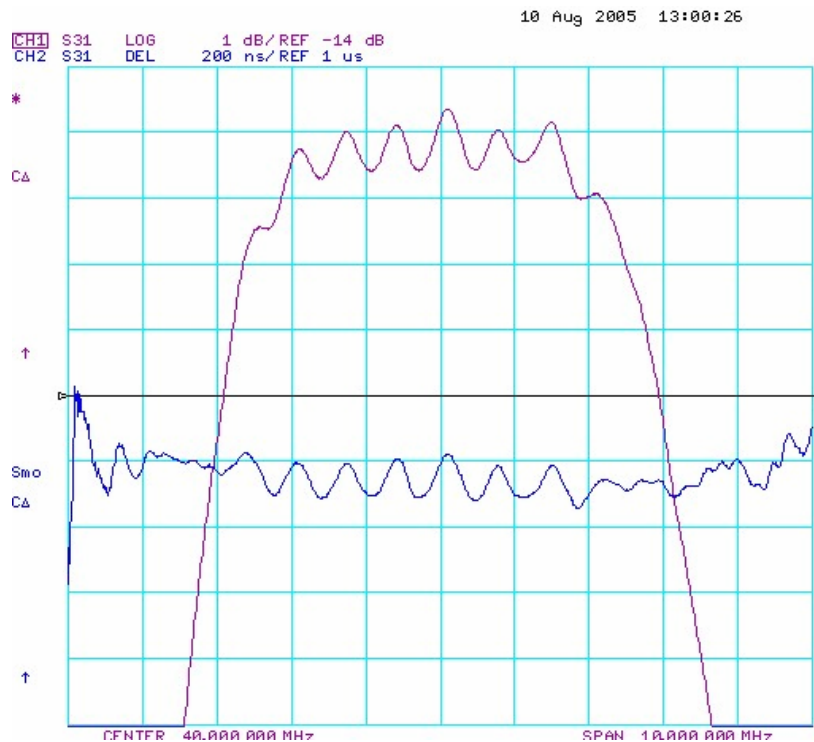
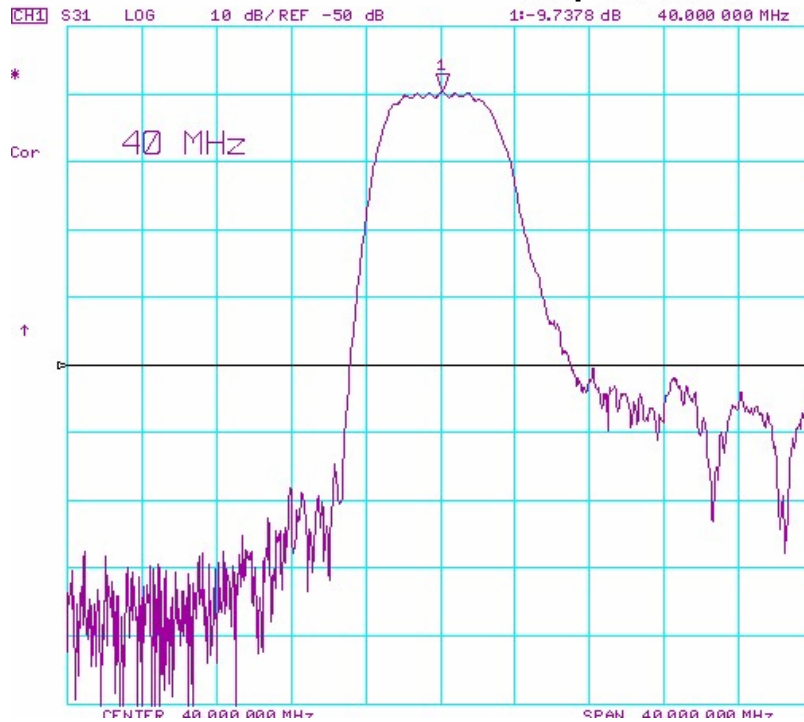
Item	Unit	Specification		
		Min.	Typ.	Max.
Center Frequency F_c	MHz	-	40	-
Insertion Loss IL_{min} dB	dB	-	9.0	12.0
3dB Bandwidth	MHz	3.5	5.0	-
Passband Ripple ($F_c-1.75MHz \sim F_c+1.75MHz$)	dB		1.2	2.0
Group Delay Ripple ($F_c-1.75MHz \sim F_c+1.75MHz$)	nS		190	250
Stopband Attenuation(ref to IL_{min} dB)				
$F_c \pm 5MHz$	dB	20	35	-
27.5~32.5MHz	dB	31	42	-
47.5~52.5MHz	dB	31	42	-
0~30 MHz	dB	35	71	-
50~70 MHz	dB	35	43	-

Note: IL_{min} is the minimum of the pass band attenuation. The center frequency F_c is the mean value of the upper and lower frequencies at the 3dB filter attenuation level relative to the IL_{min} .

SAW Filter 40.0MHz
Part No: MA08721

Model: TB0318A
REV. NO.: 1

C. FREQUENCY CHARACTERISTICS:



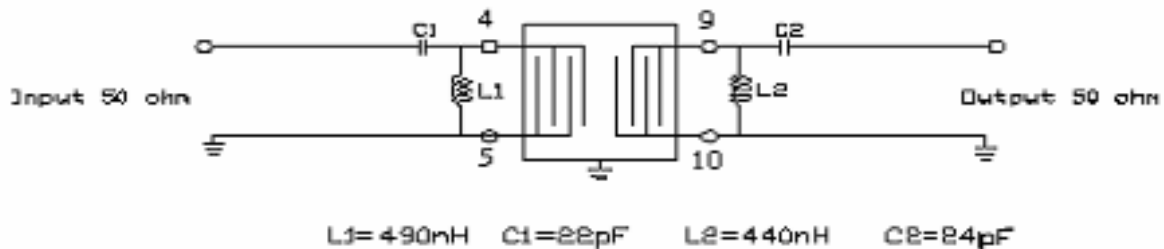
SAW Filter 40.0MHz

Model: TB0318A

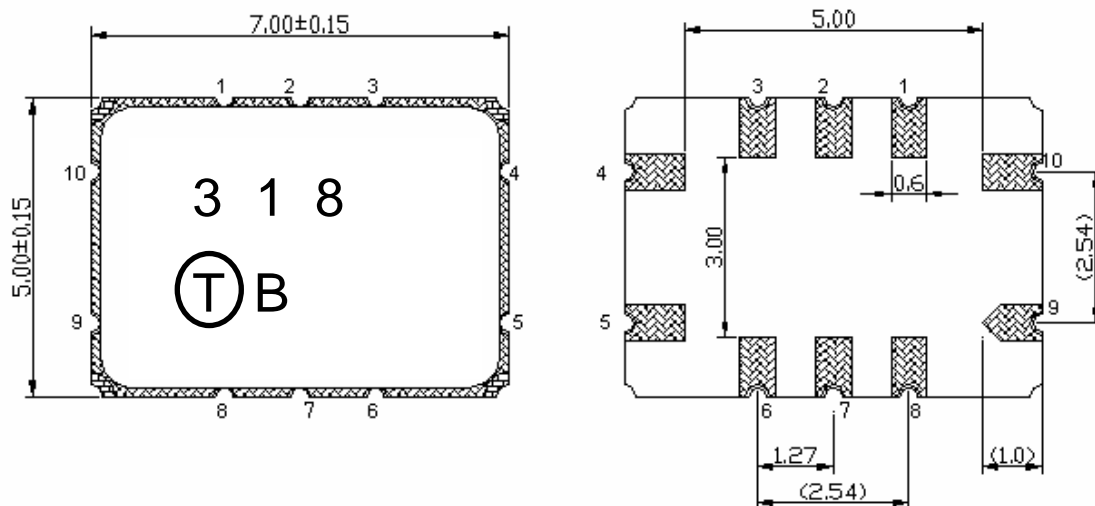
Part No: MA08721

REV. NO.: 1

D. MEASUREMENT CIRCUIT:



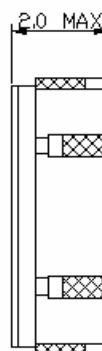
E. OUTLINE DRAWING:



Pin configuration:

- 4: RF Input or Balance Input
- 5: RF Input Ground or Balance Input
Return
- 9: RF Output or Balance Output
- 10: RF Output Ground or Balance
Output Return
- 1,2,3,6,7,8: Ground

Unit: mm



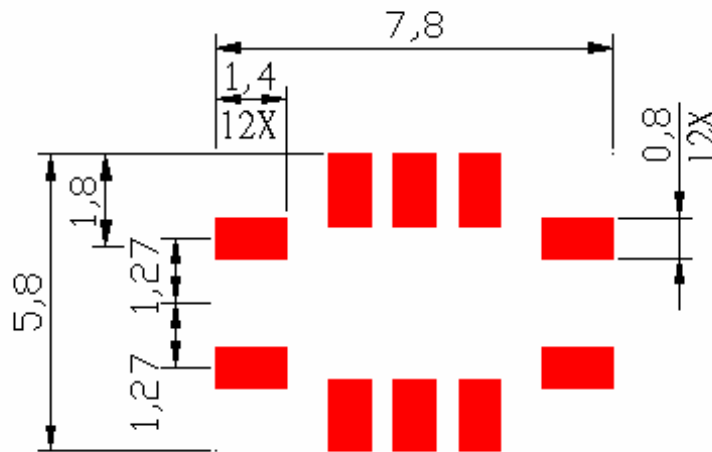
SAW Filter 40.0MHz

Model: TB0318A

Part No: MA08721

REV. NO.: 1

F. PCB FOOTPRINT:

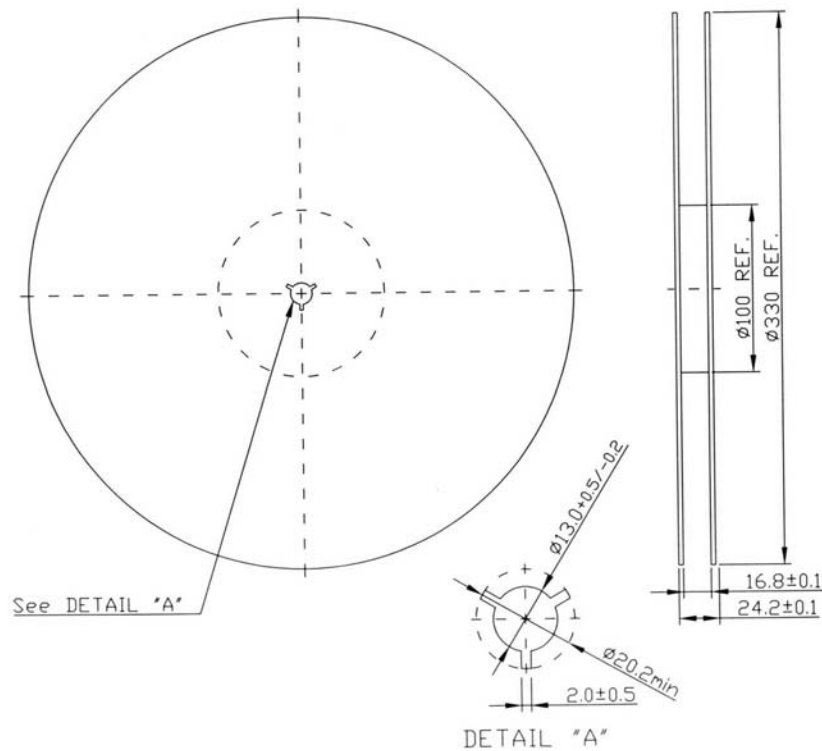


SAW Filter 40.0MHz
Part No: MA08721

Model: TB0318A
REV. NO.: 1

G. PACKING:

1. REEL DIMENSION



2. TAPE DIMENSION

