

SAW Resonator 1090.0MHz
Part No: MA08070

Model: TD0116A
REV. NO.: 3

A. FEATURES:

1. 2-Port Resonator.

B. MAXIMUM RATING:

1. Input Power Level: 3 dBm
2. DC voltage: 12 V
3. Operating Temperature: -40°C to +85°C
4. Storage Temperature: -40°C to +85°C

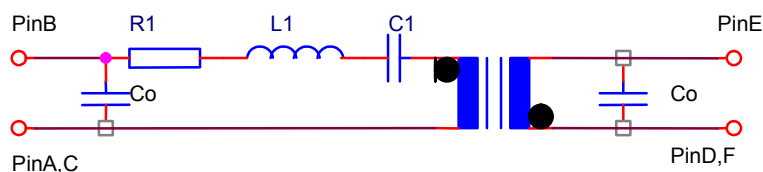
C. ELECTRICAL CHARACTERISTICS:

Reference Temperature $T_A=25^\circ\text{C}$

Characteristic	Units	Minimum	Typical	Maximum
Center frequency F_r	MHz	1089.800	1090	1090.200
Insertion Loss IL	dB	-	10	12.5
Unloaded Quality factor		-	4700	-
Ageing of F_c	ppm	-	-	10/year
Equivalent Elements				
Motional capacitance C_1	fF	-	0.18	-
Motional inductance L_1	μH	-	114	-
Motional resistance R_1	Ohm	-	178	-
Parallel capacitance C_o	pF	-	1.5	-
Temp.coeff.	ppm/c*2	-	0.032	-
Turnover T_o	deg.C	-	25	-
Package size		SMD 3.8X3.8X1.4mm		

D. EQUIVALENT CIRCUIT:

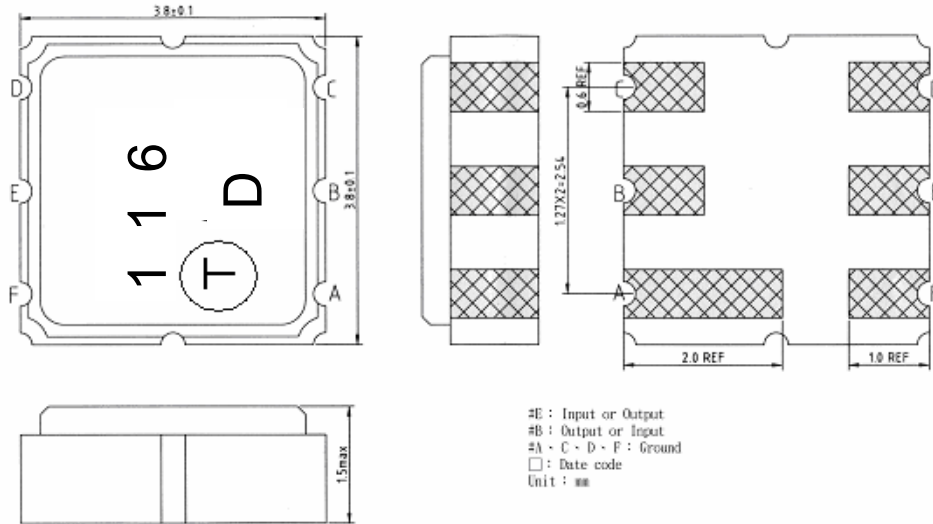
Two-Port Resonator:



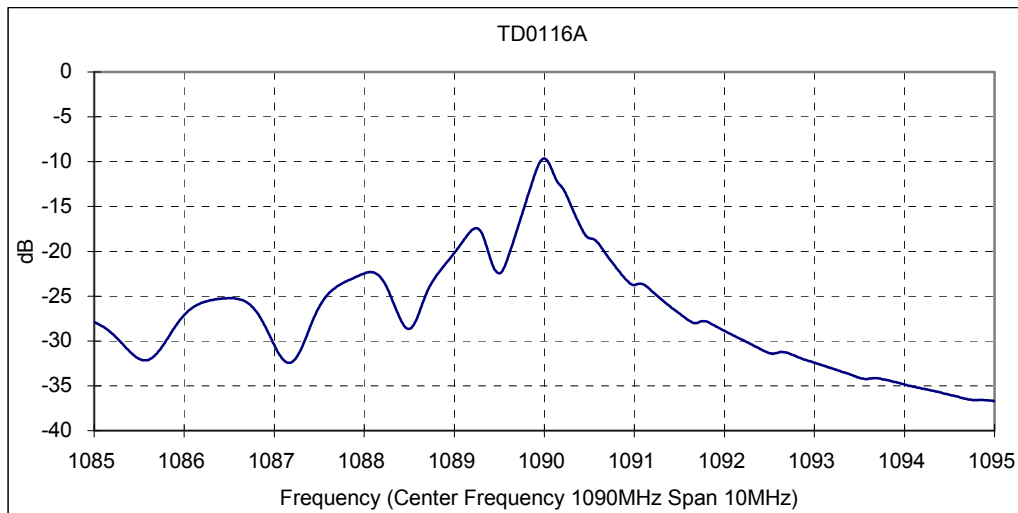
SAW Resonator 1090.0MHz
Part No: MA08070

Model: TD0116A
REV. NO.: 3

E. OUTLINE DRAWING:



F. FREQUENCY CHARACTERISTICS:

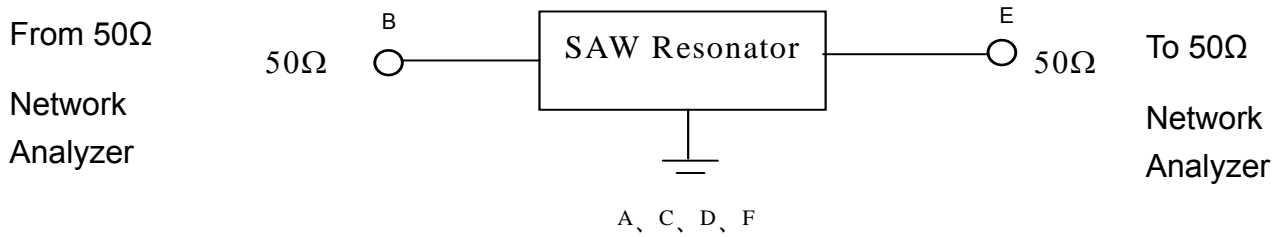


SAW Resonator 1090.0MHz
Part No: MA08070

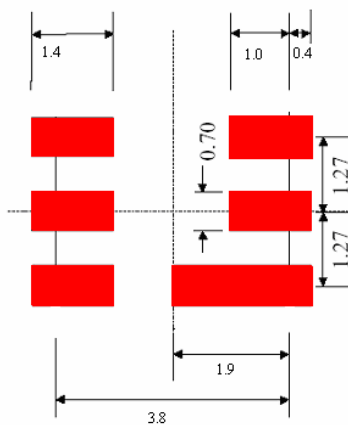
Model: TD0116A
REV. NO.: 3

G. TEST CIRCUIT:

Network analyzer



H. PCB FOOTPRINT

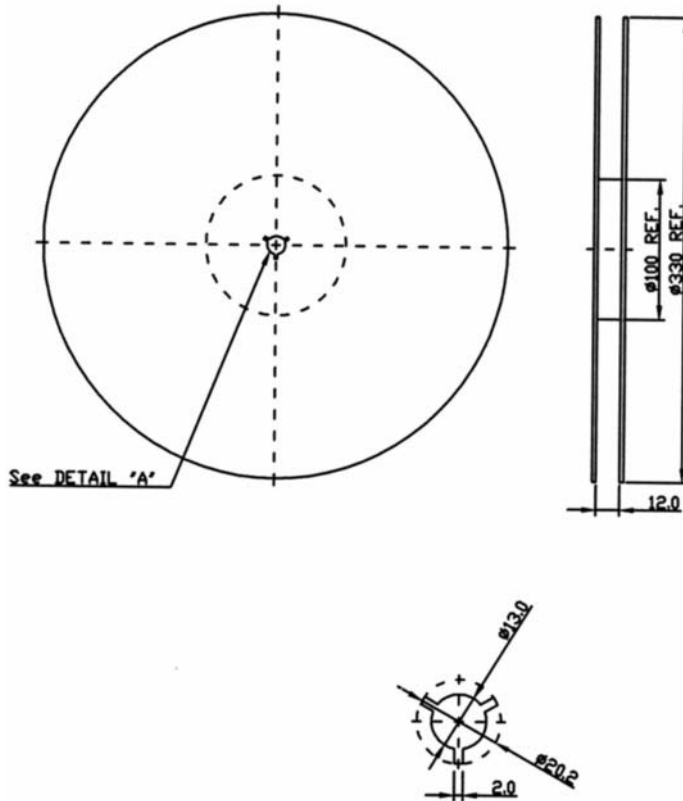


SAW Resonator 1090.0MHz
Part No: **MA08070**

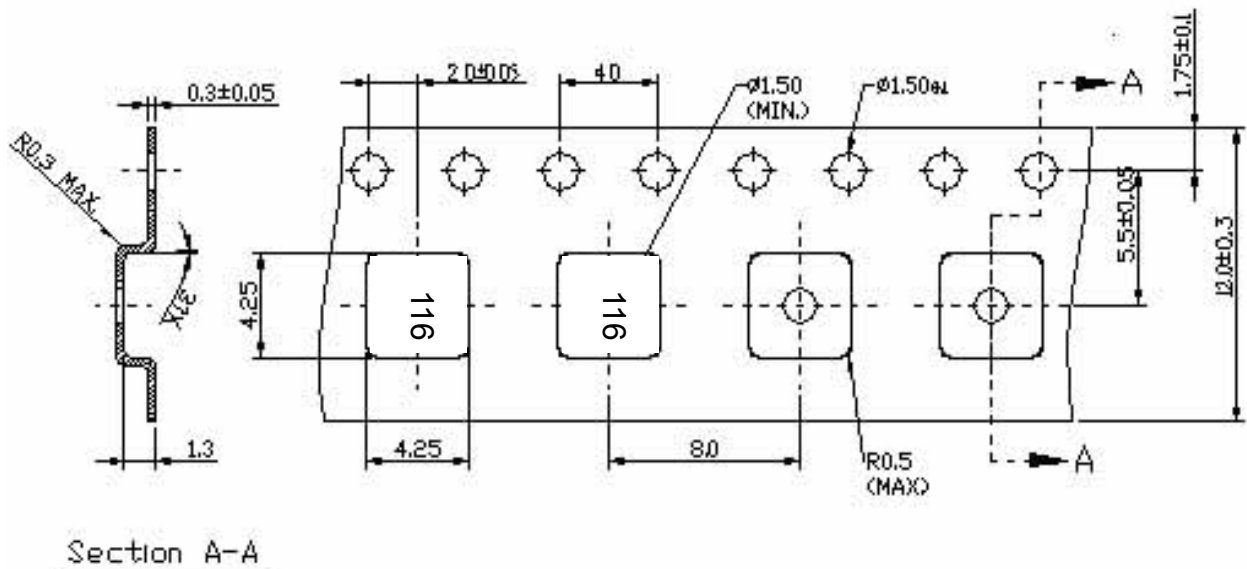
Model: TD0116A
REV. NO.: 3

I. PACKING:

1. REEL DIMENSION



2. TAPE DIMENSION



SAW Resonator 1090.0MHz
Part No: MA08070

Model: TD0116A
REV. NO.: 3

J. REFLOW PROFILE

