

**SAW Filter 426.1MHz**  
**Part No: MA07760**

**Model: TA0192A**  
**Rev No: 1**

**A. MAXIMUM RATING:**

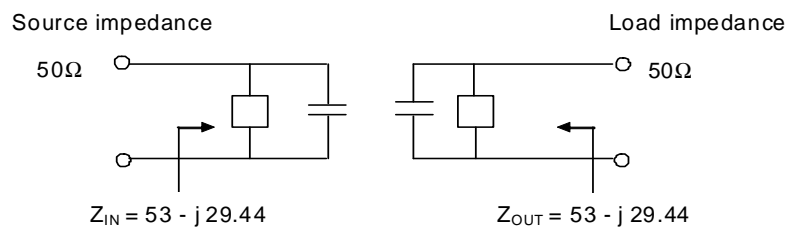
1. Input Power Level: 10dBm
2. DC voltage: 0V
3. Operating Temperature: -10°C to +60°C
4. Storage Temperature: -20°C to +75°C

**B. ELECTRICAL CHARACTERISTICS:**

Characteristics	Min.	Typ.	Max.
Center frequency Fc (dB)	-	426.1	-
Insertion loss (within 426.012 ~ 426.150MHz) IL (dB)	-	2.5	3.5
Ripple Deviation (p-p) (within 426.012 ~ 426.150MHz) (dB)	-	0.1	1.5
Absolute Attenuation			
Within 382.012 ~ 384.150MHz (dB)	50.0	68.0	-
Within 468.012 ~ 470.150MHz (dB) (Plus Image Frequency)	50.0	68.0	-
Source impedance $Z_S$ ( $\Omega$ )	-	53 - j 29.44	-
Load impedance $Z_L$ ( $\Omega$ )	-	53 - j 29.44	-

Note 1: The standard definitions is in JIS C 6703

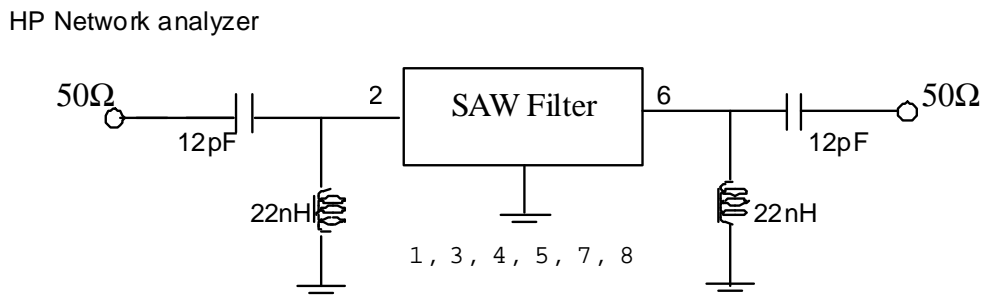
Note 2:



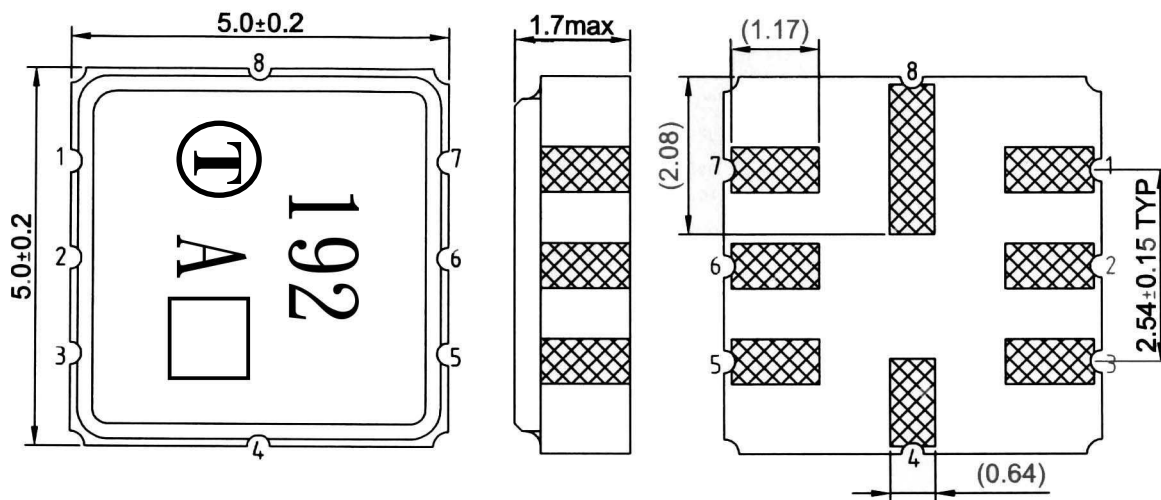
**SAW Filter 426.1MHz**  
**Part No: MA07760**

**Model: TA0192A**  
**Rev No: 1**

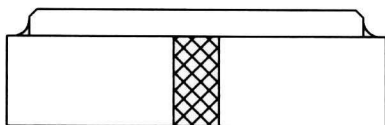
**C. MEASUREMENT CIRCUIT:**



**D. OUTLINE DRAWING:**



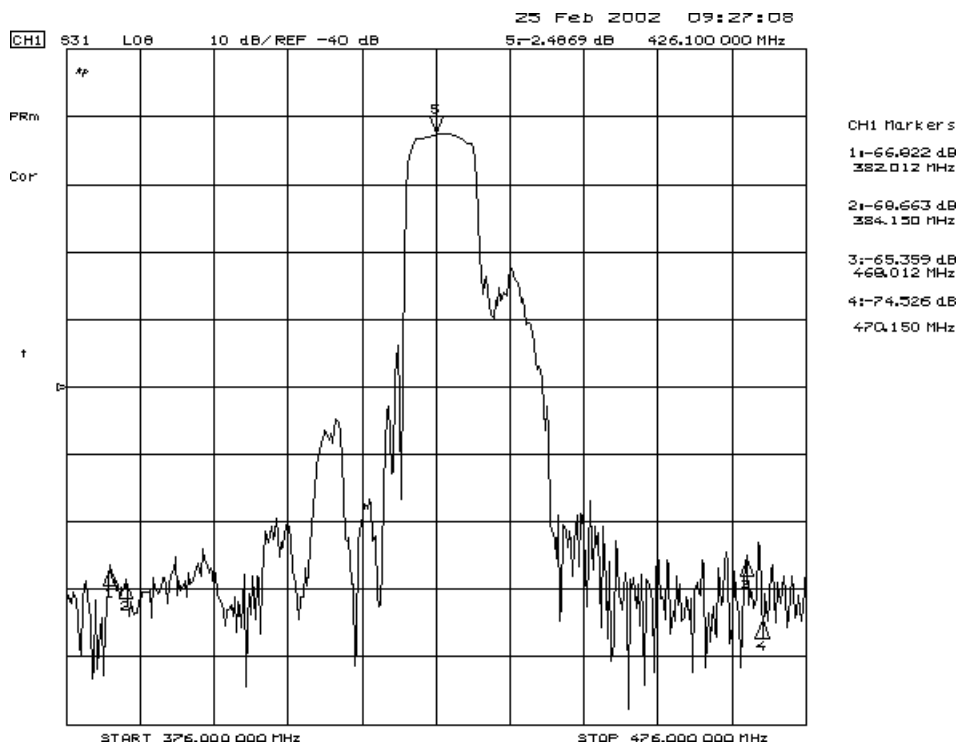
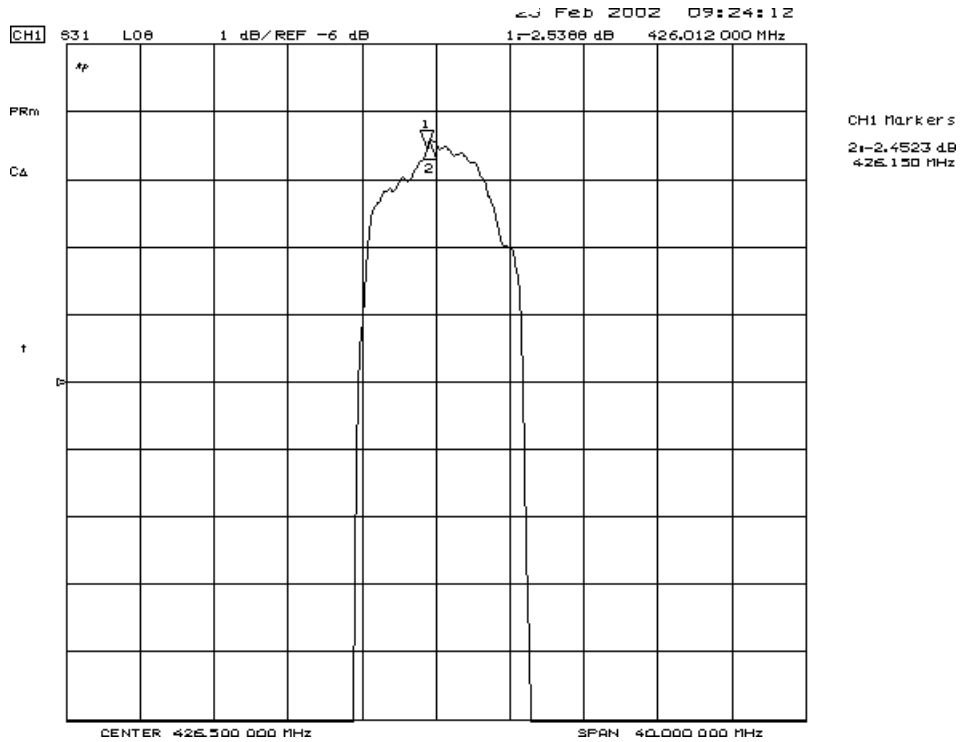
- #2 : Input
  - #6 : Output
  - #1、3、5、7 : Ground
  - #4、8 : Case Ground
  - : Date code
- Unit : mm



**SAW Filter 426.1MHz**  
**Part No: MA07760**

**Model: TA0192A**  
**Rev No: 1**

**E. FREQUENCY CHARACTERISTICS:**

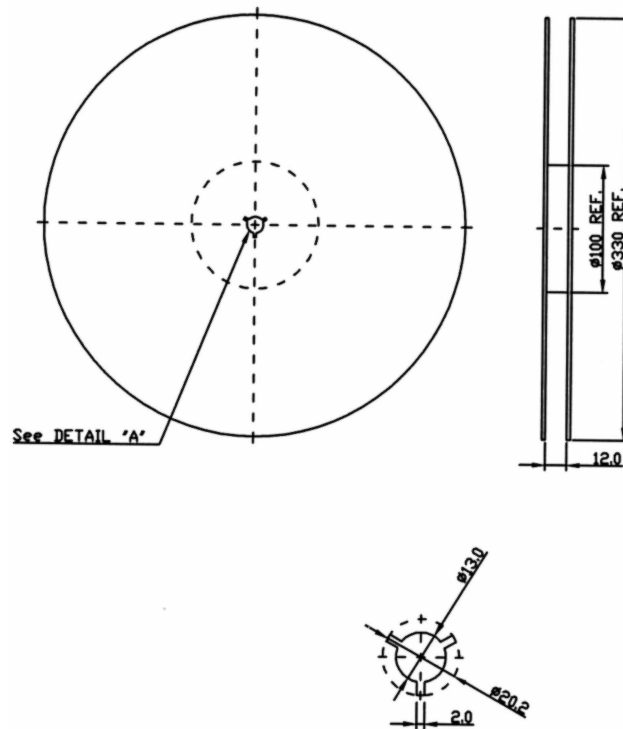


**SAW Filter 426.1MHz**  
**Part No: MA07760**

**Model: TA0192A**  
**Rev No: 1**

**F. PACKING:**

1. REEL DIMENSION



2. TAPE DIMENSION

