

**SAW Filter 343.5MHz**  
**Part No: MA07746**

**Model: TA0188A**  
**Rev No: 1**

**A. MAXIMUM RATING:**

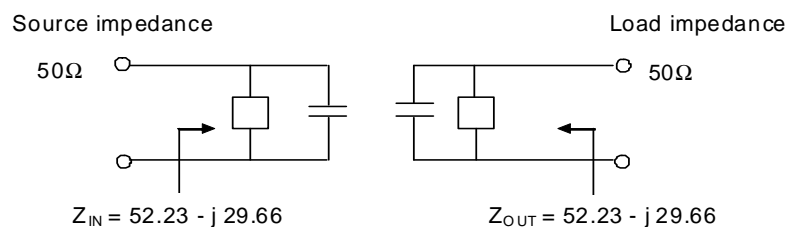
1. Input Power Level: 10dBm
2. DC voltage: 0V
3. Operating Temperature: -10°C to +50°C
4. Storage Temperature: -40°C to +85°C

**B. ELECTRICAL CHARACTERISTICS:**

Characteristics	Min.	Typ.	Max.
Center frequency Fc (dB)	-	343.5	-
Insertion loss within 341.5 ~ 345.5MHz IL (dB)	-	3.1	4.0
Amplitude ripple (p-p) within 341.5 ~ 345.5MHz (dB)	-	0.9	2.0
Attenuation (Reference level from 0dB)			
Fc -40 to -9MHz (dB)	30.0	43.0	-
Fc +9 to +40MHz (dB)	15.0	25.5	-
Fc -100 to -40MHz (dB)	50.0	65.0	-
Fc +40 to +100MHz (dB)	50.0	68.0	-
Source impedance Z <sub>S</sub> (Ω)	-	52.23 - j 29.66	-
Load impedance Z <sub>L</sub> (Ω)	-	52.23 - j 29.66	-

Note1: The standard definitions is in JIS C 6703

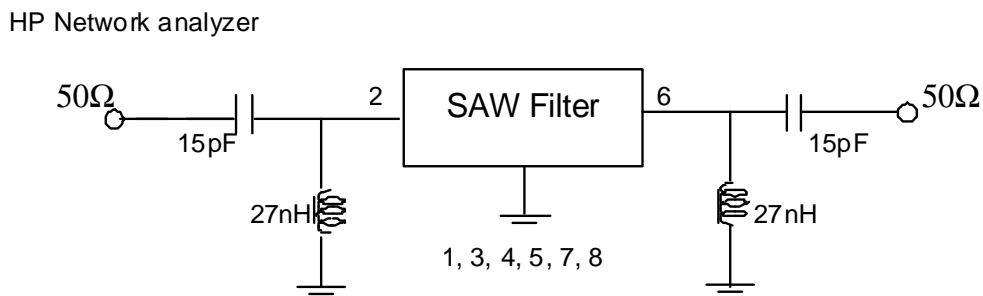
Note2:



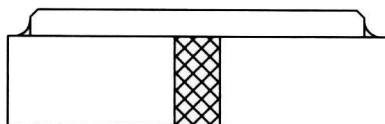
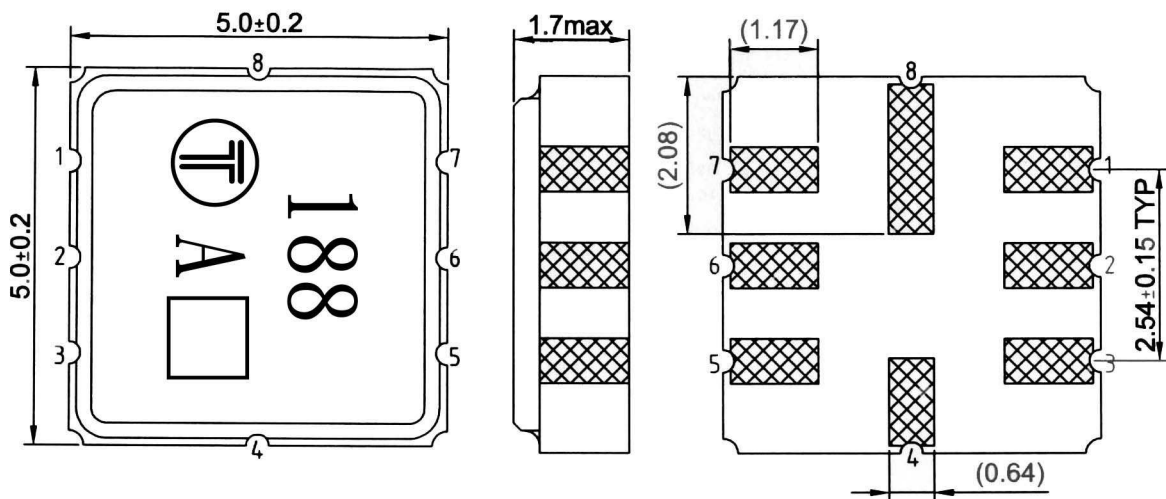
**SAW Filter 343.5MHz**  
**Part No: MA07746**

**Model: TA0188A**  
**Rev No: 1**

**C. MEASUREMENT CIRCUIT:**



**D. OUTLINE DRAWING:**

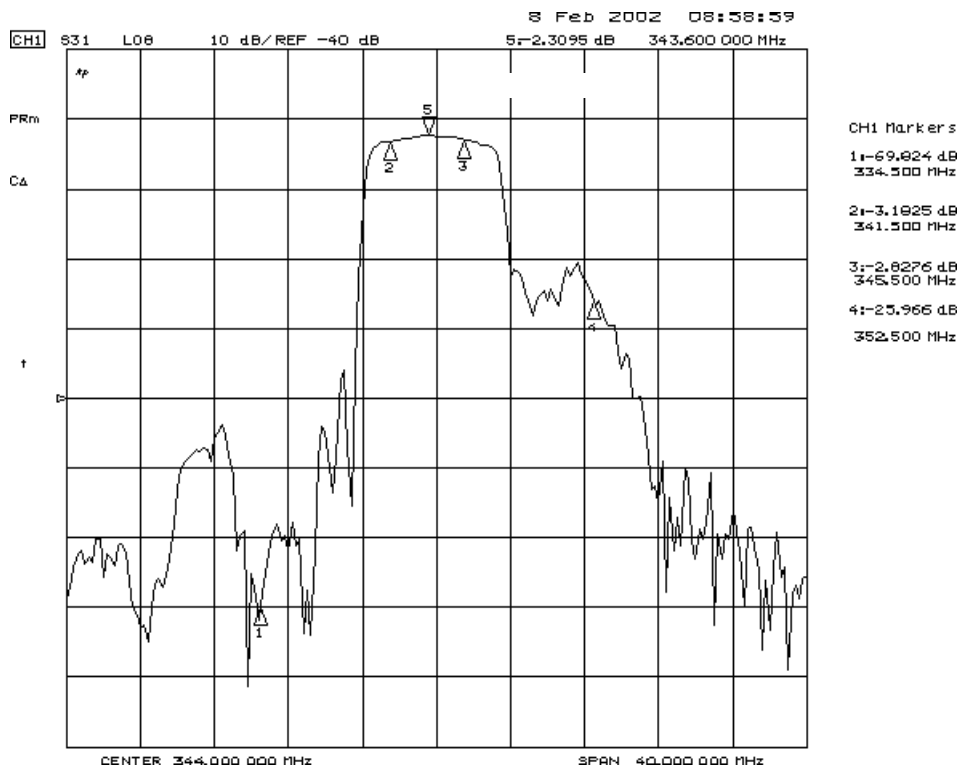
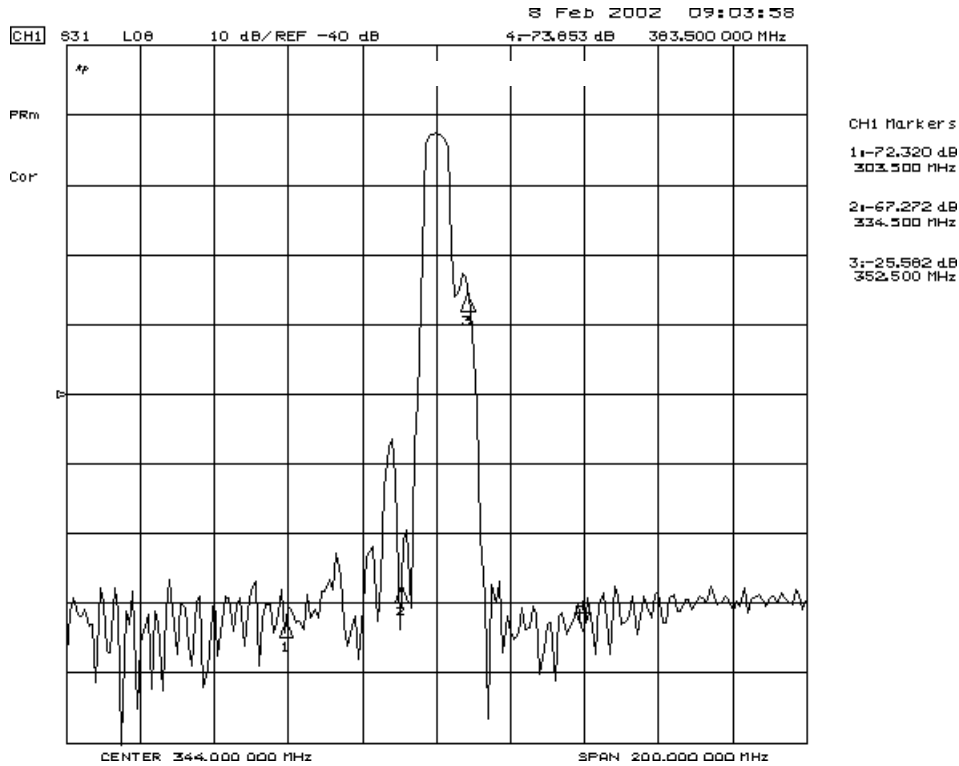


- #2 : Input
- #6 : Output
- #1、3、5、7 : Ground
- #4、8 : Case Ground
- : Date code
- Unit : mm

**SAW Filter 343.5MHz**  
**Part No: MA07746**

**Model: TA0188A**  
**Rev No: 1**

**E. FREQUENCY CHARACTERISTICS:**

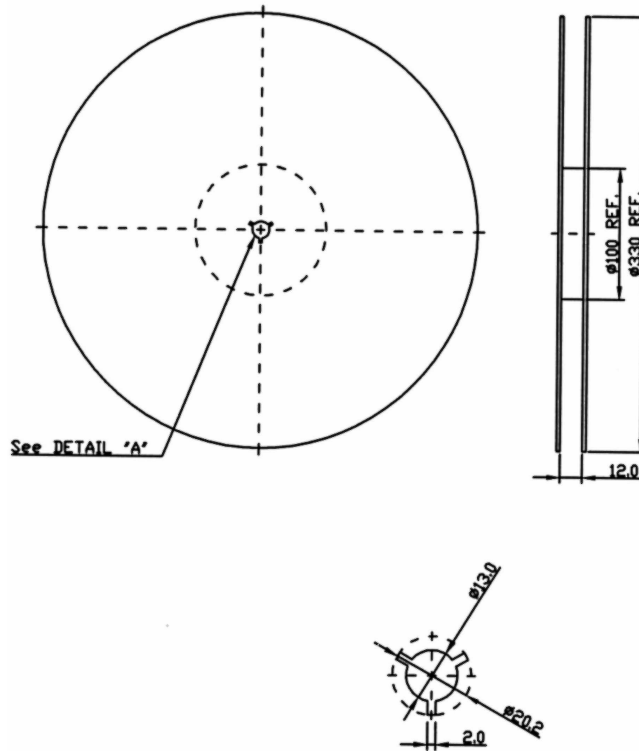


**SAW Filter 343.5MHz**  
**Part No: MA07746**

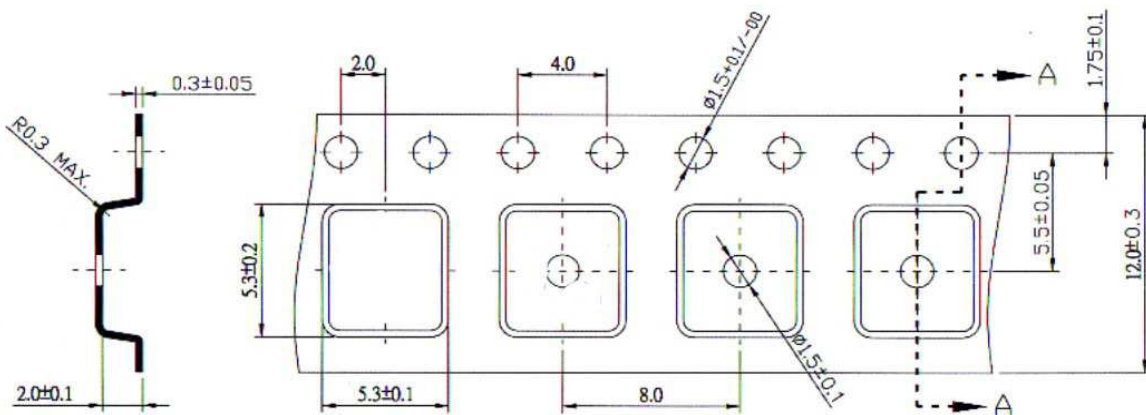
**Model: TA0188A**  
**Rev No: 1**

**F. PACKING:**

1. REEL DIMENSION



2. TAPE DIMENSION



Section A-A