

**SAW Filter 427.80MHz**

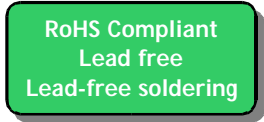
**Model: TA0527A**

Part No: **MA07612**

REV. NO.: 1

**A. MAXIMUM RATING:**

1. Input Power Level: 10 dBm
2. DC voltage: 3 V
3. Operating Temperature: +15°C to +35°C
4. Storage Temperature: -40°C to +85°C



**B. ELECTRICAL CHARACTERISTICS:**

Balanced to Balanced operation

Terminating source impedance :  $Z_s = 200\Omega$

Terminating load impedance :  $Z_L = 200\Omega$

Item		Min.	Typical	Max.
Center frequency	Fc MH	-	427.8	-
Insertion loss	425.3 ~ 430.3 MHz IL dB	-	2.05	3.6
Amplitude ripple	425.3 ~ 430.3 MHz dB	-	0.65	2.1
VSWR	425.3 ~ 430.3 MHz dB	-	1.6	2.2
Attenuation (Reference level from 0 Db)				
1 ~ 391.0	MHz dB	40	55	-
391.0 ~ 406.5	MHz dB	31	56	-
406.5 ~ 417.9	MHz dB	10	40	-
461.0 ~ 481.0	MHz dB	35	60	-
481.0 ~ 555.0	MHz dB	40	62	-
Temperature coefficient of frequency	ppm/k	-	-36	-

**SAW Filter 427.80MHz**

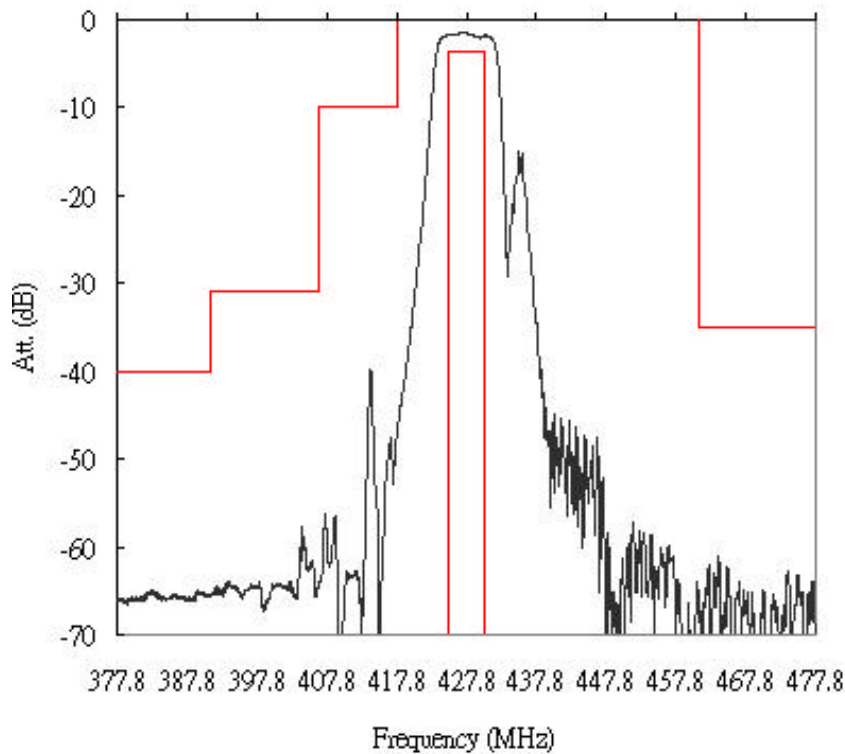
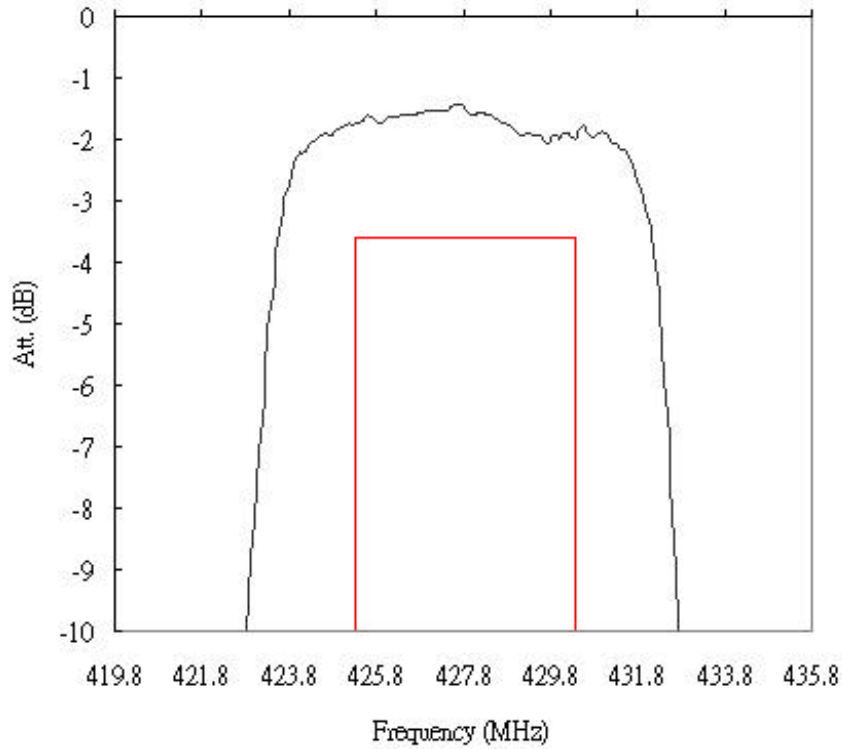
**Model: TA0527A**

**Part No: MA07612**

**REV. NO.: 1**

**C. FREQUENCY CHARACTERISTICS:**

**Transfer Function:**



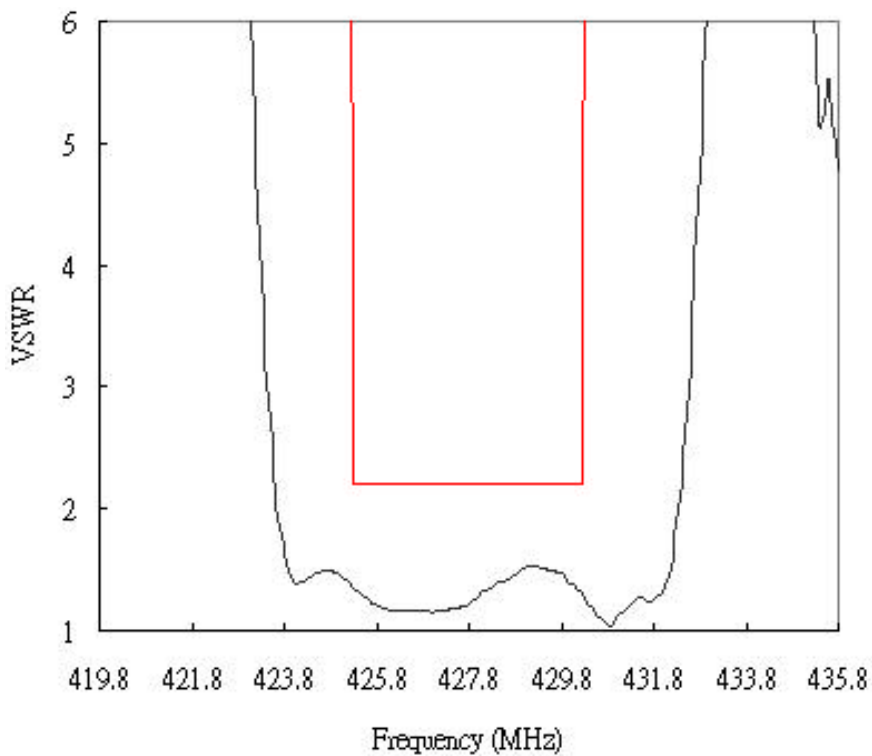
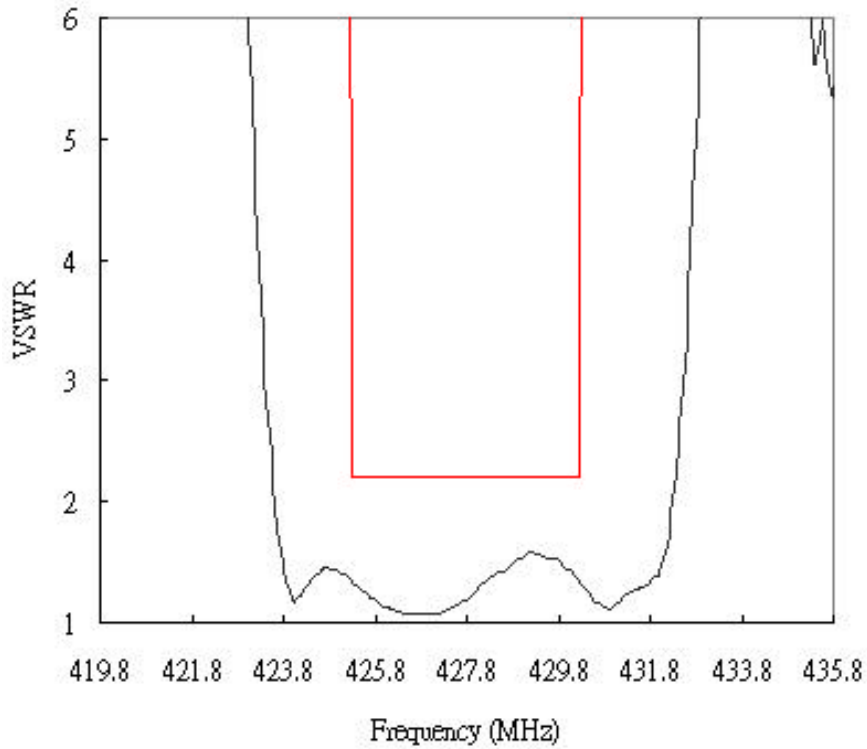
**SAW Filter 427.80MHz**

**Model: TA0527A**

**Part No: MA07612**

**REV. NO.: 1**

**Reflection Function:**



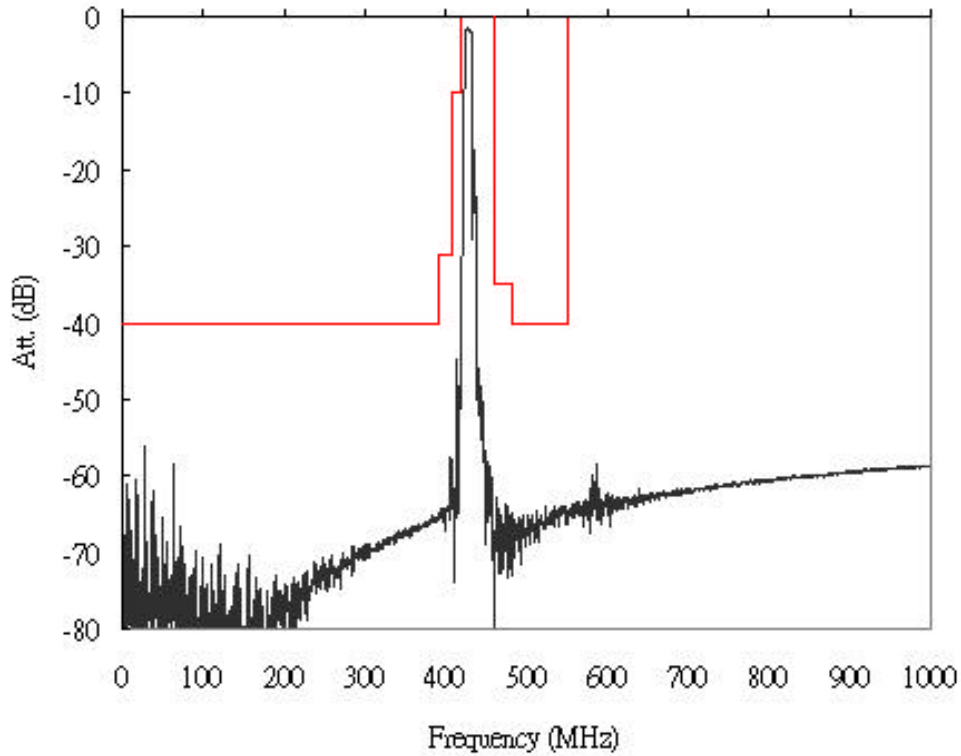
**SAW Filter 427.80MHz**

**Model: TA0527A**

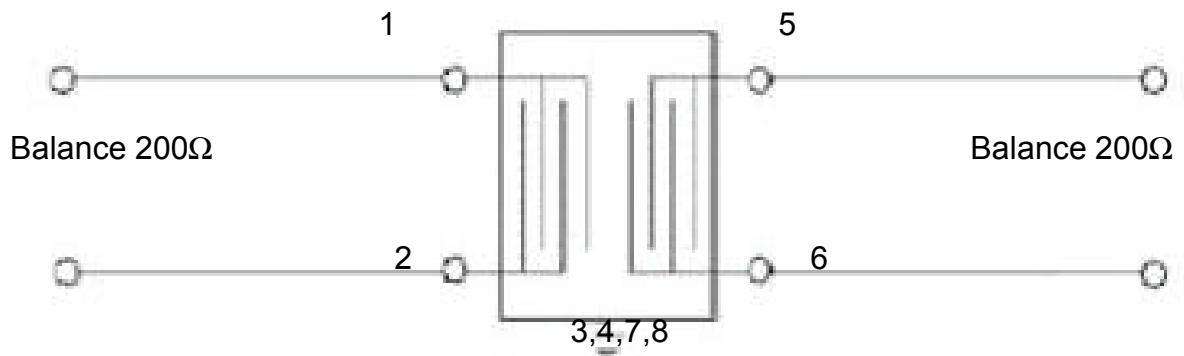
**Part No: MA07612**

**REV. NO.: 1**

**Wideband**



**D. MEASUREMENT CIRCUIT:**



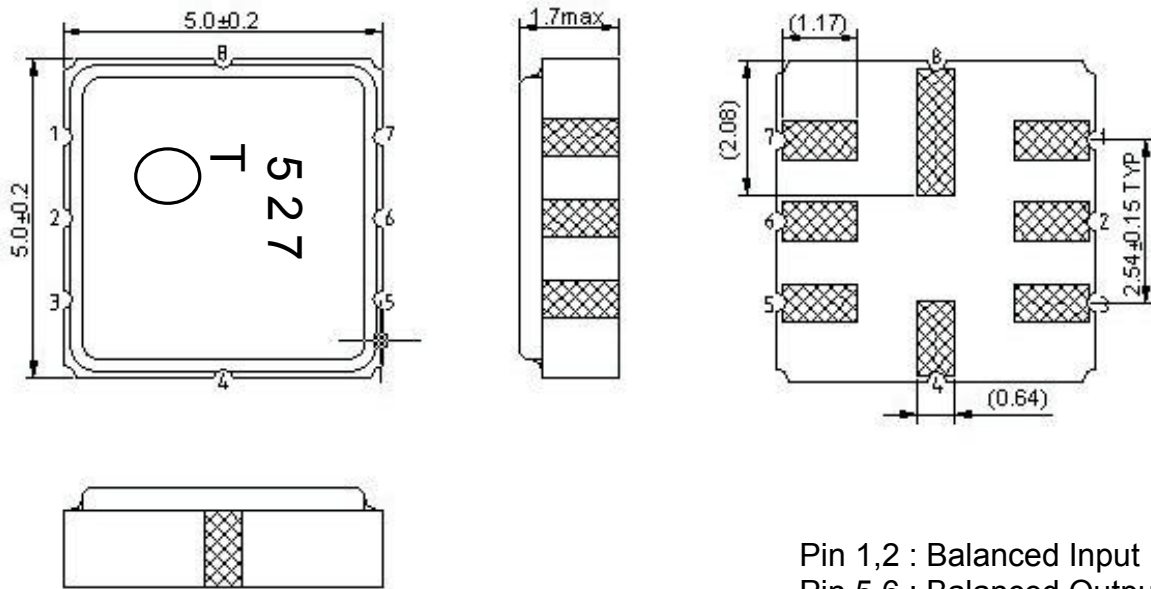
**SAW Filter 427.80MHz**

**Model: TA0527A**

**Part No: MA07612**

**REV. NO.: 1**

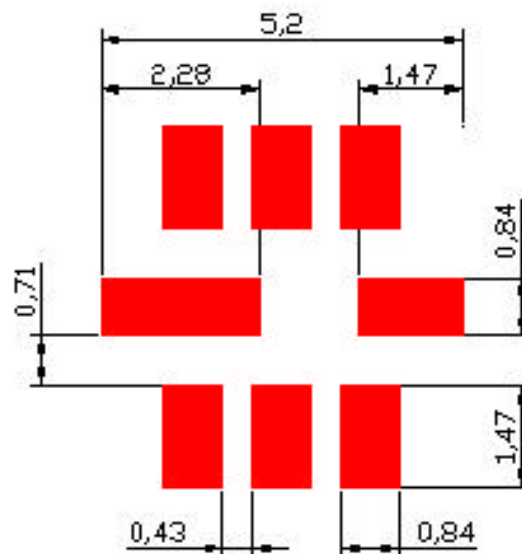
**E. OUTLINE DRAWING:**



Pin 1,2 : Balanced Input  
 Pin 5,6 : Balanced Output  
 Pin 3,4,7,8 : Ground  
 Unit : mm

Year	2001	2002	2003	2004
	2005	2006	2007	2008
Year Code	<b>A</b>	<b>a</b>	<b>A</b>	<b>a</b>

**F. PCB FOOTPRINT:**



**SAW Filter 427.80MHz**

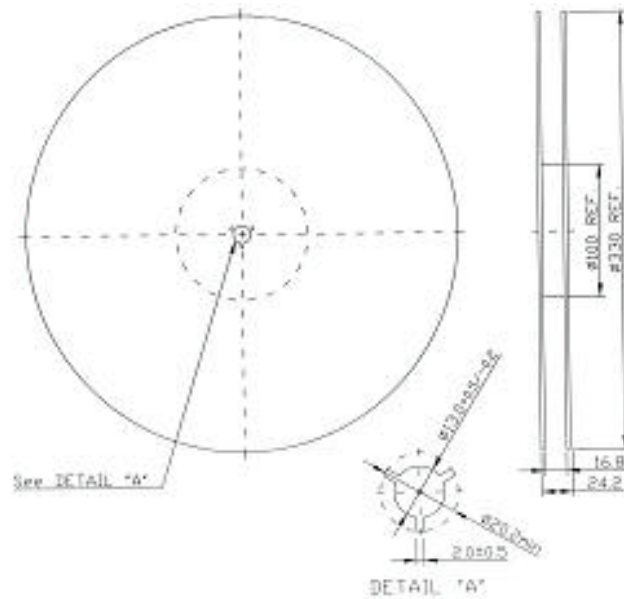
**Model: TA0527A**

**Part No: MA07612**

**REV. NO.: 1**

**G. PACKING:**

**1. REEL DIMENSION**



**2. TAPE DIMENSION**

