

**SAW Filter 415.40MHz**

**Model: TA0526A**

**Part No: MA07611**

**REV. NO.: 1**

**A. MAXIMUM RATING:**

1. Input Power Level: 10 dBm
2. DC voltage: 3 V
3. Operating Temperature: +15°C to +35°C
4. Storage Temperature: -40°C to +85°C

**B. ELECTRICAL CHARACTERISTICS:**

Balanced to Balanced operation

Terminating source impedance :  $Z_s = 200\Omega$

Terminating load impedance :  $Z_L = 200\Omega$

Item		Min.	Typical	Max.
Center frequency	Fc MH	-	415.4	-
Insertion loss	412.9 ~ 417.9 MHz IL dB	-	2.2	3.6
Amplitude ripple	412.9 ~ 417.9 MHz dB	-	0.65	2.1
VSWR	412.9 ~ 417.9 MHz dB	-	1.3	2.2
Attenuation (Reference level from 0 Db)				
1 ~ 379.0	MHz dB	40	58	-
379.0 ~ 394.0	MHz dB	35	55	-
394.0 ~ 405.0	MHz dB	10	40	-
437.0 ~ 476.0	MHz dB	36	53	-
476.0 ~ 550.0	MHz dB	40	55	-
Temperature coefficient of frequency	ppm/k	-	-36	-

**SAW Filter 415.40MHz**

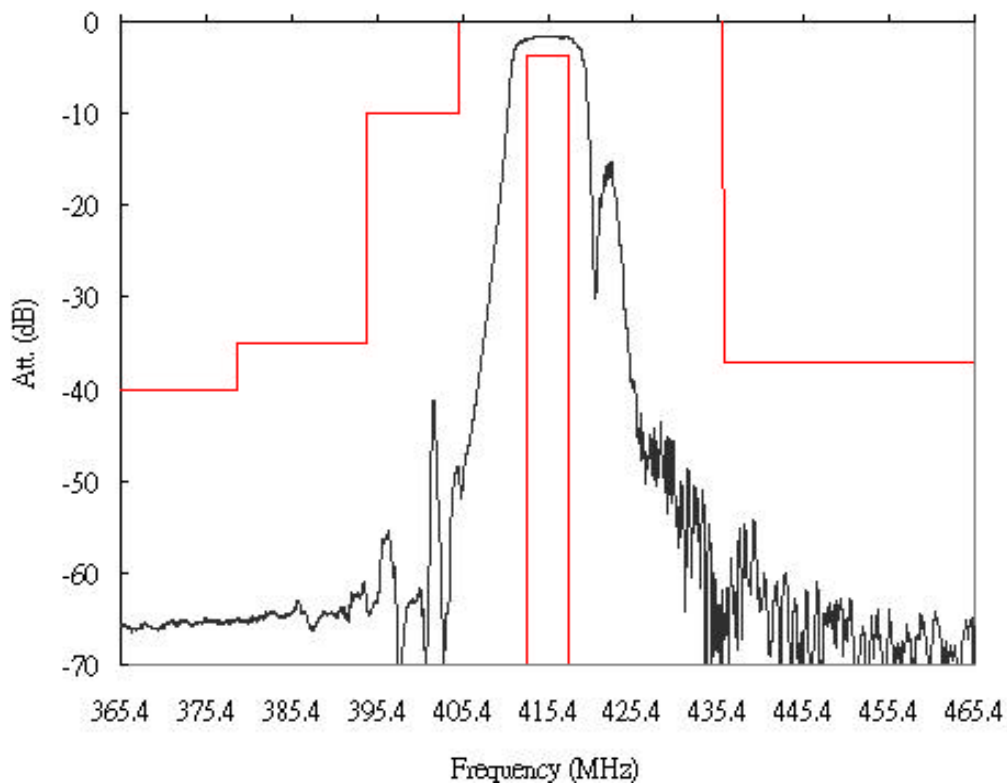
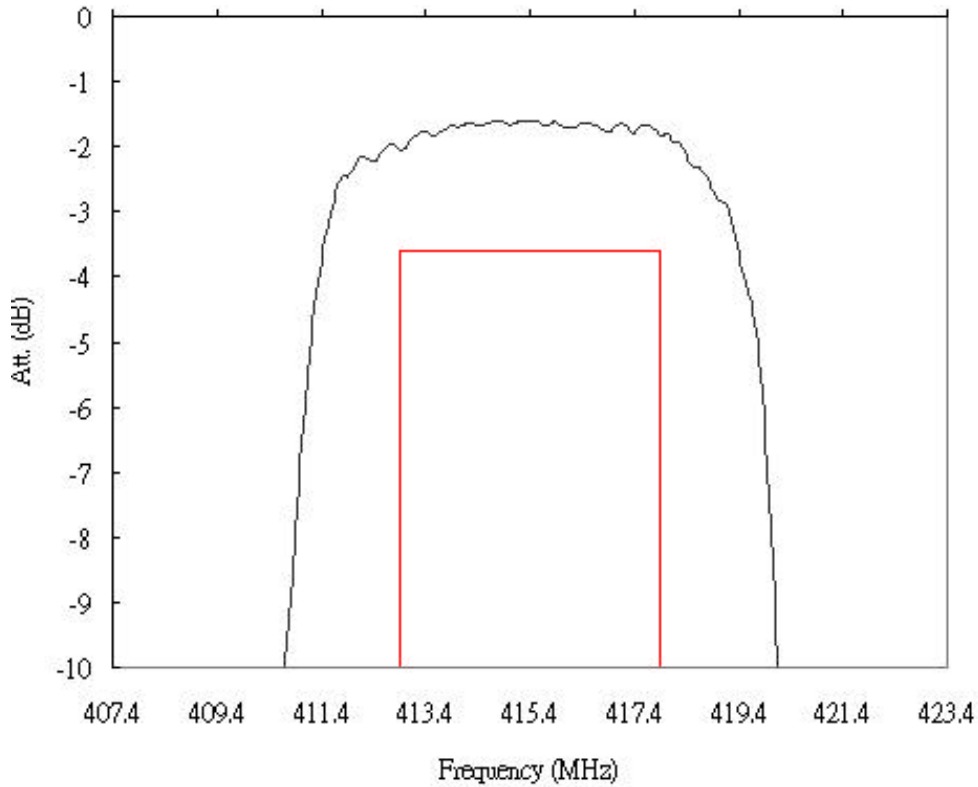
**Model: TA0526A**

**Part No: MA07611**

**REV. NO.: 1**

**B. FREQUENCY CHARACTERISTICS:**

**Transfer Function:**



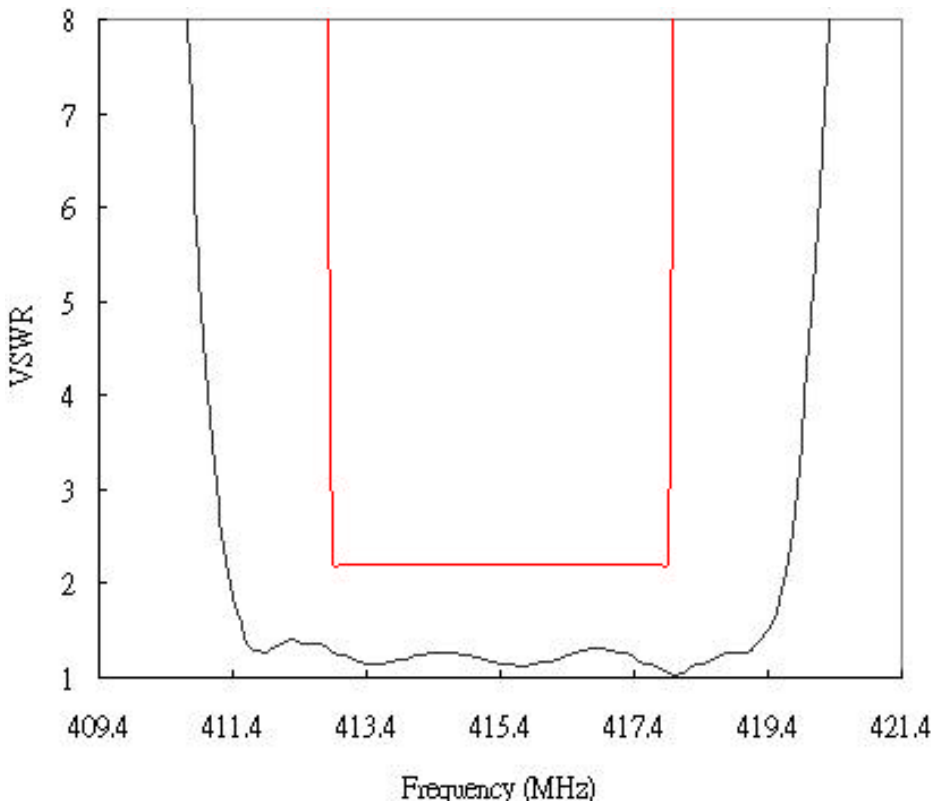
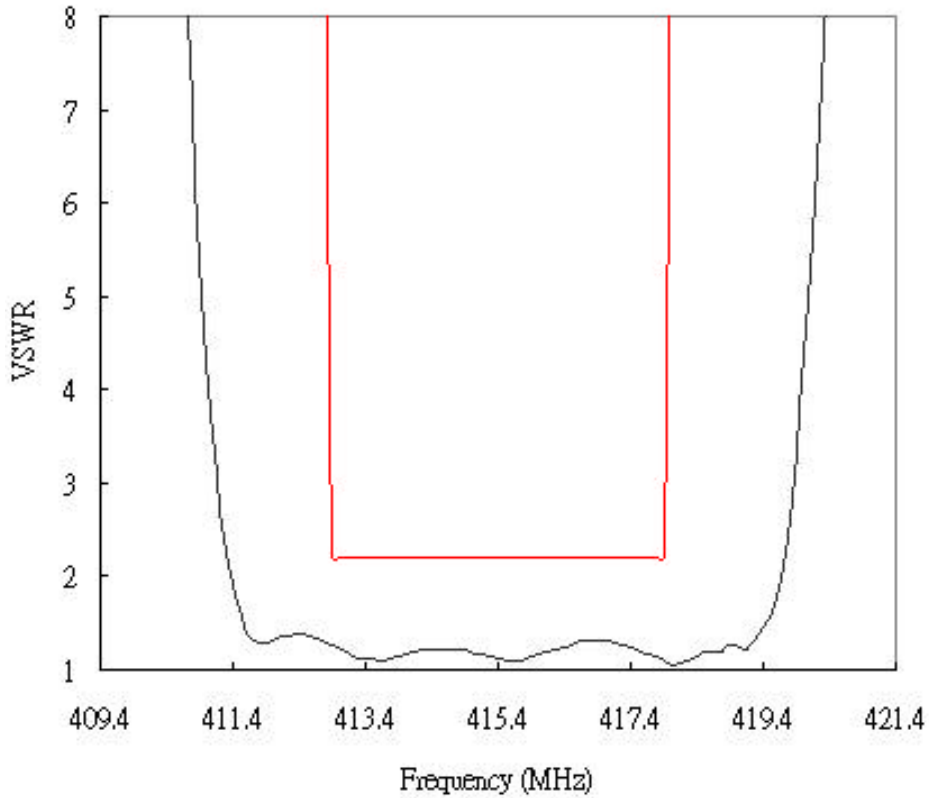
**SAW Filter 415.40MHz**

**Model: TA0526A**

**Part No: MA07611**

**REV. NO.: 1**

**Reflection Function:**



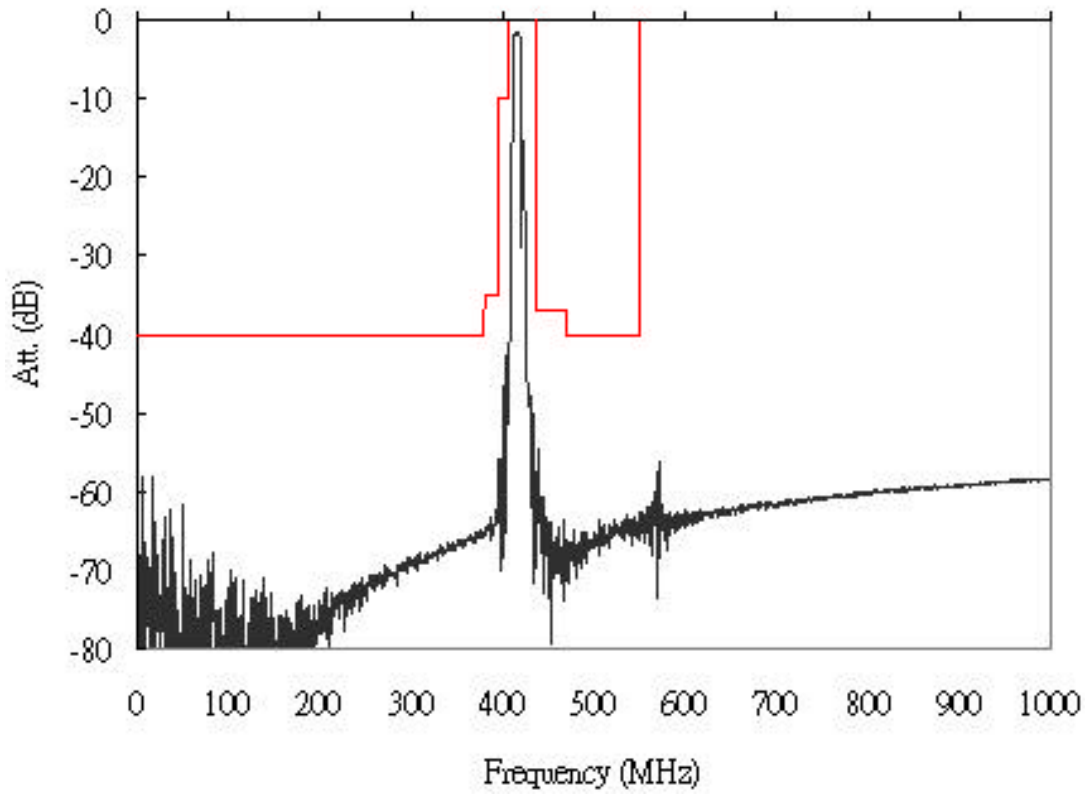
**SAW Filter 415.40MHz**

**Model: TA0526A**

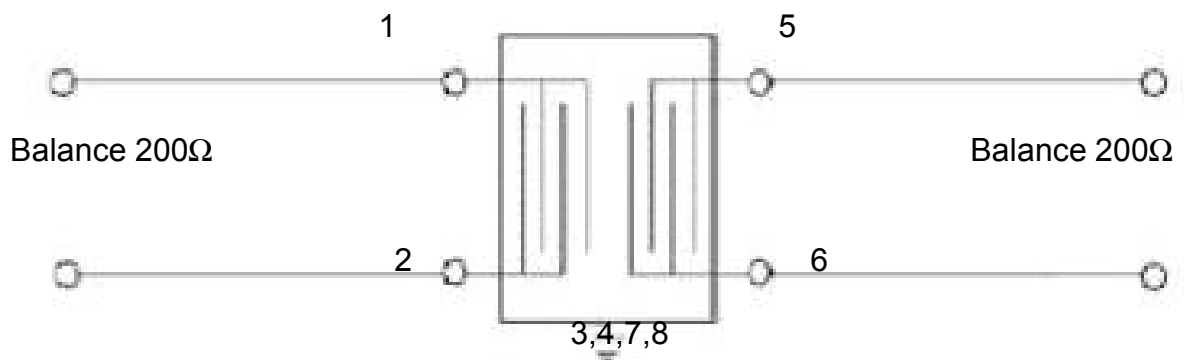
**Part No: MA07611**

**REV. NO.: 1**

**Wideband**



**D. MEASUREMENT CIRCUIT:**



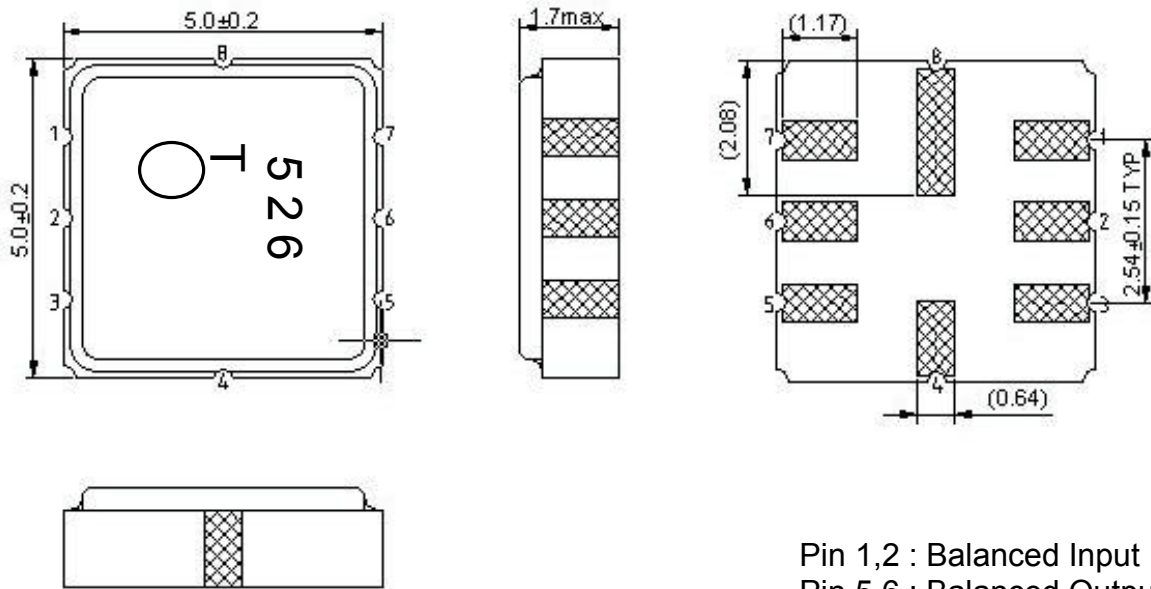
**SAW Filter 415.40MHz**

**Model: TA0526A**

Part No: **MA07611**

REV. NO.: 1

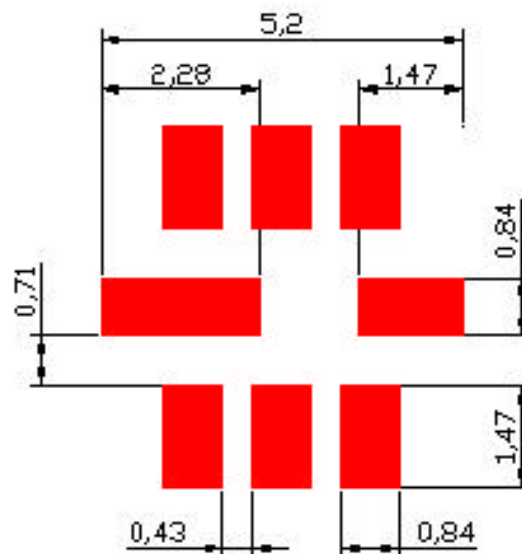
**E. OUTLINE DRAWING:**



Pin 1,2 : Balanced Input  
 Pin 5,6 : Balanced Output  
 Pin 3,4,7,8 : Ground  
 Unit : mm

Year	2001	2002	2003	2004
	2005	2006	2007	2008
Year Code	<b>A</b>	<b>a</b>	<b>A</b>	<b>a</b>

**F. PCB FOOTPRINT:**



**SAW Filter 415.40MHz**

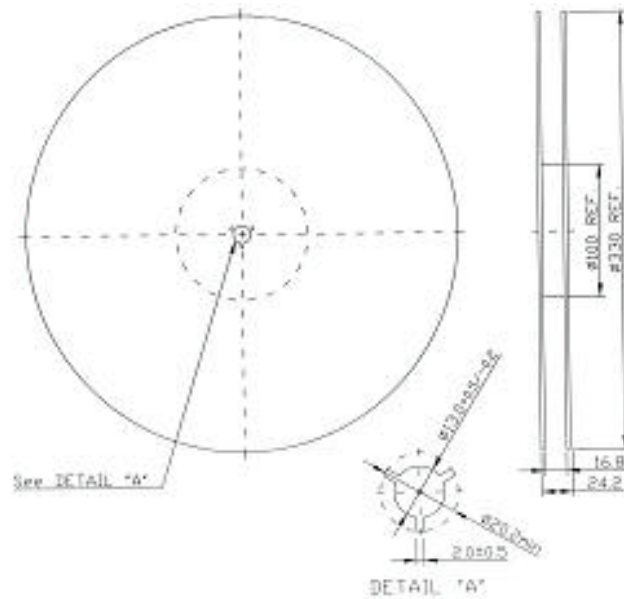
**Model: TA0526A**

**Part No: MA07611**

**REV. NO.: 1**

**G. PACKING:**

**1. REEL DIMENSION**



**2. TAPE DIMENSION**

