

SAW Filter 145.0MHz

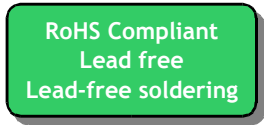
Model: TB0403A

Part No: MA07167

REV. NO.: 1

A. MAXIMUM RATING:

1. Operating Temperature: -40°C ~ +85 °C
2. Storage Temperature: -40°C ~ +85 °C



B. CHARACTERISTICS:

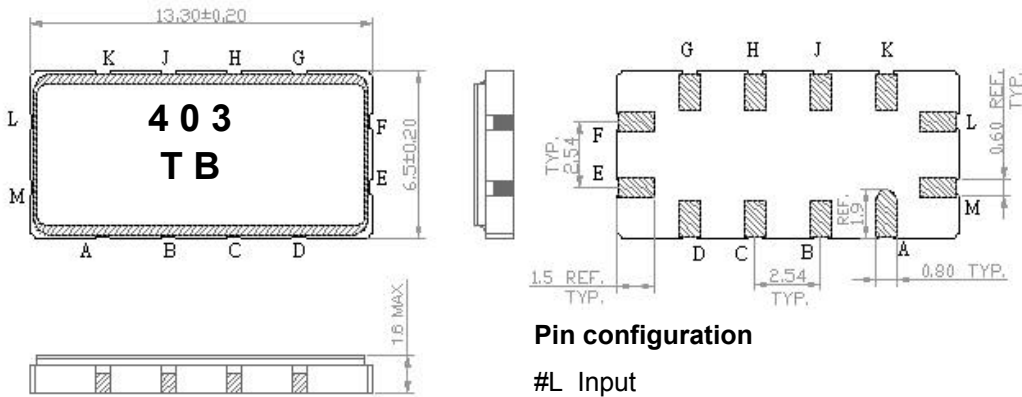
1. Ambient Temperature: 25°C

Characteristics	Value			Note.
	Min.		Max.	
Center frequency F_c MHz	-	145	-	-
Pass bandwidth (rel. attenuation ≤ 1.0 dB)	-	23	-	-
Maximum Insertion loss I.L. dB	-	14	16	-
3dB Bandwidth MHz	-	6.0	6.2	
20dB Bandwidth MHz	-	7.5	7.6	
40dB Bandwidth MHz	-	10	11	
Passband Ripple (143~147MHz) dB	-	0.8	1	-
Group Delay Ripple (143~147MHz) nS	-	90	-	-
Attenuation:(Reference level from minimum insertion loss)				
1) DC ~ 135 MHz	40	47	-	-
2) 135MHz ~ 139 MHz dB	40	44	-	-
3) 151MHz ~ 155 MHz dB	35	40	-	-
4) 155MHz ~ 255 MHz dB	40	43	-	-

SAW Filter 145.0MHz
Part No: MA07167

Model: TB0403A
REV. NO.: 1

C. OUTLINE DRAWING:



Pin configuration

#L Input

#M Input Ground

#E Output

#F Output Ground

#A,B,C,D,G,H,J,K To be grounded

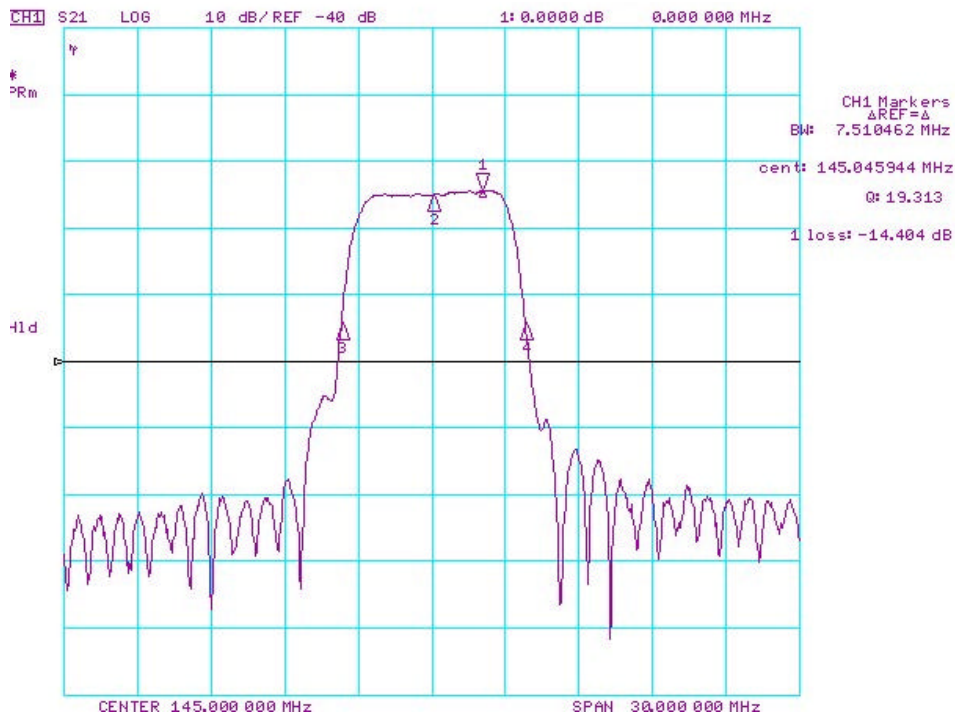
Unit mm

SAW Filter 145.0MHz
Part No: MA07167

Model: TB0403A
REV. NO.: 1

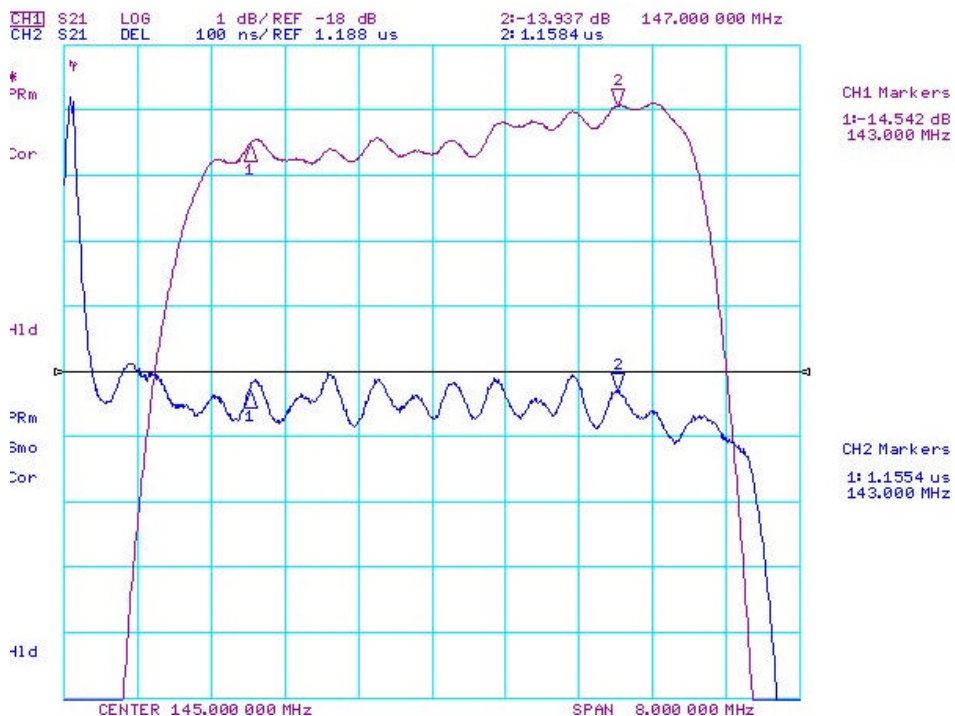
D. FREQUENCY CHARACTERISTICS:

1. S21 Response



Horizontal : 3MHz/Div, Vertical: 10dB/Div

2. Pass band Ripple and Group Delay Ripple



Horizontal : 0.8MHz/Div. Vertical: 1dB/Div. Vertical: 100nS/Div

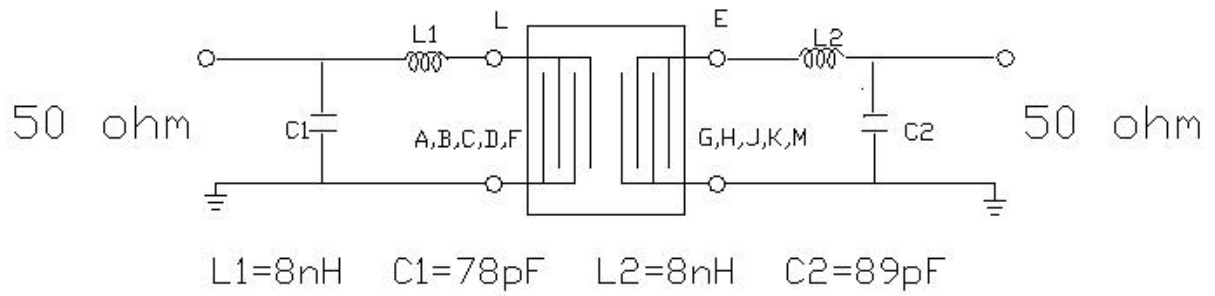
SAW Filter 145.0MHz

Model: TB0403A

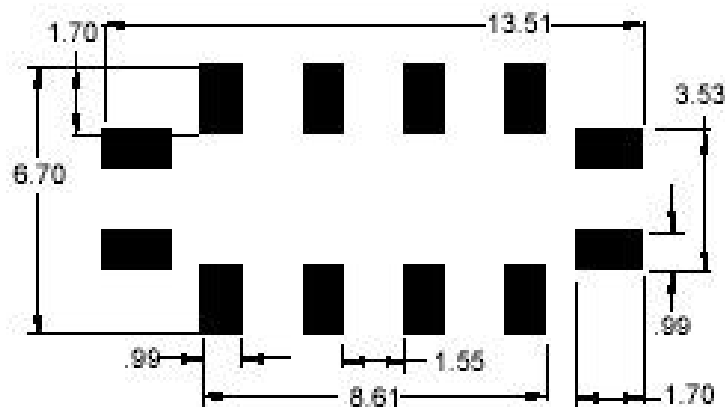
Part No: MA07167

REV. NO.: 1

E. TEST FIXTURE:



F. PCB FOOTPRINT

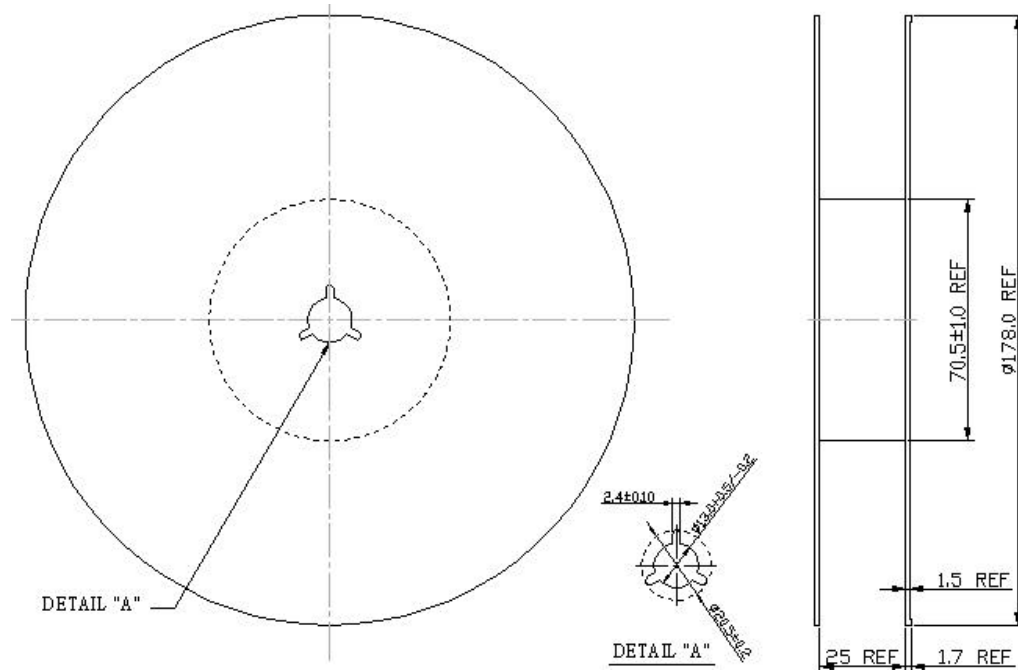


SAW Filter 145.0MHz
Part No: MA07167

Model: TB0403A
REV. NO.: 1

G. PACKING:

1. REEL DIMENSION



2. TAPE DIMENSION

