

**SAW Filter 868.35MHz**  
**Part No: MA07052**

**Model: TD0110A**  
**REV. NO.: 2**

**A. FEATURES:**

1. 2-Port Resonator.

**B. MAXIMUM RATING:**

1. Input Power Level: 0 dBm
2. DC voltage: 12 V
3. Operating Temperature: -40°C to +85°C
4. Storage Temperature: -40°C to +85°C

**C. ELECTRICAL CHARACTERISTICS:**

Reference Temperature  $T_A=25^\circ\text{C}$

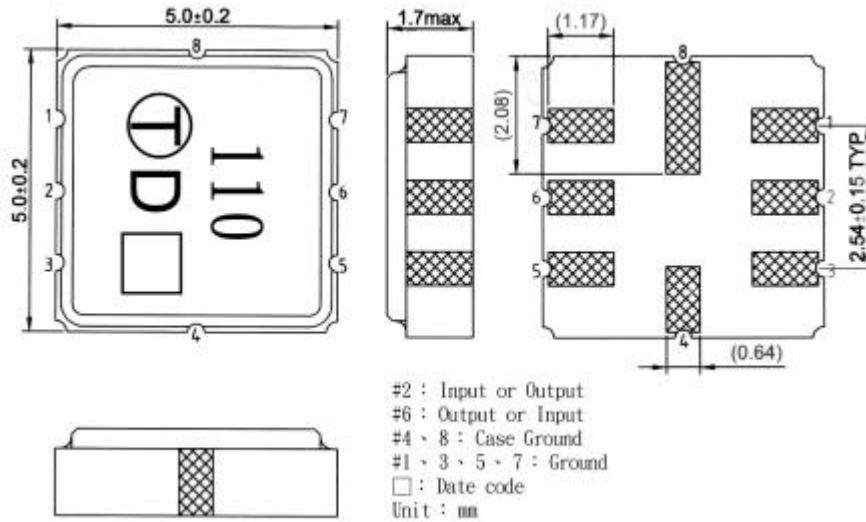
Characteristic	Units	Minimum	Typical	Maximum
Center frequency $f_c$	MHz	868.250	868.350	868.450
Insertion Loss $IL$	dB	-	6.7	9
Unload quality factor $Q_U$		4000	4900	-
Ageing of $f_c$	ppm/yr	-	-	10
Motional capacitance $C_1$	fF	-	0.334	-
Motional inductance $L_1$	$\mu\text{H}$	-	101.1	-
Motional resistance $R_1$	Ohm	-	112.4	-
Parallel capacitance $C_o$	pF	-	1.6	-
Frequency Temperature coefficient ( $TC_f$ )	ppm/c*2	-	0.032	-
Turnover $T_o$	deg.C	10	25	40
Package size		SMD5X5		

Temperature dependence of  $f_c$ :  $f_c(T_A)=f_c(T_O)(1+TC_f(T_A-T_O)^2)$

**SAW Filter 868.35MHz**  
**Part No: MA07052**

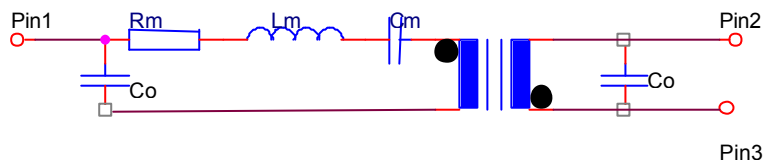
**Model: TD0110A**  
**REV. NO.: 2**

**D. OUTLINE DRAWING:**



**E. EQUIVALENT CIRCUIT:**

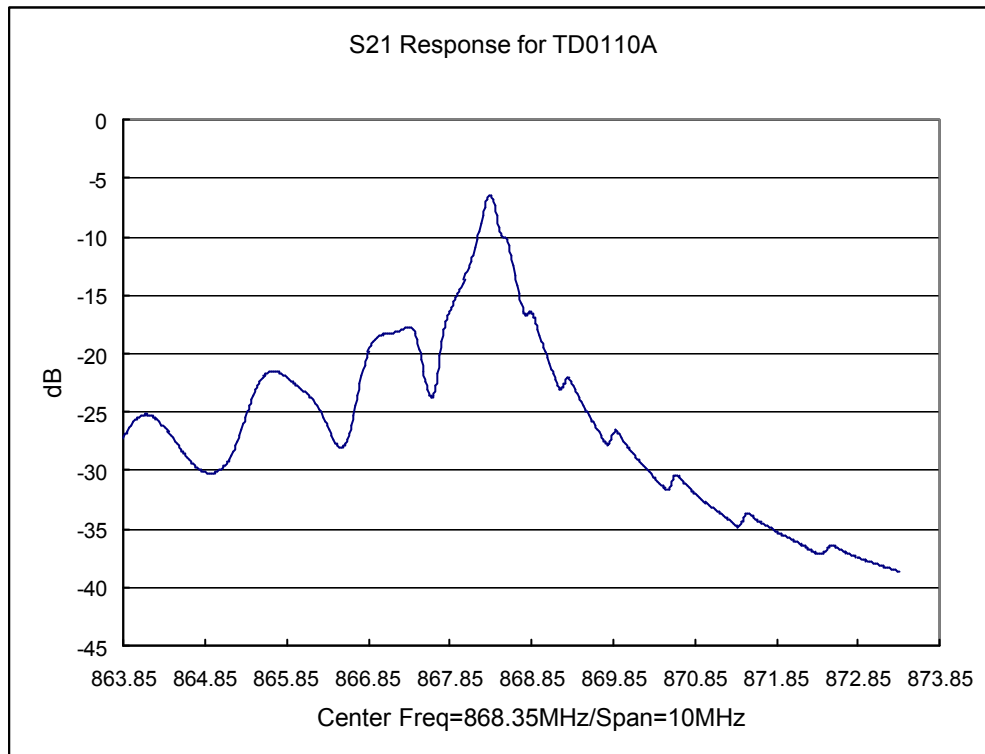
Two-Port Resonator:



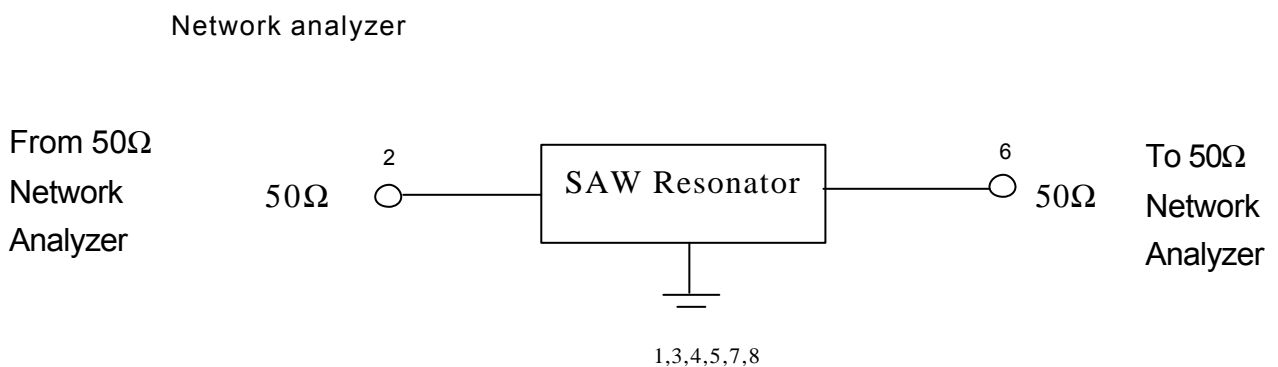
**SAW Filter 868.35MHz**  
**Part No: MA07052**

**Model: TD0110A**  
**REV. NO.: 2**

**F. FREQUENCY CHARACTERISTICS:**



**G. TEST CIRCUIT:**

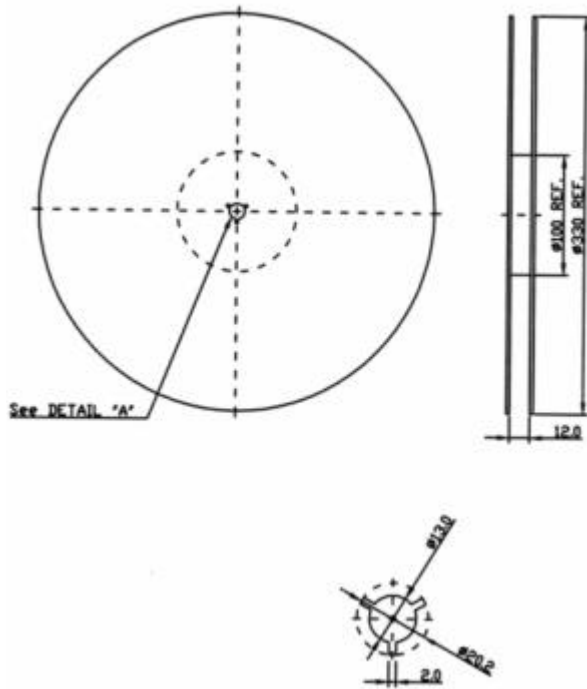


**SAW Filter 868.35MHz**  
Part No: **MA07052**

**Model: TD0110A**  
REV. NO.: 2

**H. PACKING:**

1. REEL DIMENSION



2. TAPE DIMENSION

