
SAW Resonator 433.920MHz**Model: TC0170A****Part No: MP06925****REV NO.: 6**

A. FEATURES:

- 1-Port Resonator.

B. MAXIMUM RATING:

- 1.Input Power Level: 0 dBm
- 2.DC voltage: 12 V
- 3.Operating Temperature: -40°C to +85°C
- 4.Storage Temperature: -40°C to +85°C

C. ELECTRICAL CHARACTERISTICS:Reference Temperature $T_A=25^{\circ}\text{C}$

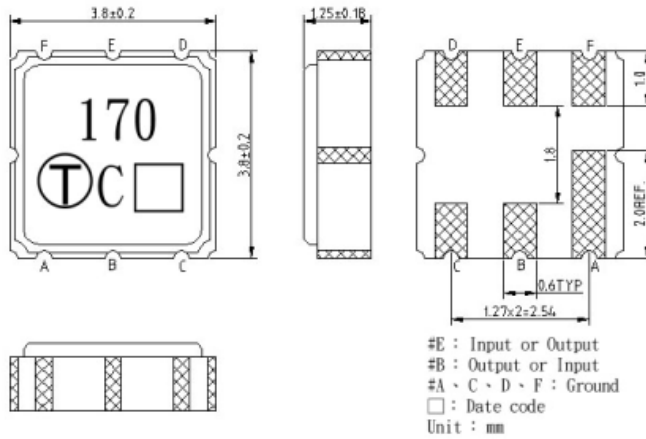
Characteristic	Units	Minimum	Typical	Maximum
Center frequency f_c	MHz	433.845	433.920	433.995
Insertion Loss IL	dB	-	1.6	2.5
Unload quality factor Q_U		6000	12000	-
Ageing of f_c	ppm/yr	-	-	± 10
Motional capacitance C1	fF	-	1.26	-
Motional inductance L1	μH	-	98.8	-
Motional resistance R1	Ohm	-	22.2	-
Parallel capacitance C_o	pF	-	2.63	-
Frequency Temperature coefficient (TC_f)	ppm/ $^{\circ}\text{C}^2$	-	0.032	-
Turnover T_o	$^{\circ}\text{C}$	10	25	40
Package size		SMD 3.8X3.8X1.2 mm		

Temperature dependence of f_c : $f_c(T_A)=f_c(T_O)(1+TC_f(T_A-T_O)^2)$

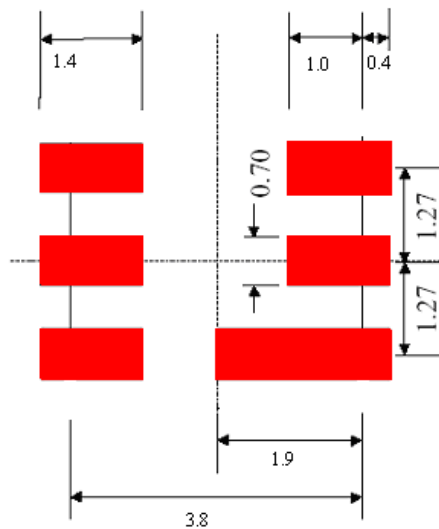
SAW Resonator 433.920MHz
Part No: MP06925

Model: TC0170A
REV NO.: 6

D. OUTLINE DRAWING:

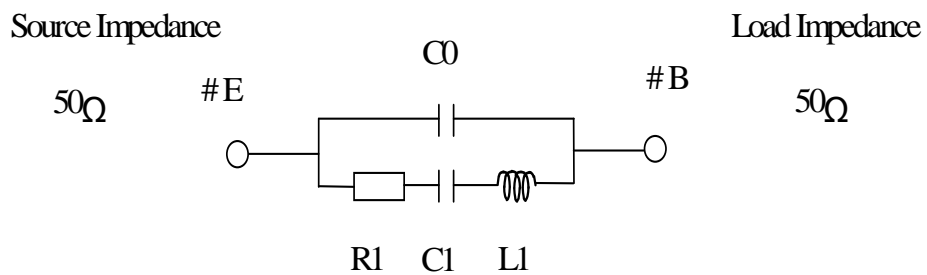


E. PCB Foot Print:



F. EQUIVALENT CIRCUIT:

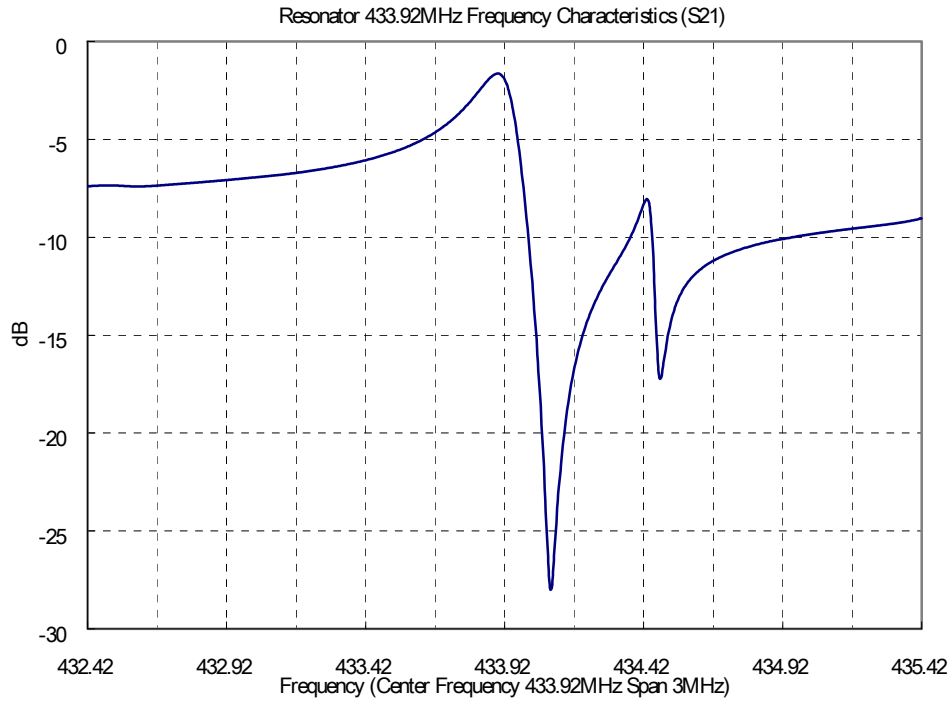
One-Port Resonator:



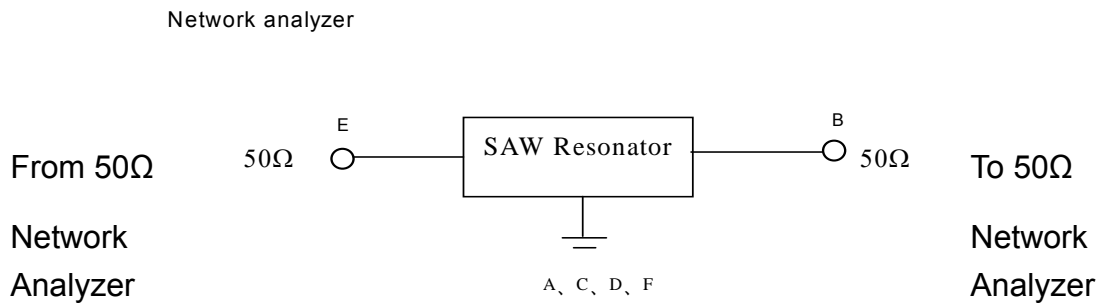
SAW Resonator 433.920MHz
Part No: MP06925

Model: TC0170A
REV NO.: 6

G. FREQUENCY CHARACTERISTICS:



H. TEST CIRCUIT:

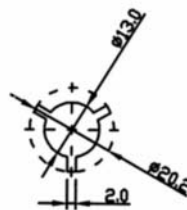
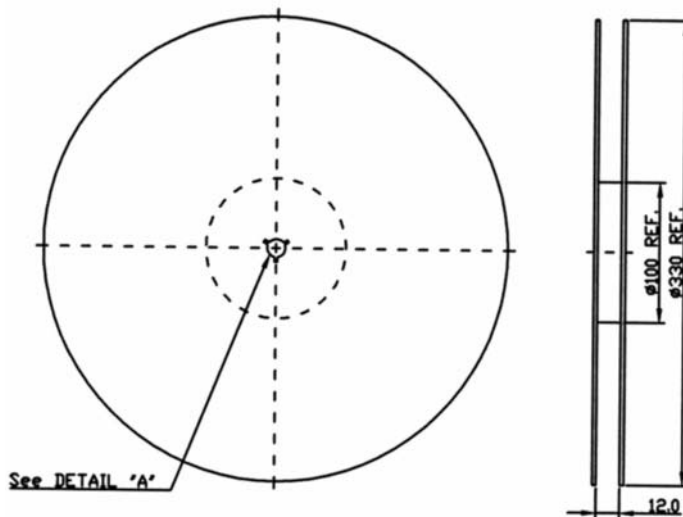


SAW Resonator 433.920MHz
Part No: **MP06925**

Model: TC0170A
REV NO.: 6

I. PACKING:

1. REEL DIMENSION



2. TAPE DIMENSION

