

SAW Filter 70.0MHz
Part No: MA06843

Model: TB0230A
REV. NO.: 1

A. MAXIMUM RATING:

1. Input Power Level: +20 dBm
2. Operating Temperature: -10°C to +70°C
3. Storage Temperature: -40°C to +85°C

B. ELECTRICAL CHARACTERISTICS:

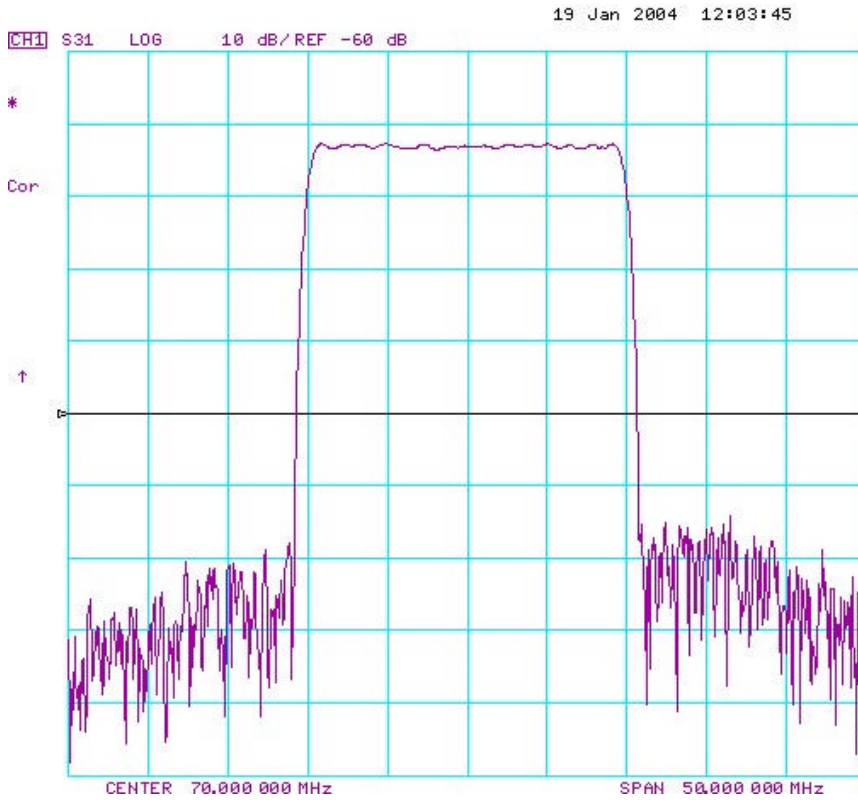
Parameters	Unit	Min.	Typical	Max.
Center frequency, Fc	MHz	69.94	70.0	70.06
Insertion Loss, IL	dB	-	24.0	26.0
1 dB Bandwidth	MHz	19.0	19.18	-
3 dB Bandwidth	MHz	19.5	19.62	-
40 dB Bandwidth	MHz	-	21.43	21.7
Relative Attenuation:				
10 to 60 MHz	dB	50	55	-
80 to 140 MHz	dB	50	55	-
Amplitude ripple within Fc ± 8 MHz	dB	-	0.8	1.0
Group delay ripple within Fc ± 8 MHz	nsec	-	30	80
Absolute Delay	usec	-	1.98	-
Substrate Material	-	-	LN	-

SAW Filter 70.0MHz
Part No: MA06843

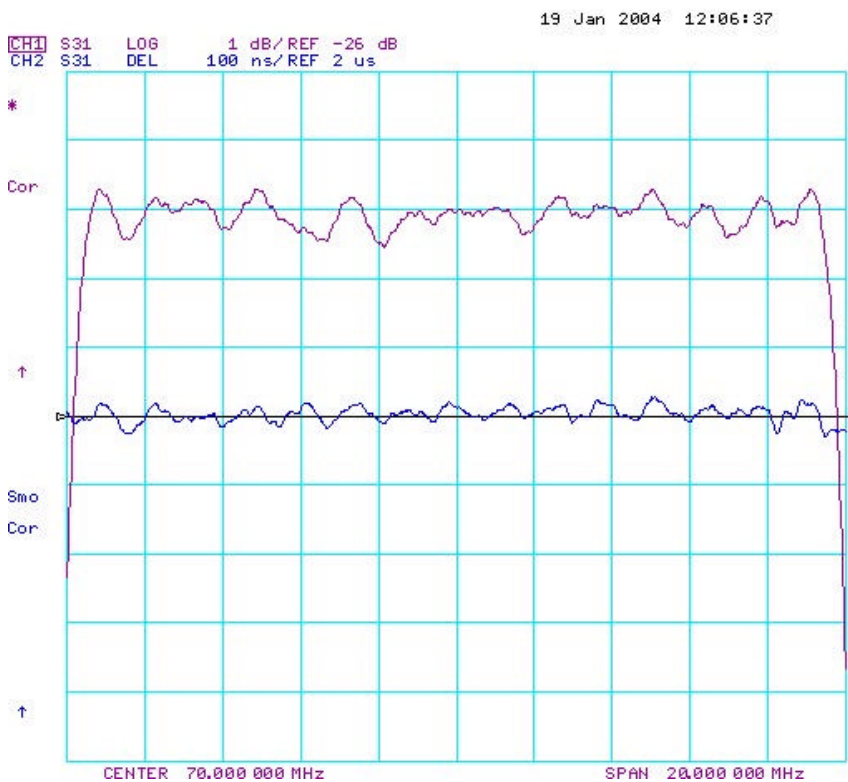
Model: TB0230A
REV. NO.: 1

C. FREQUENCY CHARACTERISTICS:

(1) Frequency Response



(2) Passband response and Group Delay Variation

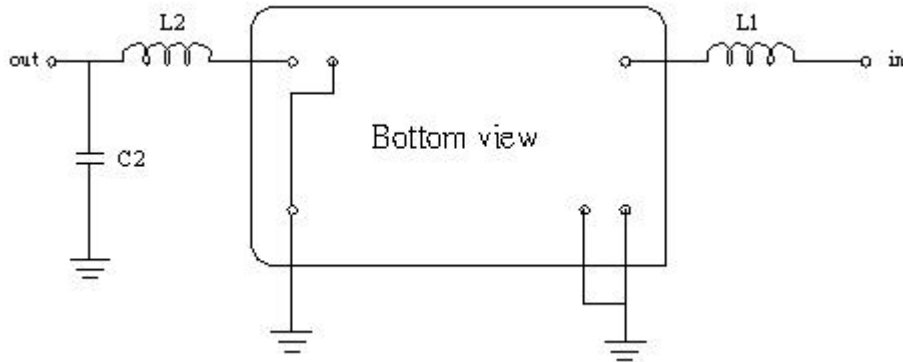


SAW Filter 70.0MHz
Part No: MA06843

Model: TB0230A
REV. NO.: 1

D. MEASUREMENT CIRCUIT:

Source and load impedance: 50 Ω



L1=150 nH, L2=220 nH, C2=43 pF

E. OUTLINE DRAWING:

