

---

---

**403.550MHz SAW Resonator**

**Model: TD0111A**

**Part No: MA06570**

**REV. NO.: 1**

---

---

**A. FEATURES:**

1. 2-Port Resonator.

**B. MAXIMUM RATING:**

1. Input Power Level: 0 dBm
2. DC voltage: 12 V
3. Operating Temperature: -40°C to +85°C
4. Storage Temperature: -40°C to +85°C

**C. ELECTRICAL CHARACTERISTICS:**

Reference Temperature  $T_A=25^\circ\text{C}$

Characteristic	Units	Minimum	Typical	Maximum
Center frequency $f_c$	MHz	403.429	403.550	403.671
Insertion Loss IL	dB	-	4.9	9
Unload quality factor $Q_U$		6000	13800	-
Ageing of $f_c$	ppm/yr	-	-	10
Motional capacitance $C_1$	fF	-	0.38	-
Motional inductance $L_1$	$\mu\text{H}$	-	405.94	-
Motional resistance $R_1$	Ohm	-	74.55	-
Parallel capacitance $C_0$	pF	-	1.71	-
Frequency Temperature coefficient ( $TC_f$ )	ppm/c*2	-	0.032	-
Turnover $T_0$	deg.C	10	25	40
Package size		TO39		

Temperature dependence of  $f_c$ :  $f_c(T_A)=f_c(T_0)(1+TC_f(T_A-T_0)^2)$

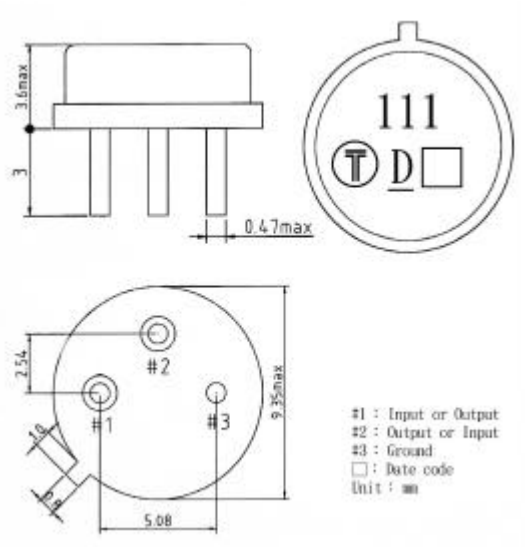
**403.550MHz SAW Resonator**

**Model: TD0111A**

**Part No: MA06570**

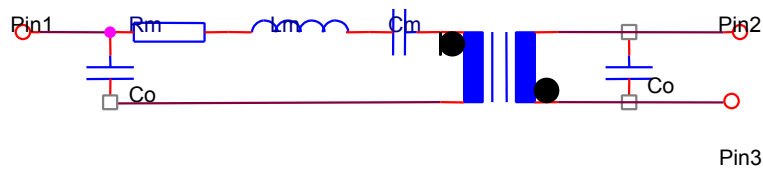
**REV. NO.: 1**

**D. OUTLINE DRAWING:**



**E. EQUIVALENT CIRCUIT:**

Two-Port Resonator:



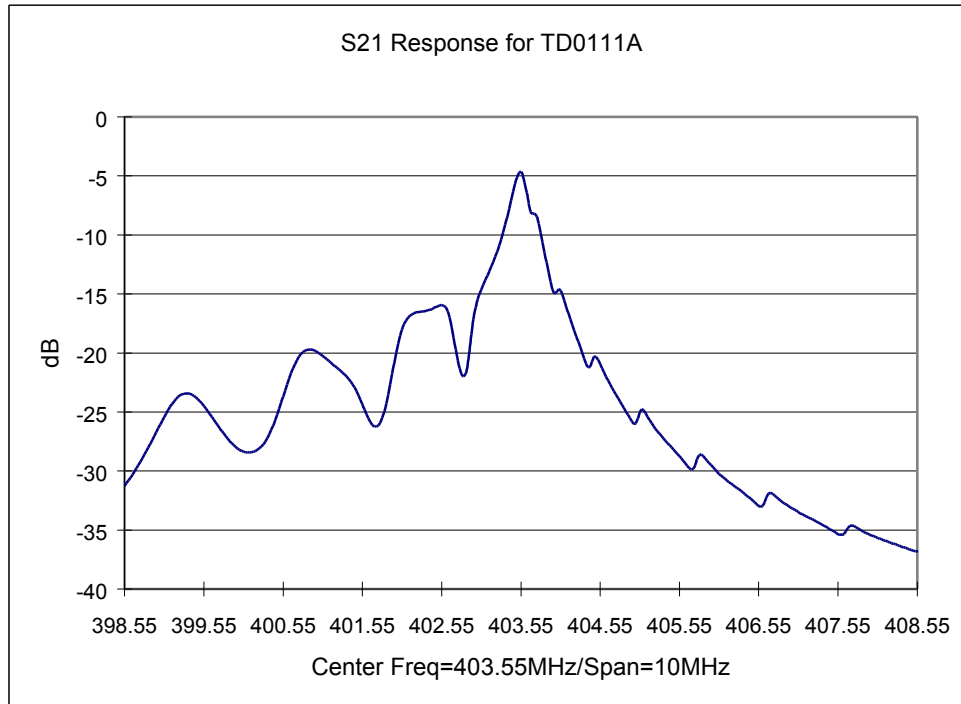
**403.550MHz SAW Resonator**

**Model: TD0111A**

**Part No: MA06570**

**REV. NO.: 1**

**F. FREQUENCY CHARACTERISTICS:**



**G. TEST CIRCUIT:**

