

SAW Resonator 915.0MHz

Model: TC0234A

Part No: MA06291

REV. NO.: 1

A. FEATURES:

1. 1-Port Resonator.

B. MAXIMUM RATING:

1. Input Power Level: 0 dBm
2. DC voltage: 12 V
3. Operating Temperature: -40°C to +85°C
4. Storage Temperature: -40°C to +85°C

C. ELECTRICAL CHARACTERISTICS:

Reference Temperature $T_A=25^\circ\text{C}$

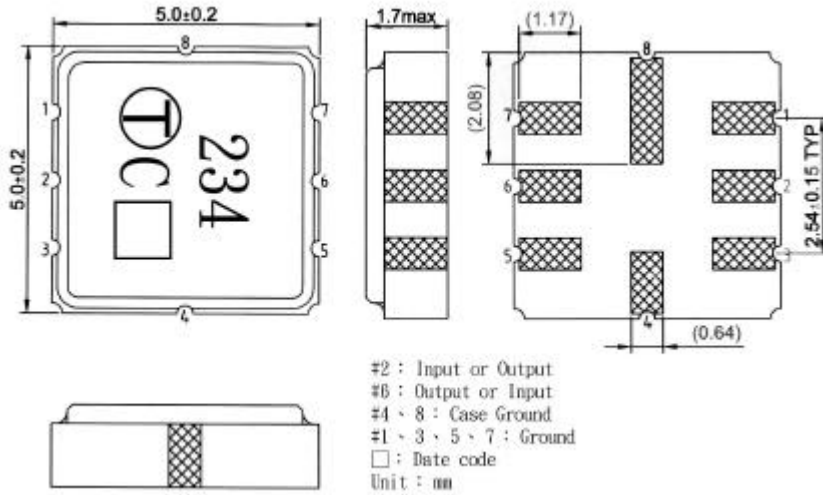
Characteristic	Units	Minimum	Typical	Maximum
Center frequency f_c	MHz	914.850	915	915.150
Insertion Loss IL	dB	-	1.1	2.0
Unload quality factor Q_U		5000	6200	-
Ageing of f_c	ppm/yr	-	-	10
Motional capacitance C1	fF	-	1.39	-
Motional inductance L1	μH	-	21.8	-
Motional resistance R1	Ohm	-	20.3	-
Parallel capacitance C_o	pF	-	2.6	-
Frequency Temperature coefficient (TC_f)	ppm/c*2	-	0.032	-
Turnover T_o	deg.C	10	25	40
Package size	SMD 5X5X1.4mm			

Temperature dependence of f_c : $f_c(T_A)=f_c(T_O)(1+TC_f(T_A-T_O)^2)$

SAW Resonator 915.0MHz
Part No: MA06291

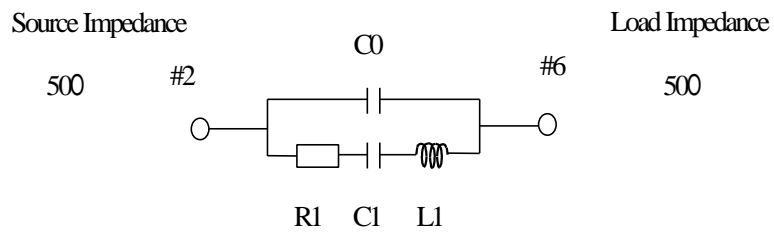
Model: TC0234A
REV. NO.: 1

D. OUTLINE DRAWING:



E. EQUIVALENT CIRCUIT:

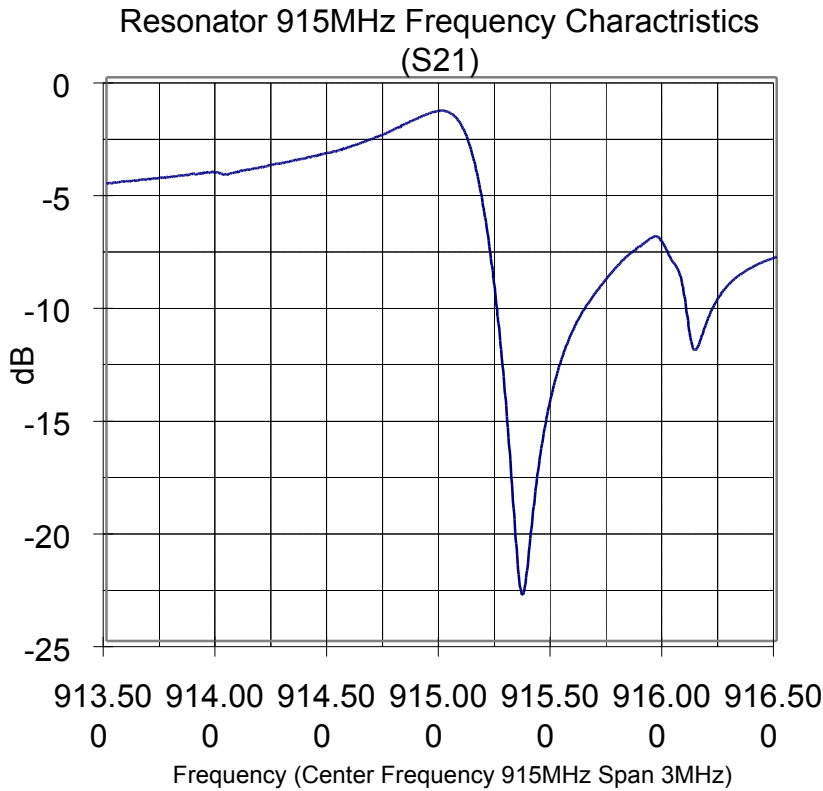
One-Port Resonator:



SAW Resonator 915.0MHz
Part No: MA06291

Model: TC0234A
REV. NO.: 1

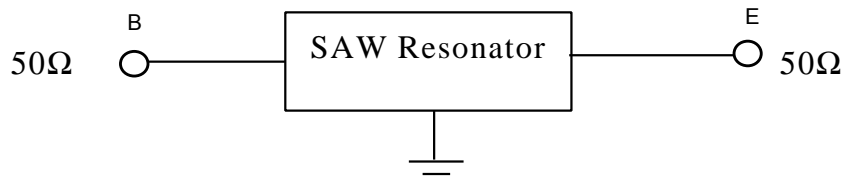
F. FREQUENCY CHARACTERISTICS:



G. TEST CIRCUIT:

Network analyzer

From 50Ω
Network
Analyzer



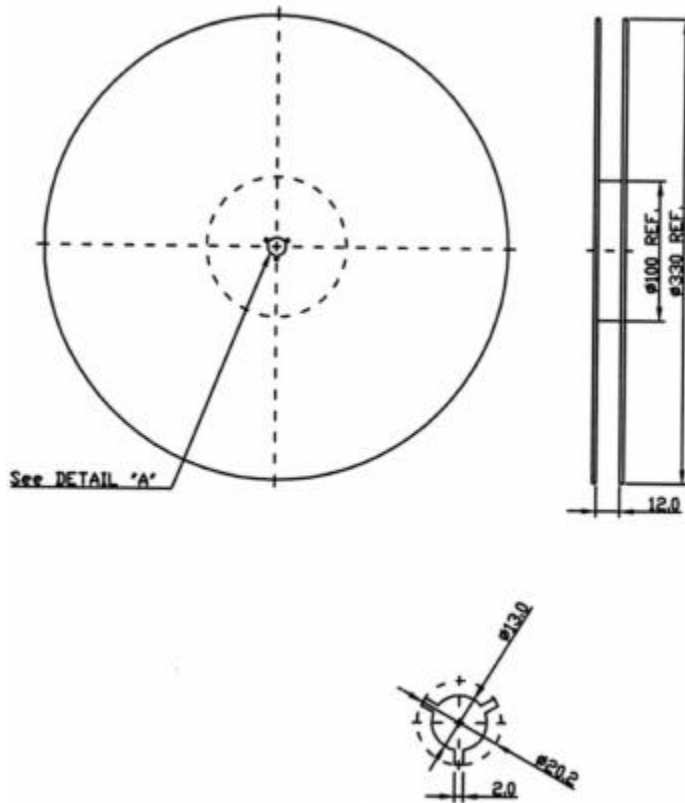
To 50Ω
Network
Analyzer

SAW Resonator 915.0MHz
Part No: MA06291

Model: TC0234A
REV. NO.: 1

H. PACKING:

1. REEL DIMENSION



2. TAPE DIMENSION

