

315.0MHz SAW Filter

Model: **TA0301A**

Part No: **MA06217**

REV NO.: 3

A. MAXIMUM RATING:

1. Input Power Level: 10 dBm
2. DC voltage: 6 V
3. Operating Temperature: -40°C to +125°C
4. Storage Temperature: -40°C to +125°C

B. ELECTRICAL CHARACTERISTICS:

TA= -40°C to +95°C

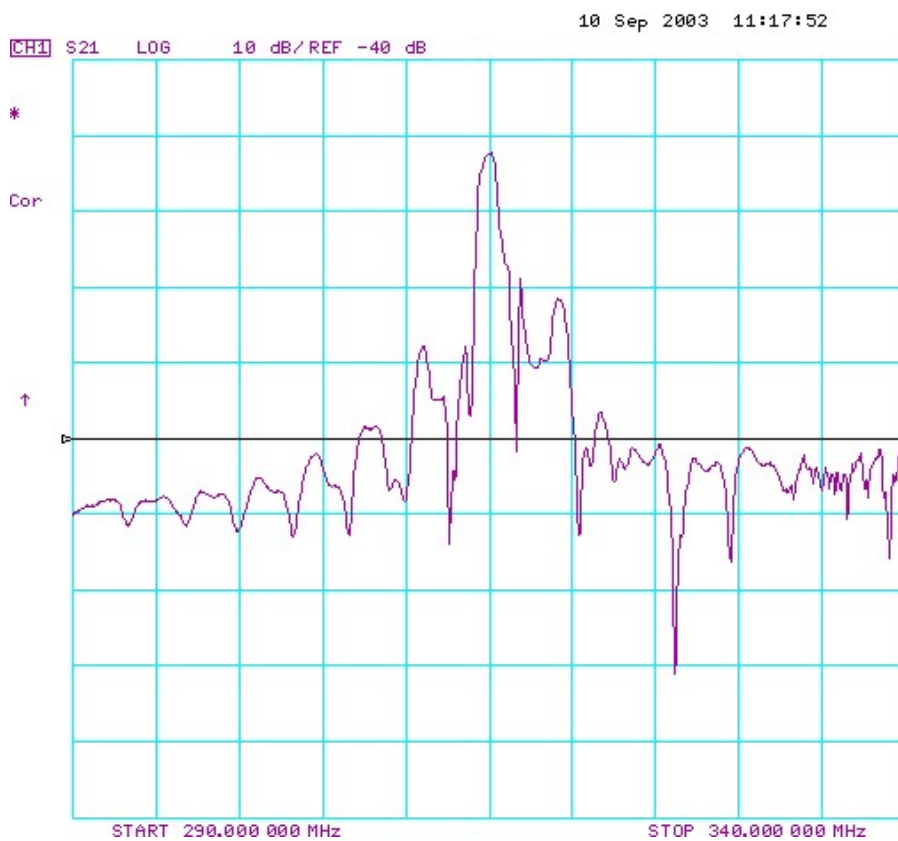
Item	Min.	Typ.	Max.	Note
Center frequency F_c (MHz)	-	315	-	1
Minimum I.L. (314.82~315.22 MHz) (dB) IL_{min}	-	2.2	4.0	
Pass band (relative to IL_{min})				
314.77~315.2 MHz (dB)	-	1.5	3.0	1
314.71~315.26 MHz (dB)	-	2.0	6.0	
Pass bandwidth (relative to IL_{min}) BW_3 (KHz)	800	920	-	
Attenuation:(relative to IL_{min}) (dB)				
10~270 MHz (dB)	45	50	-	1
270~309 MHz (dB)	30	35	-	
309~313.94 MHz (dB)	15	20	-	
316~335 MHz (dB)	10	15	-	
335~400 MHz (dB)	35	40	-	
400~1000 MHz (dB)	45	50	-	
Impedance at F_c ; Input $Z_{IN}=R_{IN}/C_{IN}$ Output $Z_{OUT}=R_{OUT}/C_{OUT}$	373Ω // 5.0 pF 373Ω // 5.0 pF			

Note1. The standard definitions is in JIS C 6703

315.0MHz SAW Filter
Part No: MA06217

Model: TA0301A
REV NO.: 3

C. FREQUENCY CHARACTERISTICS:



315.0MHz SAW Filter

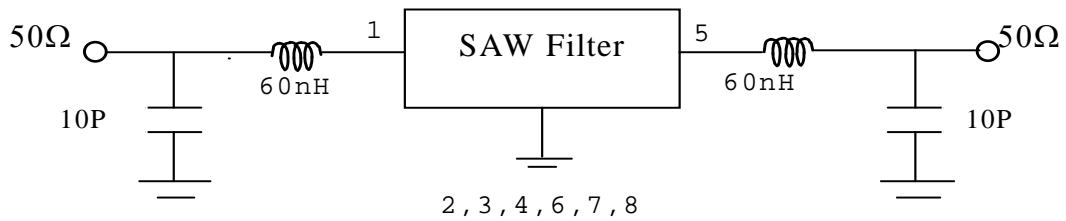
Model: TA0301A

Part No: MA06217

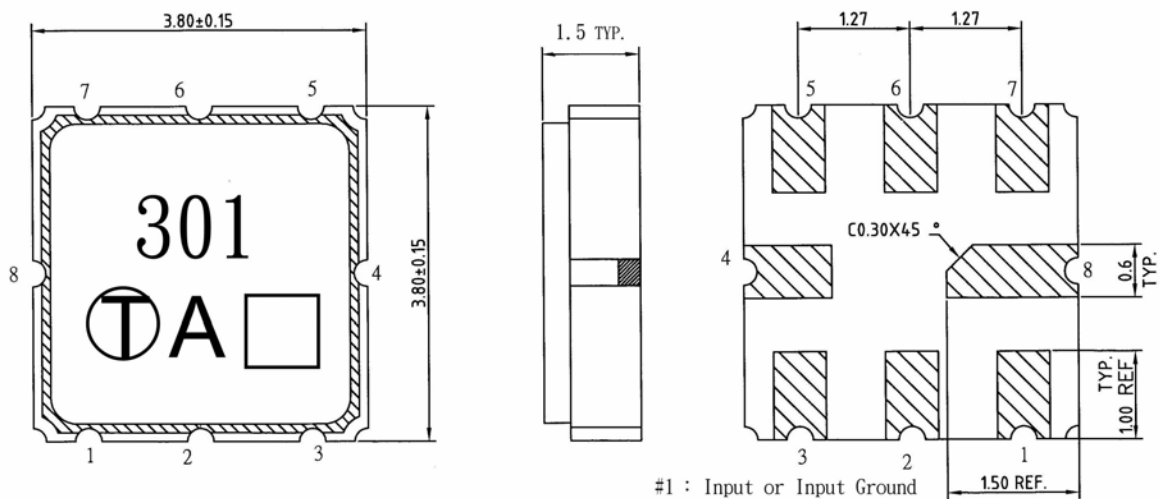
REV NO.: 3

D. MEASUREMENT CIRCUIT:

HP Network analyzer



E. OUTLINE DRAWING:



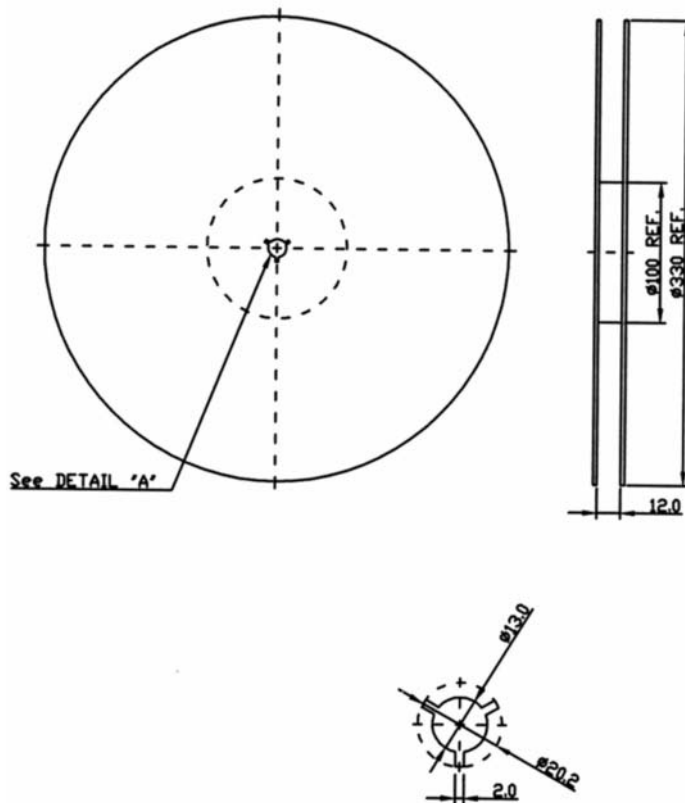
- #1 : Input or Input Ground
 - #2 : Input Ground or Input
 - #5 : Output
 - #6 : Output Ground
 - #4、8 : Case Ground
 - #3、7 : Ground
 - : Date code
- Unit : mm

315.0MHz SAW Filter
Part No: MA06217

Model: TA0301A
REV NO.: 3

F. PACKING:

1. REEL DIMENSION



2. TAPE DIMENSION

