

915.0MHz SAW Resonator
Part No: MA06101

Model: TD0106A
REV NO.: 1

A. FEATURES:

1. 2-Port Resonator.

B. MAXIMUM RATING:

1. Input Power Level: 0 dBm
2. DC voltage: 12 V
3. Operating Temperature: -40°C to +85°C
4. Storage Temperature: -40°C to +85°C

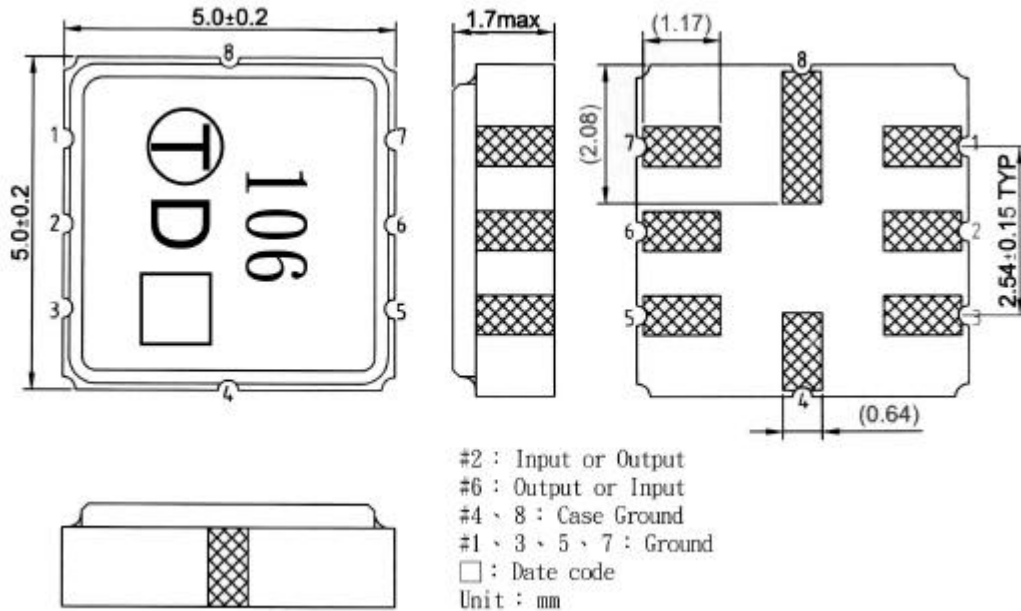
C. ELECTRICAL CHARACTERISTICS:

| Characteristic | Units | Minimum | Typical | Maximum |
|-------------------------|---------|---------------|---------|---------|
| Center frequency Fr | MHz | 914.850 | 915.000 | 915.150 |
| Insertion Loss IL | dB | - | 8 | 9 |
| Equivalent Elements | | | | |
| Motional capacitance C1 | fF | - | 0.225 | - |
| Motional inductance L1 | μH | - | 134.5 | - |
| Motional resistance R1 | Ohm | - | 125 | - |
| Parallel capacitance Co | pF | - | 1.9 | - |
| Temp.coeff. | ppm/c*2 | - | 0.032 | - |
| Turnover To | deg.C | - | 25 | - |
| Package size | | SMD 5X5X1.4mm | | |

915.0MHz SAW Resonator
Part No: MA06101

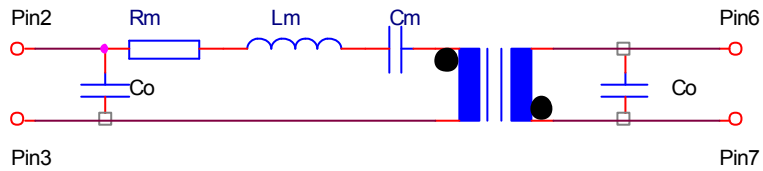
Model: TD0106A
REV NO.: 1

D. OUTLINE DRAWING:



E. EQUIVALENT CIRCUIT:

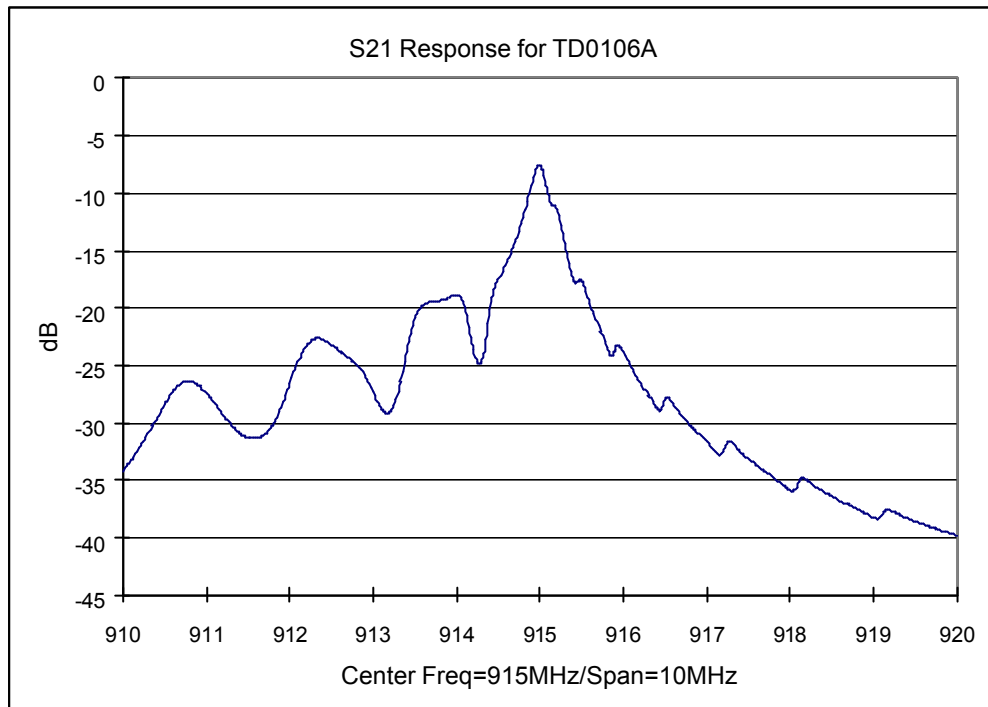
Two-Port Resonator:



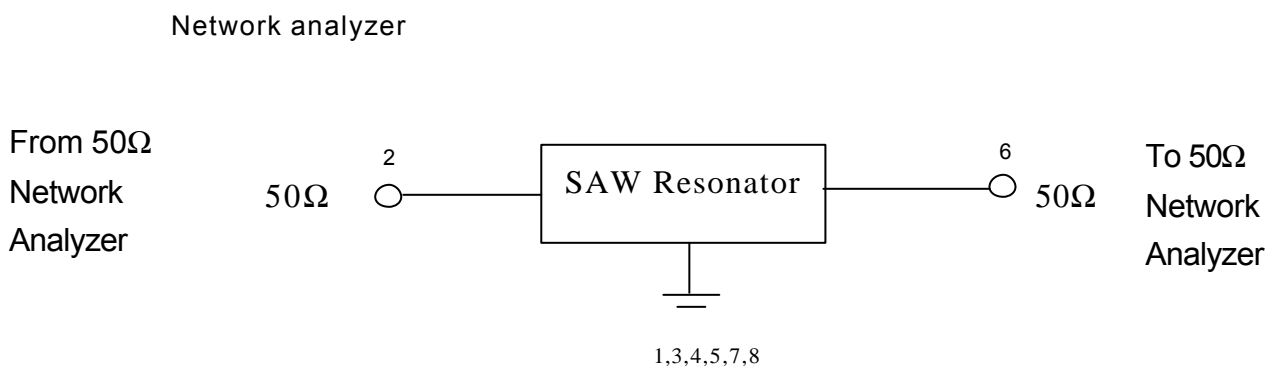
915.0MHz SAW Resonator
Part No: **MA06101**

Model: TD0106A
REV NO.: 1

F. FREQUENCY CHARACTERISTICS:



G. TEST CIRCUIT:

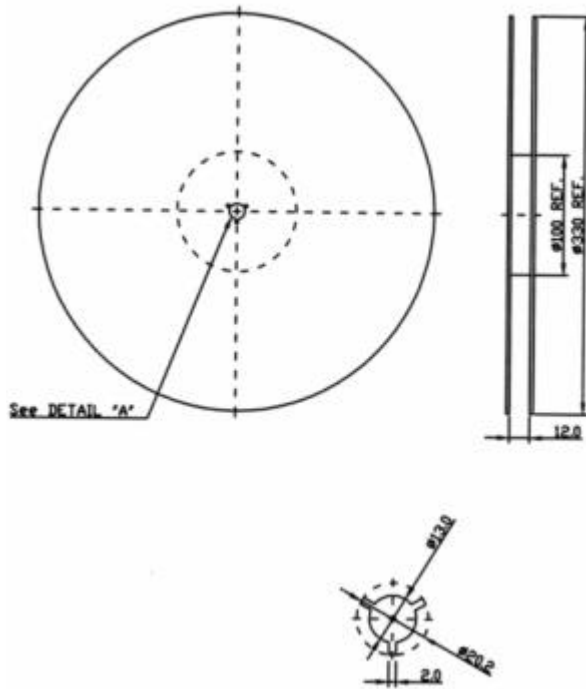


915.0MHz SAW Resonator
Part No: MA06101

Model: TD0106A
REV NO.: 1

H. PACKING:

1. REEL DIMENSION



2. TAPE DIMENSION

