

140.0MHz SAW Filter

Model: TB0217A

Part No: MA06078

REV NO.: 2

A. MAXIMUM RATING:

1. Input Power Level: 10 dBm
2. DC Voltage: 5V
3. Operating Temperature: -40°C to +85°C
4. Storage Temperature: -50°C to +95°C

B. ELECTRICAL CHARACTERISTICS:

Item	Unit	Min.	Type.	Max.	Note
Center frequency, Fc	MHz	-	140	-	-
Minimum Insertion Loss, (Fc±20KHz) IL	dB	-	3.0	6.0	-
3 dB bandwidth, BW ₋₃	KHz	40	100	-	1
Passband Ripple (Fc±20KHz)	dB	-	0.1	3.0	-
50 dB bandwidth, BW ₋₅₀	KHz	-	390	450	-
Group delay ripple (Fc±20KHz), GD	µs	-	1	12	-
Temperature coefficient of frequency TCf	ppm/C ²	-	-0.032	-	-

Note1. Considering -20 KHz frequency shift from -40°C to +85°C

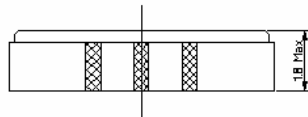
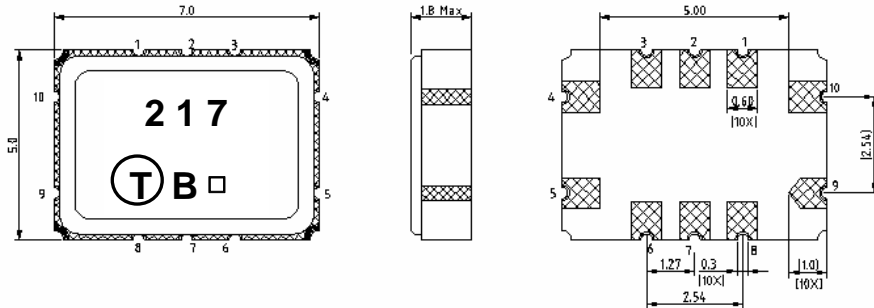
140.0MHz SAW Filter

Model: TB0217A

Part No: MA06078

REV NO.: 2

C. OUTLINE DRAWING:



Pin configuration

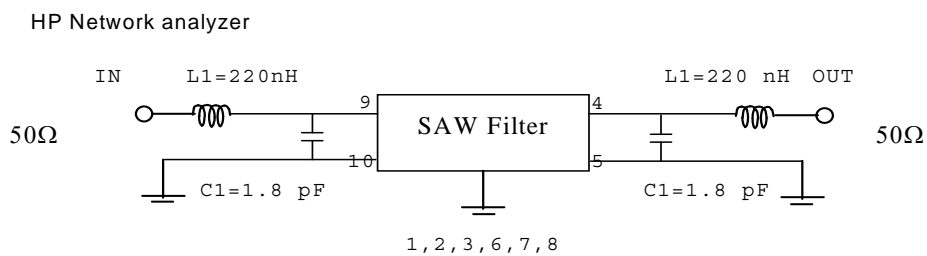
- #9 Input
- #4 Output
- #10 Balance input or input ground
- #5 Balance output or output ground
- #1,2,3,6,7,8 To be grounded

□ Date code

Unit mm

D. MEASUREMENT CIRCUIT:

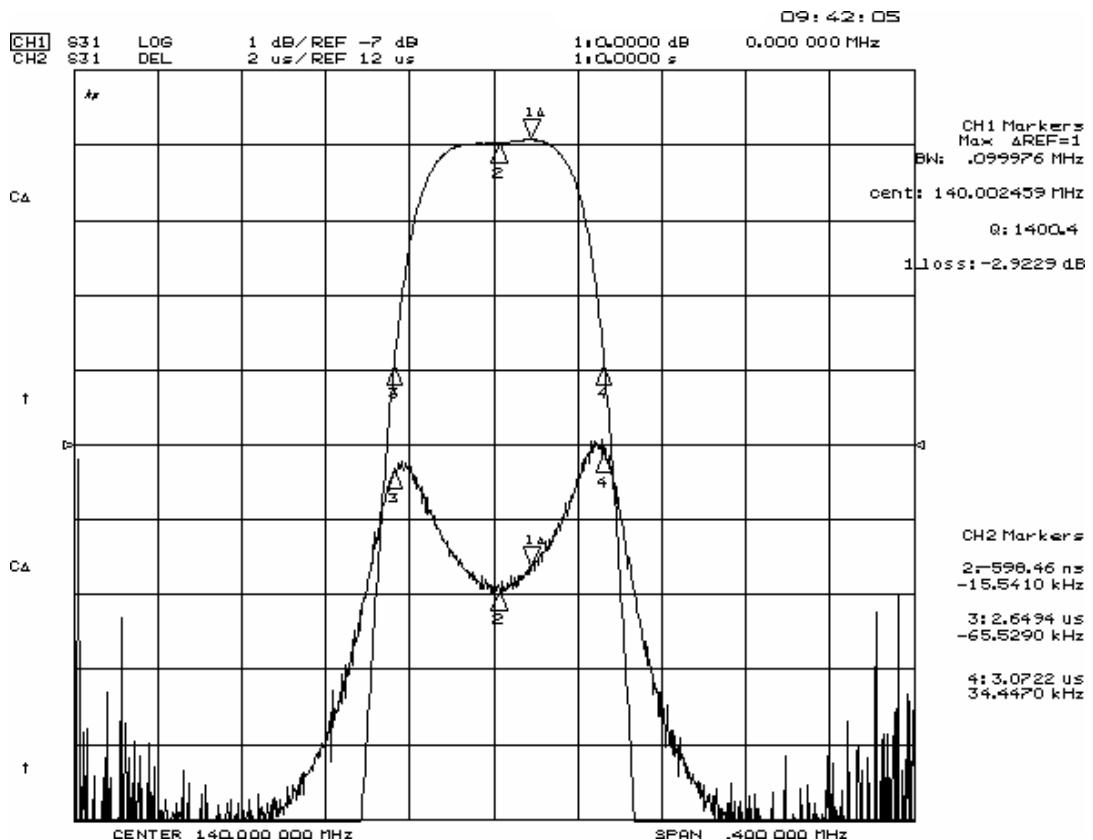
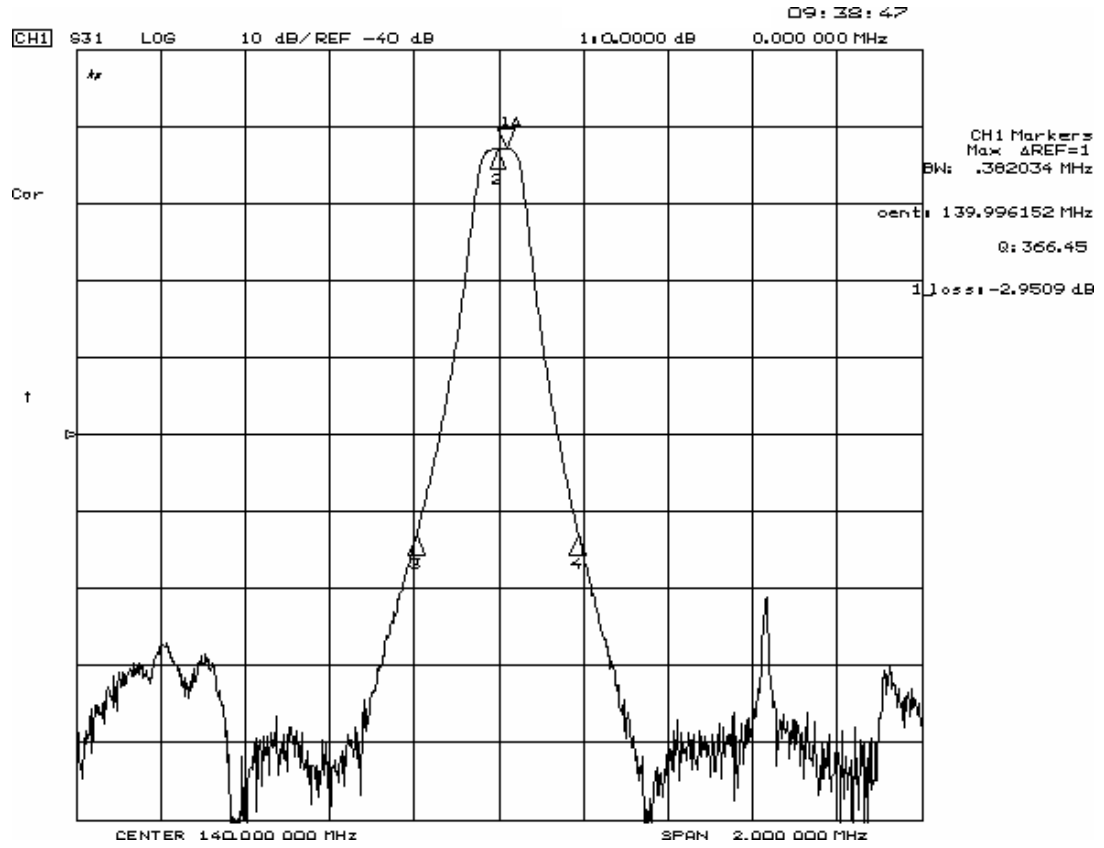
50 Ohm Test circuit (single-ended / single-ended)



140.0MHz SAW Filter
Part No: MA06078

Model: TB0217A
REV NO.: 2

E. FREQUENCY CHARACTERISTICS:

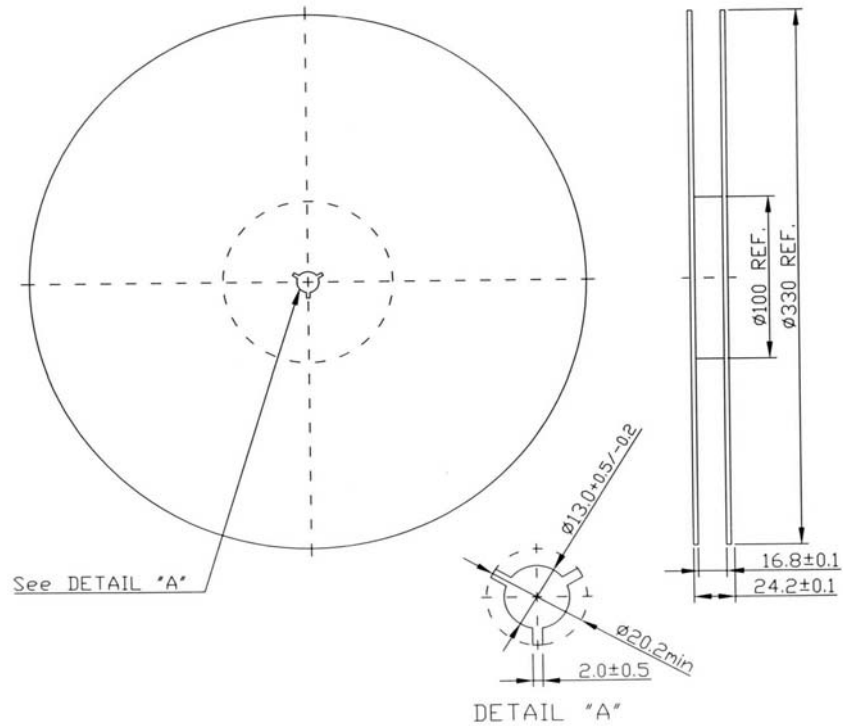


140.0MHz SAW Filter
Part No: MA06078

Model: TB0217A
REV NO.: 2

F. PACKING:

1. REEL DIMENSION



2. TAPE DIMENSION

