

418.0 MHz SAW Resonator

Model: TC0117A

Part No: MA05649

REV NO.: 1

A. FEATURES:

1. 1-Port Resonator.

B. MAXIMUM RATING:

1. Input Power Level: 0 dBm
2. DC voltage: 12 V
3. Operating Temperature: -40°C to +85°C
4. Storage Temperature: -40°C to +85°C

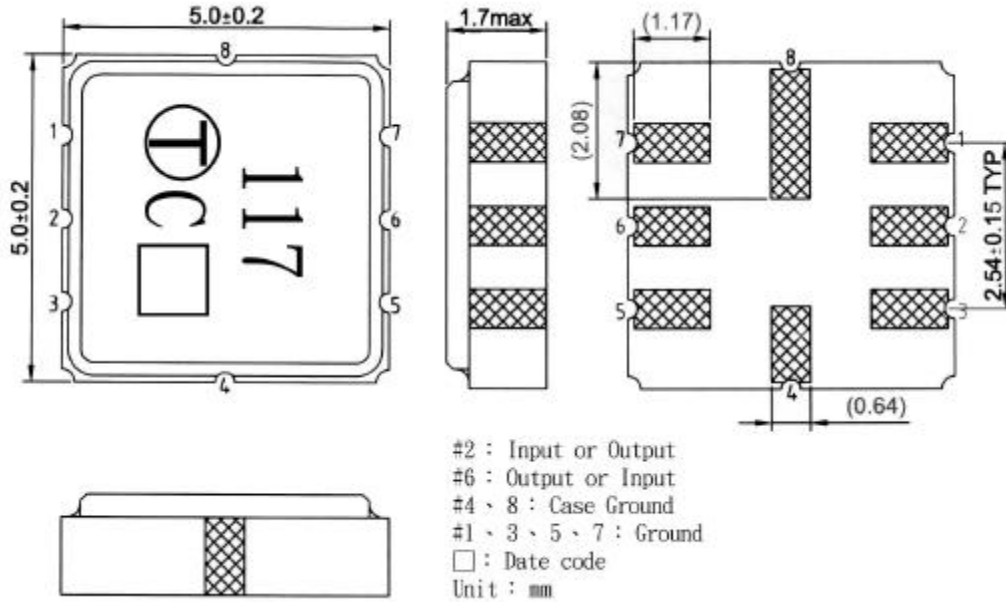
C. ELECTRICAL CHARACTERISTICS:

Characteristic	Units	Minimum	Typical	Maximum
Center frequency Fr	MHz	417.925	418	418.075
Insertion Loss IL	dB		0.9	2.0
Equivalent Elements				
Motional capacitance C1	fF	-	2.19	-
Motional inductance L1	μH	-	66.11	-
Motional resistance R1	Ohm	-	12.68	-
Parallel capacitance Co	pF	-	3.65	-
Temp.coeff.	ppm/c*2	-	0.032	-
Turnover To	deg.C	20	-	50
Package size		SMD 5X5X1.4mm		

418.0 MHz SAW Resonator
Part No: MA05649

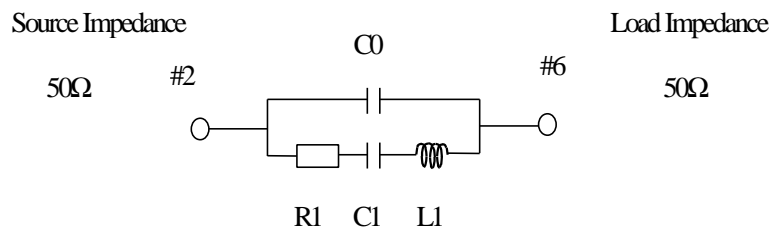
Model: TC0117A
REV NO.: 1

D. OUTLINE DRAWING:



E. EQUIVALENT CIRCUIT:

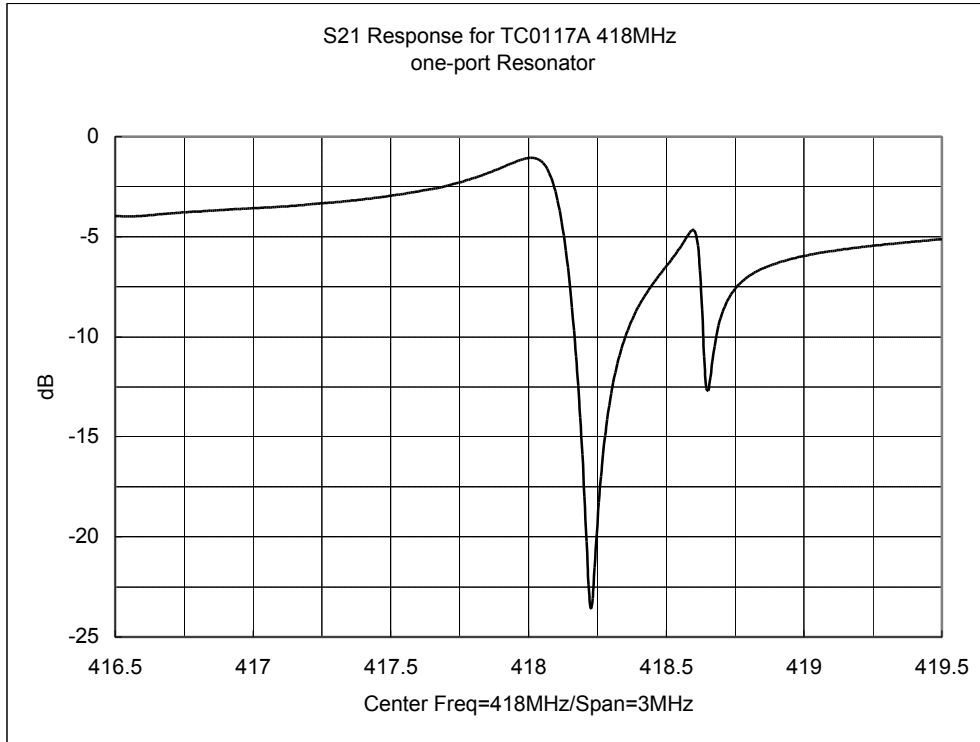
One-Port Resonator:



418.0 MHz SAW Resonator
Part No: MA05649

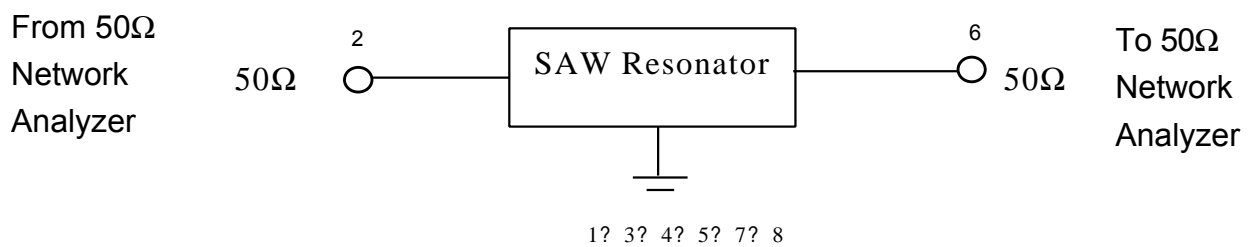
Model: TC0117A
REV NO.: 1

F. FREQUENCY CHARACTERISTICS:



G. TEST CIRCUIT:

Network analyzer

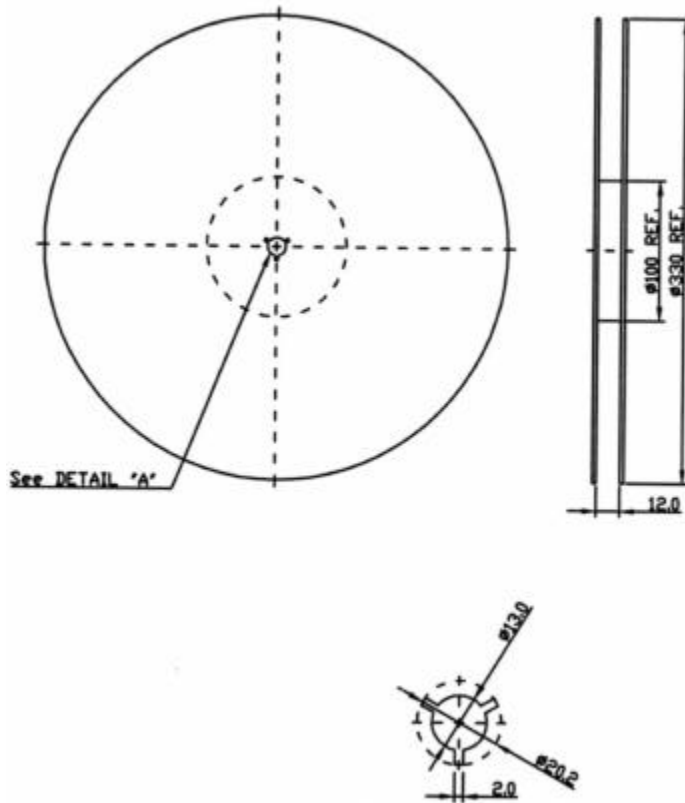


418.0 MHz SAW Resonator
Part No: MA05649

Model: TC0117A
REV NO.: 1

H. PACKING:

1. REEL DIMENSION



2. TAPE DIMENSION

