

SAW Filter 433.42MHz
Part No: MA05604

Model: TA0293A
Rev No: 2

A. MAXIMUM RATING:

1. Input Power Level: 10dBm
2. DC voltage: 0V
3. Operating Temperature: -40°C to +85°C
4. Storage Temperature: -40°C to +85°C

B. ELECTRICAL CHARACTERISTICS:

Reference temperature: TA = -40 to 85°C

Item	Min.	Typ.	Max.	Note
Center frequency Fc (MHz)	-	433.42	-	1
Minimum IL (433.3 ~ 433.62MHz) (dB) IL min	-	2.2	4.0	
Pass band (relative to IL min)				
433.26 ~ 433.58MHz (dB)	-	-	2.0	1
433.24 ~ 433.60MHz (dB)	-	-	3.0	
433.18 ~ 433.66MHz (dB)	-	-	6.0	
Pass bandwidth (relative to IL min) BW3 (kHz)	-	700	-	
Attenuation (relative to IL min) (dB)				
10 ~ 413.5MHz (dB)	45	48	-	1
413.5 ~ 427MHz (dB)	40	43	-	
427 ~ 432.34MHz (dB)	20	25	-	
434.42 ~ 441.5MHz (dB)	10	15	-	
441.5 ~ 549.5MHz (dB)	33	38	-	
549.5 ~ 1000MHz (dB)	45	50	-	
Impedance at Fc; Input Z _{IN} = R _{IN} // C _{IN} Output Z _{OUT} = R _{OUT} // C _{OUT}	227Ω // 3.3pF 227Ω // 3.3pF			
Turnover To (deg. C)	25 typ.			

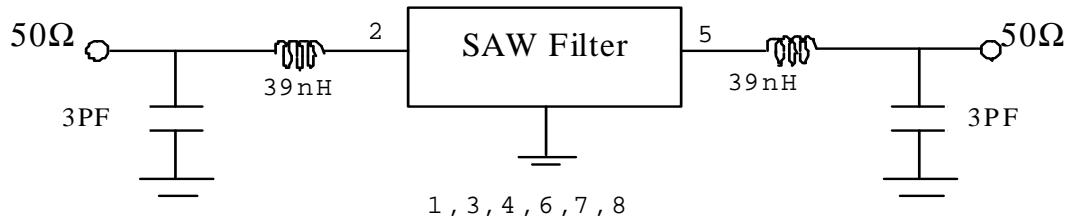
Note 1: The standard definitions is in JIS C 6703

SAW Filter 433.42MHz
Part No: MA05604

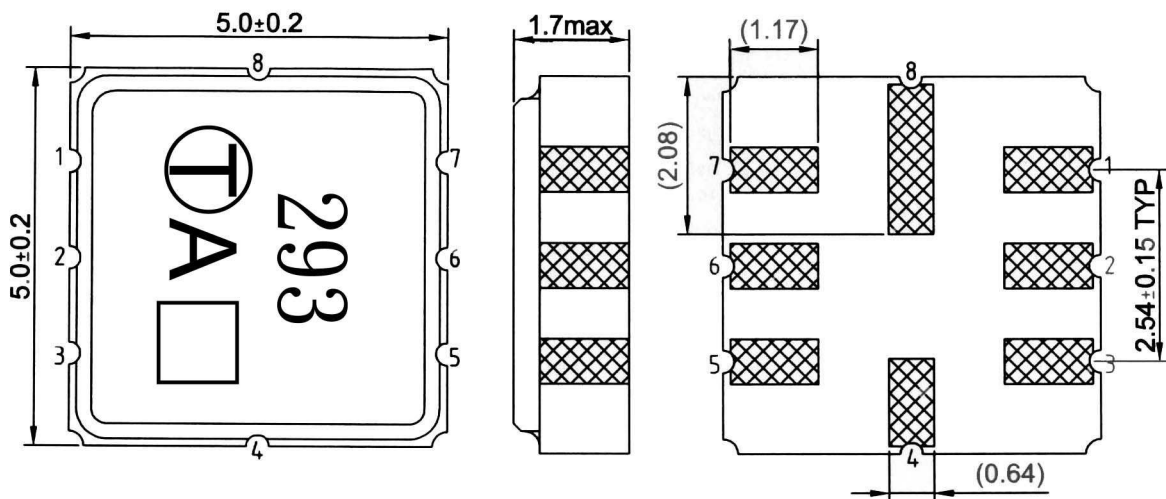
Model: TA0293A
Rev No: 2

C. MEASUREMENT CIRCUIT:

HP Network analyzer



D. OUTLINE DRAWING:

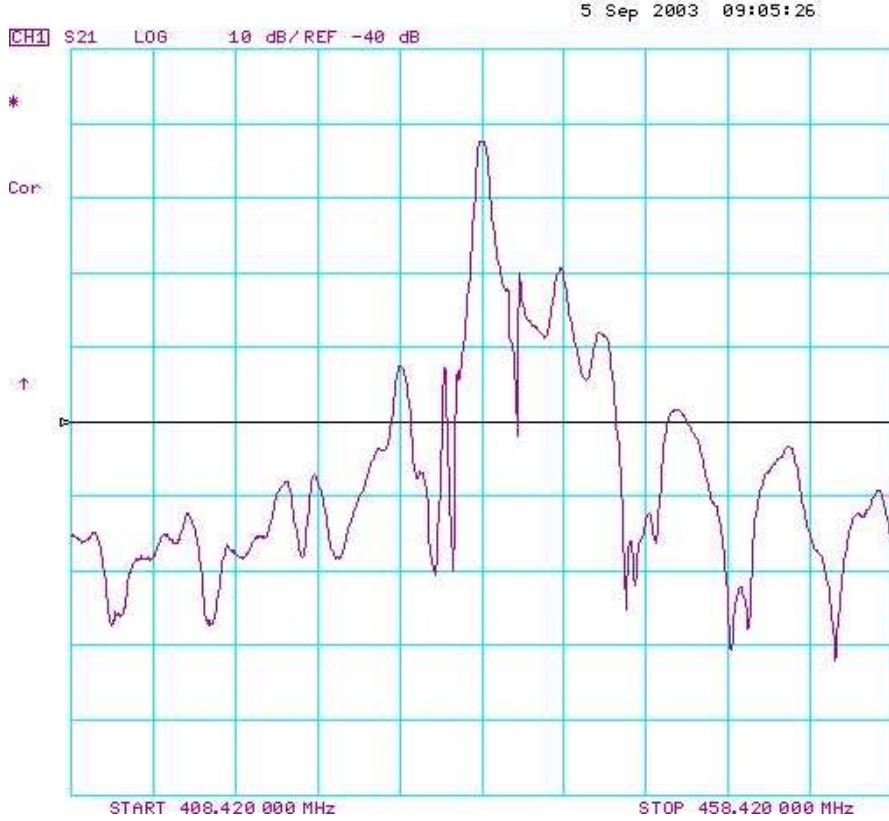


- #2 : Input
- #5 : Output
- #4、8 : Case Ground
- #1、3、6、7 : Ground
- : Date code
- Unit : mm

SAW Filter 433.42MHz
Part No: MA05604

Model: TA0293A
Rev No: 2

E. FREQUENCY CHARACTERISTICS:

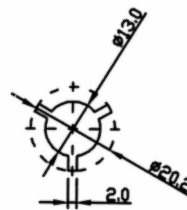
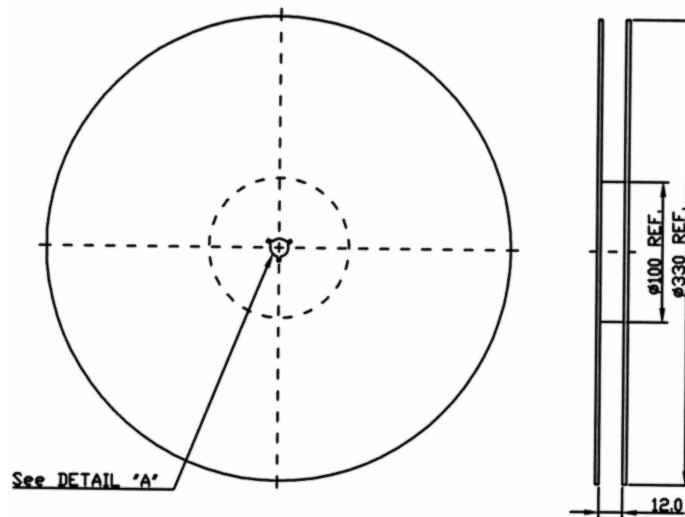


SAW Filter 433.42MHz
Part No: MA05604

Model: TA0293A
Rev No: 2

F. PACKING:

1. REEL DIMENSION



2. TAPE DIMENSION

