

433.920 MHz SAW Resonator
Part No: **MA05557**

Model: TC0201A
REV NO.: 1

A. FEATURES:

1. 1-Port Resonator.

B. MAXIMUM RATING:

1. Input Power Level: 0 dBm
2. DC voltage: 12 V
3. Operating Temperature: -40°C to +85°C
4. Storage Temperature: -40°C to +85°C

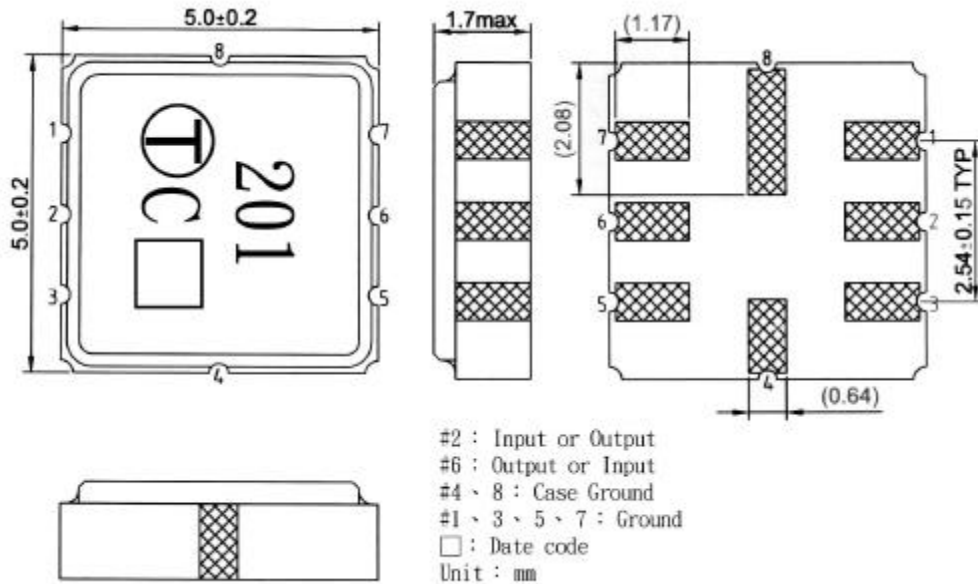
C. ELECTRICAL CHARACTERISTICS:

Characteristic	Units	Minimum	Typical	Maximum
Center frequency Fr	MHz	433.845	433.92	433.995
Insertion Loss IL	dB	-	1.0	2.0
Equivalent Elements				
Motional capacitance C1	fF	-	2.16	-
Motional inductance L1	μH	-	62.24	-
Motional resistance R1	Ohm	-	13.60	-
Parallel capacitance Co	pF	-	3.61	-
Temp.coeff.	ppm/c*2	-	0.032	-
Turnover To	deg.C	10	25	40
Package size		SMD 5X5X1.4mm		

433.920 MHz SAW Resonator
Part No: MA05557

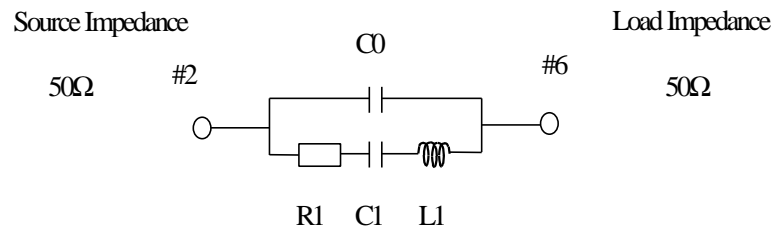
Model: TC0201A
REV NO.: 1

D. OUTLINE DRAWING:



E. EQUIVALENT CIRCUIT:

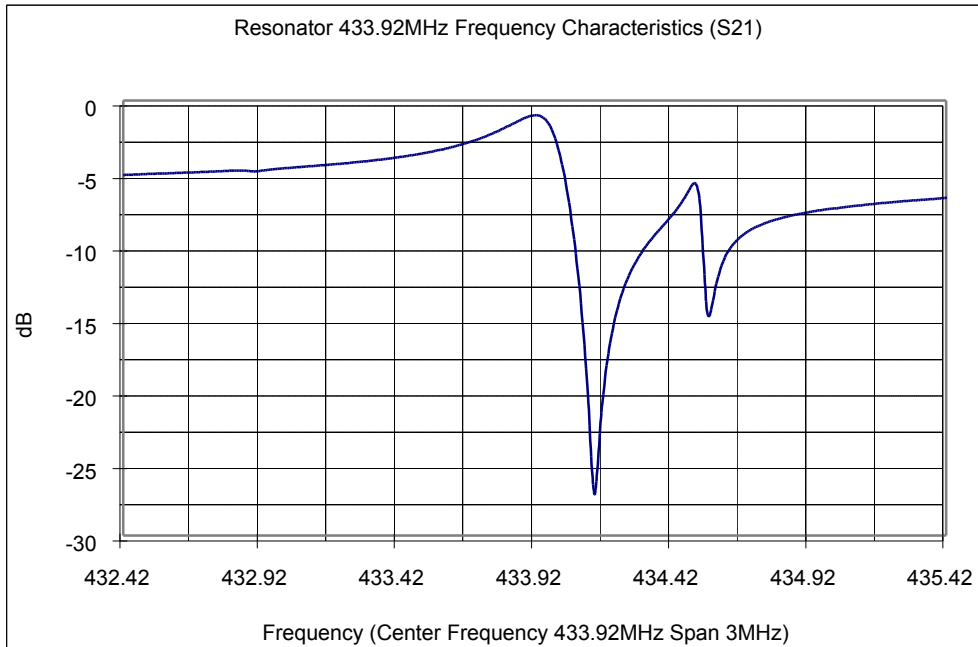
One-Port Resonator:



433.920 MHz SAW Resonator
Part No: MA05557

Model: TC0201A
REV NO.: 1

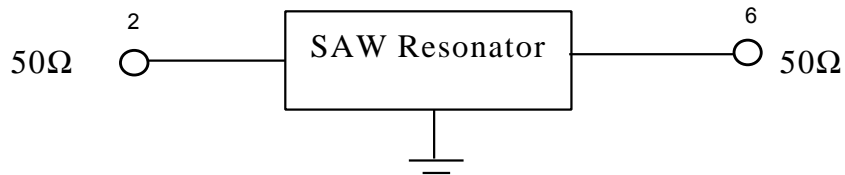
F. FREQUENCY CHARACTERISTICS:



G. TEST CIRCUIT:

Network analyzer

From 50Ω
Network
Analyzer



To 50Ω
Network
Analyzer

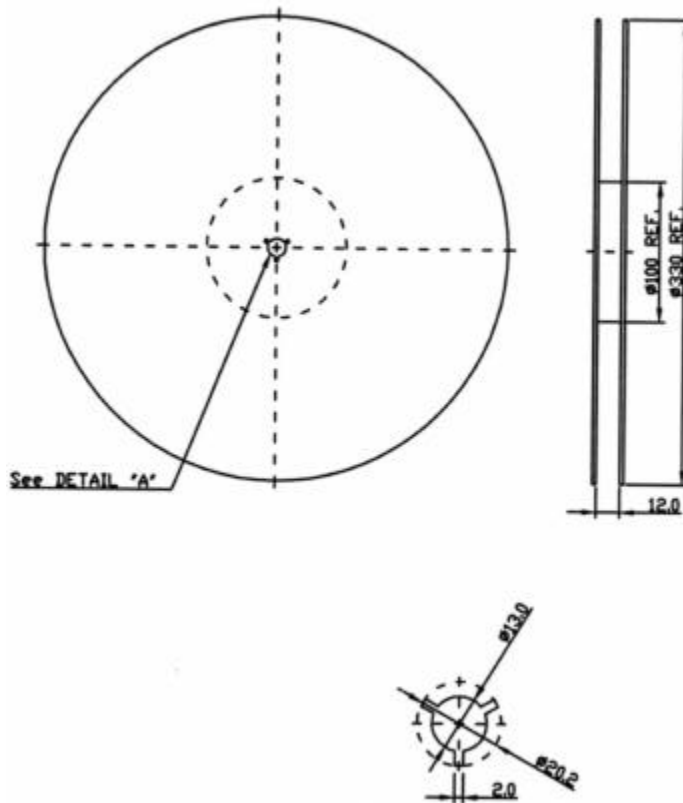
1? 3? 4? 5? 7? 8

433.920 MHz SAW Resonator
Part No: **MA05557**

Model: TC0201A
REV NO.: 1

H. PACKING:

1. REEL DIMENSION



2. TAPE DIMENSION

