
433.920MHz SAW Resonator**Model: TD0102A****Part No: MA04206****REV NO.: 3**

A. FEATURES:

1. 2-Port Resonator.

B. MAXIMUM RATING:

1. Input Power Level: 0 dBm
2. DC voltage: 12 V
3. Operating Temperature: -40°C to +85°C
4. Storage Temperature: -40°C to +85°C

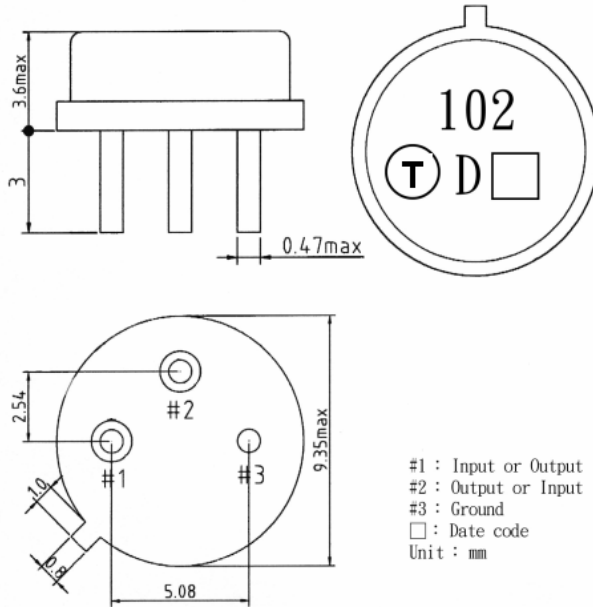
C. ELECTRICAL CHARACTERISTICS:

Characteristic	Units	Minimum	Typical	Maximum
Center frequency Fr	MHz	433.845	433.920	433.995
Insertion Loss IL	dB	-	7	9
Equivalent Elements				
Motional capacitance C1	fF	-	0.15	-
Motional inductance L1	μH	-	900	-
Motional resistance R1	Ohm	-	166	217
Parallel capacitance Co	pF	2.3	2.6	2.9
Temp.coeff.	ppm/c*2	-	0.032	-
Turnover To	deg.C	36	-	66
Package size			TO39	

433.920MHz SAW Resonator
Part No: MA04206

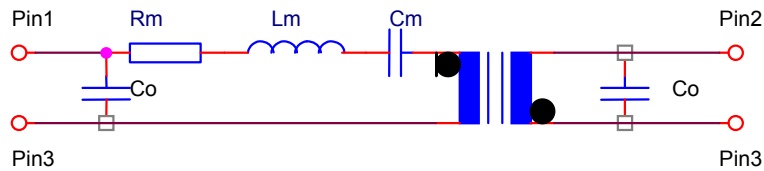
Model: TD0102A
REV NO.: 3

D. OUTLINE DRAWING:



E. EQUIVALENT CIRCUIT:

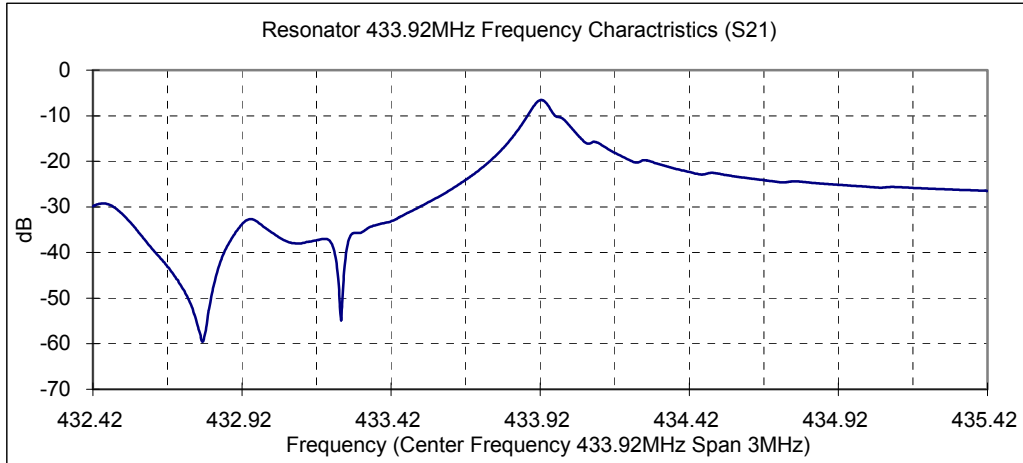
Two-Port Resonator:



433.920MHz SAW Resonator
Part No: MA04206

Model: TD0102A
REV NO.: 3

F. FREQUENCY CHARACTERISTICS:



G. TEST CIRCUIT:

