

SAW Filter 171MHz
Part No: MA03735

Model: TA171E1
Rev No:2

A. MAXIMUM RATING:

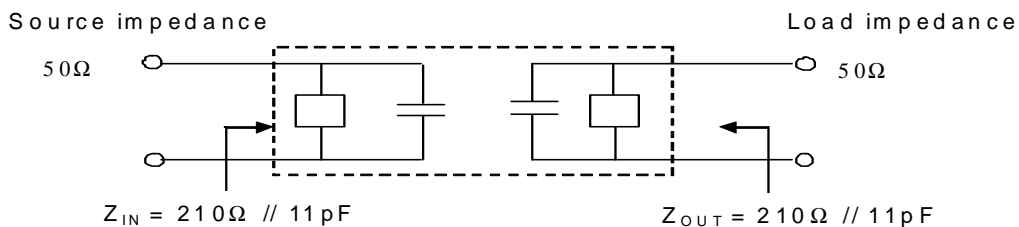
1. Input Power Level: 0dBm
2. DC voltage: 10V
3. Operating Temperature: -10°C to +50°C
4. Storage Temperature: -40°C to +85°C

B. ELECTRICAL CHARACTERISTICS:

Characteristics	Units	Min.	Typ.	Max.
Center frequency Fc (MHz)	MHz		171	
IL (Fc ± 4MHz) (dB)	dB			6.5
Attenuation: (Reference level from 0dB)				
Fc -100MHz to -38.8MHz (dB)	dB	50		
Fc +38.8MHz to +100MHz (dB)	dB	42		
Impedance at Fc:				
Input			210 Ω // 11 pF	
Output			210 Ω // 11 pF	

Note1. The standard definitions is in JIS C 6703

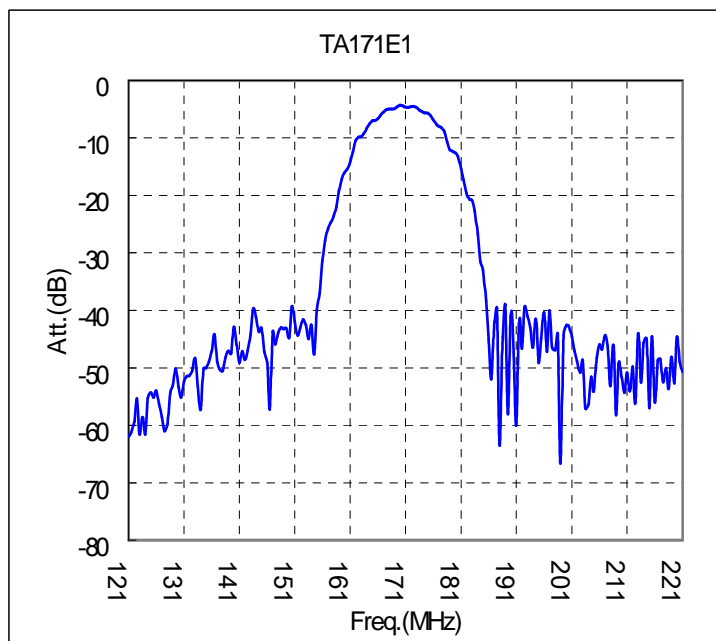
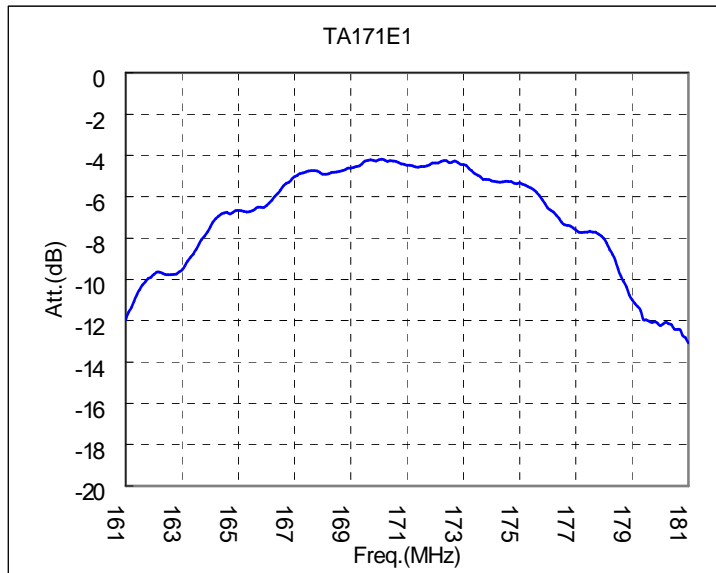
Note2.



SAW Filter 171MHz
Part No: MA03735

Model: TA171E1
Rev No:2

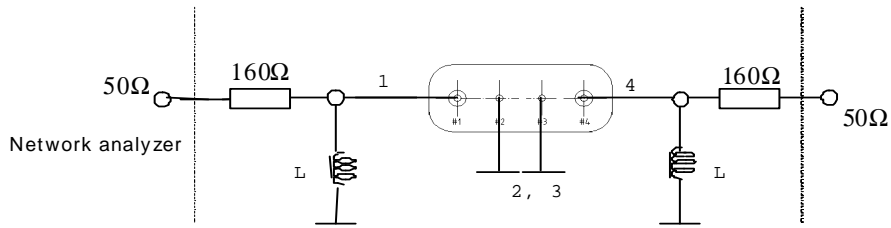
C. FREQUENCY CHARACTERISTICS:



SAW Filter 171MHz
Part No: MA03735

Model: TA171E1
Rev No:2

D. MEASUREMENT CIRCUIT:



0dB Level



E. OUTLINE DRAWING:

