

Features

- ▄▄▄▄ 4 poles in one package
- ▄▄▄▄ Frequencies 21.4MHz ~ 55.0MHz available
- ▄▄▄▄ Custom specifications available
- ▄▄▄▄ Miniature SM package

Ordering Information

Product name + model number

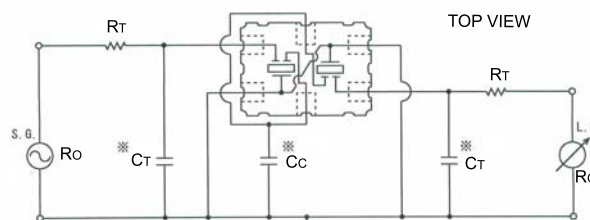
eg: **GSF-75 45R15B1**

GSF-75 45R30B

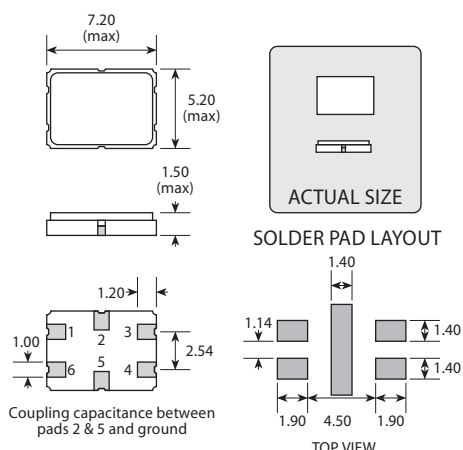
Option code X (eg GSF-75/X) denotes a custom spec.

- ◆ Available on T&R - 1k pcs per reel.
- ◆ Refer to our website for T&R and soldering details.

Test Circuit



Z_T: Terminating impedance (R_T + R_O) // C_T
 * Including strays



PAD	CONNECTION
1	Ground
2	Connect with pad 5 & C _c
3	In / Out
4	Ground
5	Connect with pad 2 & C _c
6	Out / In

Scale 2:1

Standard Specifications

Model Number	Centre Frequency (MHz)	Number of Poles	Pass Band (dB @ kHz)	Attenuation Band (dB @ kHz)	In-Band Ripple (dB)	Insertion Loss (dB)	Guaranteed Attenuation (dB @ kHz)	Termination (Ω // pF) R _T +R _O //C _T	Operating Temperature Range (°C)	No of Units
21R7B	21.400	4	3 ±3.75	35 ±16.0	1.0	4.0	80 -910 ±10	1200 // 5.0 (C _C =14.0pF)	-30 to +70	1
21R15B	21.400	4	3 ±7.5	25 ±22.0	1.0	3.0	80 -910 ±10	1900 // 1.6 (C _C =7.0pF)	-30 to +70	1
40R15B-Z	40.680	4	3 ±7.5	35 ±25.0	1.0	3.0	70 -910 ±10	1200 // 1.5 (C _C =6pF)	-20 to +70	1
45R7B1	45.000	4	3 ±3.75	30 ±12.5	1.0	4.0	80 -910 ±10	550 // 2.5 (C _C =13pF)	-20 to +70	1
45R12B	45.000	4	3 ±6.0	30 ±20.0	1.0	3.0	80 -910 ±10	950 // 1.2 (C _C =8.0pF)	-20 to +70	1
45R15B1	45.000	4	3 ±7.5	25 ±22.0	1.0	3.0	80 -910 ±10	900 // 2.0 (C _C =7.0pF)	-30 to +70	1
45R20B	45.000	4	3 ±10.0	40 ±48.0	1.0	3.0	80 -910 ±10	1000 // 1.6 (C _C =5.0pF)	-20 to +70	1
45R30B	45.000	4	3 ±15.0	35 ±50.0	1.0	4.0	80 -910 ±10	1500 // 0.7 (C _C =3.0pF)	-20 to +70	1
50R9B	50.000	4	3 ±4.5	13 ±12.5	1.5	6.0	70 -5000	450 // 3.5 (C _C =14.0pF)	-20 to +75	1